



Role of Stewardship Contracts in Communities

SUCCESSES AND CHALLENGES
OF PROJECTS IN THE
GREAT BURN PROPOSED WILDERNESS

Peter Bugoni, Ed.
Independent Consultant

Share in the
chat box:



An example where you have thought “outside the box”
in terms of public engagement in your agency.



The saying goes...

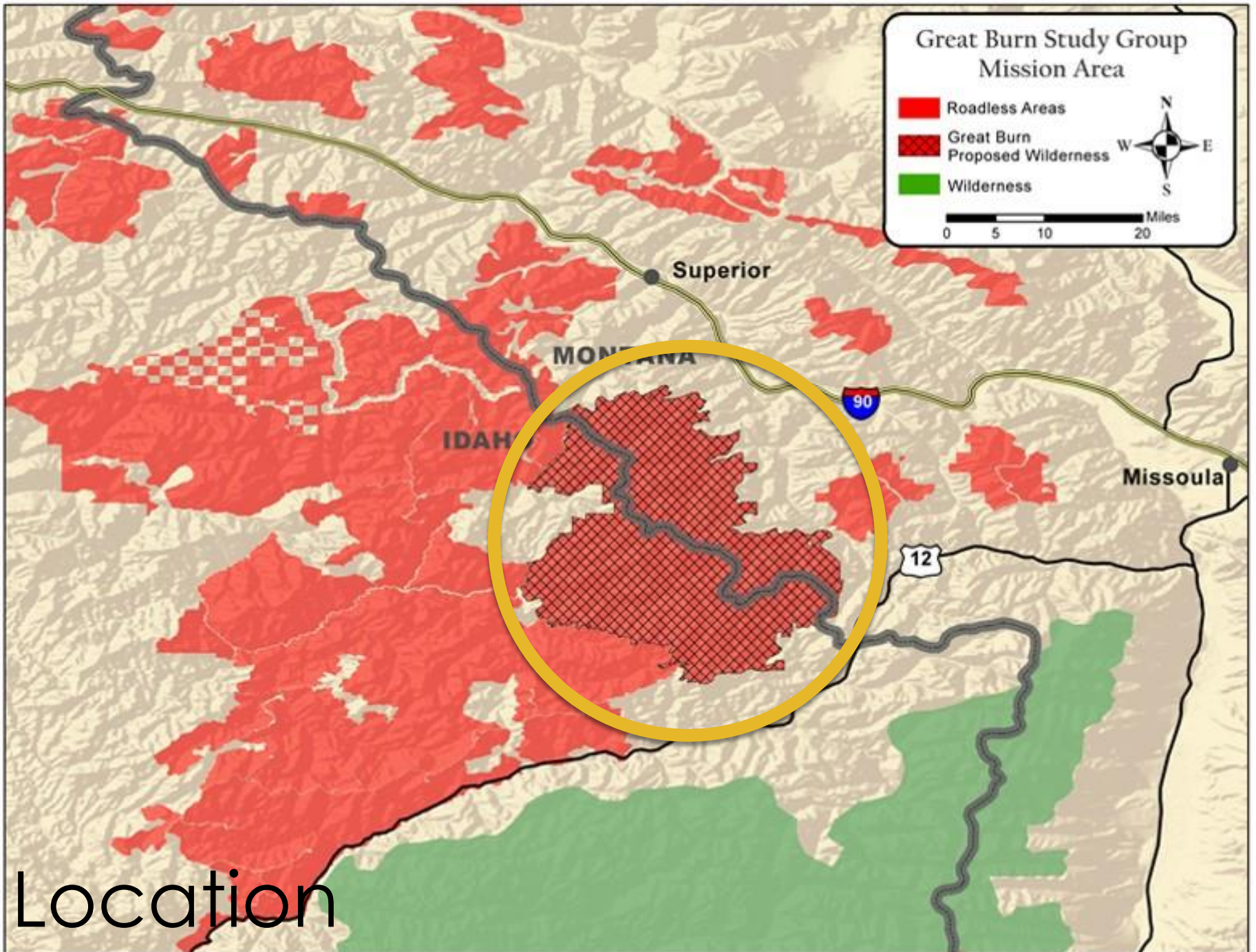
“When you’ve seen one collaborative,
you’ve seen ... one collaborative.”

— Dan Clark, MSU Local Government Center



Outline

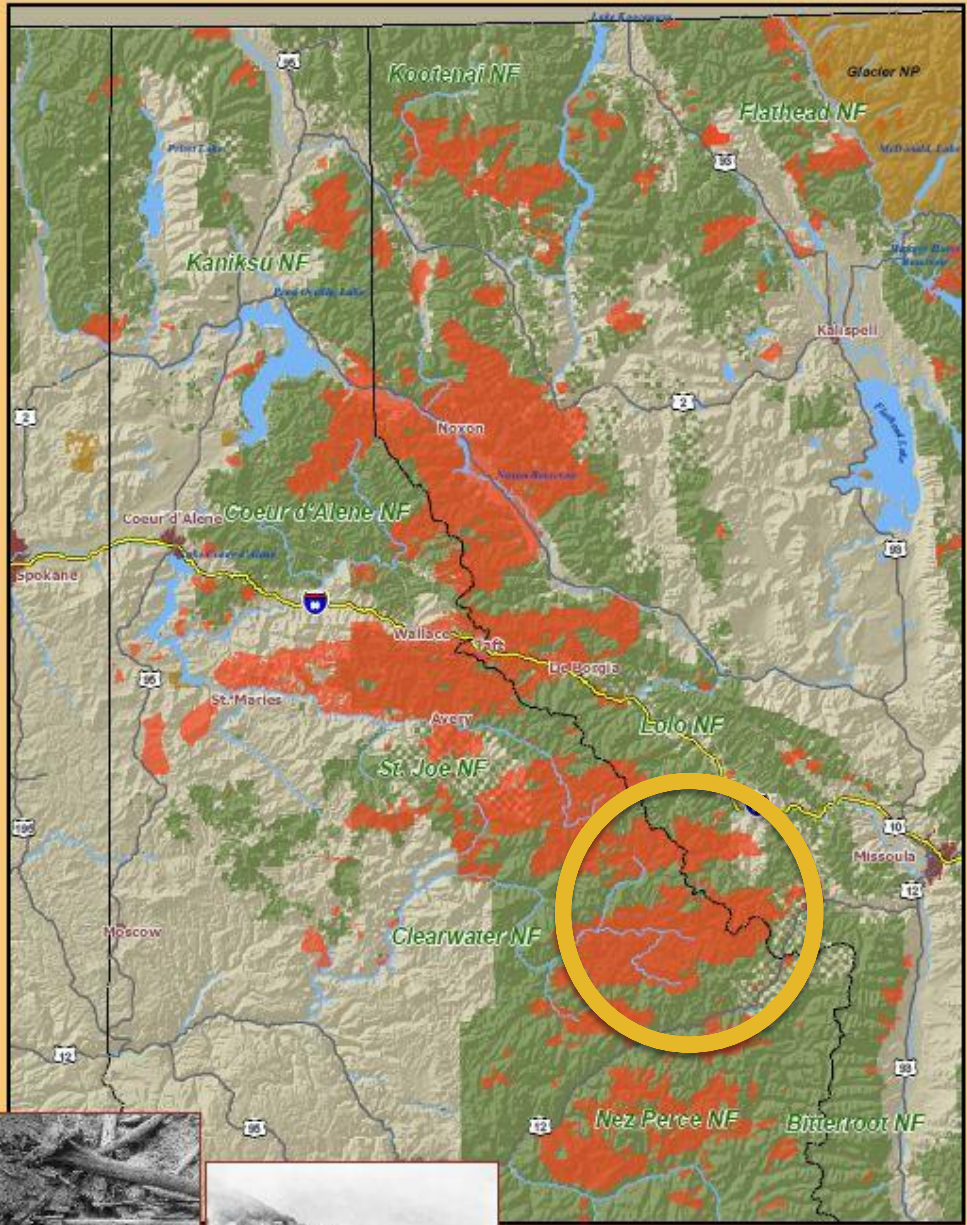
- ▶ Brief history of the Great Burn
- ▶ Partnerships and collaborations formed
- ▶ Highlighted projects
- ▶ Successes
- ▶ Challenges
- ▶ Essential Questions



History of the Great Burn

- ▶ Influenced by the “Big Blowup” of 1910





The Great 1910 Fire of Idaho & Montana



A horizontal wilderness



A horizontal wilderness



Complex Management

- ▶ Two states
- ▶ Three National Forests
- ▶ Numerous Stakeholders



Collaborative Forest Landscape Restoration Program (CFLRP)



Encourage the collaborative, science-based ecosystem restoration of priority forest landscapes.

- ▶ leverage local resources with national and private resources
- ▶ ecological restoration techniques achieve ecological and watershed health objectives

CFLRP Funding

- ▶ Requests by the Secretary of up to \$40,000,000 annually for fiscal years 2009 through 2019
- ▶ Up to \$4 million annually for any one project
- ▶ Up to two projects per year in any one FS region



CFLRP Example Projects



- ▶ The Selway-Middle Fork Clearwater Project: Idaho – \$3.5 million

- ▶ Southwestern Crown of the Continent Restoration Initiative: Montana – \$3.5 million



A Brief Pause

A close-up photograph of a black microphone on a stage. The microphone is the central focus, with its mesh grille clearly visible. The background is dark with several out-of-focus, colorful lights in shades of yellow, red, blue, and green, creating a bokeh effect. The lighting is dramatic, highlighting the microphone against the dark background.

- ▶ Who has participated in CFLRP?
- ▶ What is a success or a challenge you have encountered?

Contracts and Stakeholders

Noxious Weed Mitigation- Kelly Creek

- ▶ Nez-Clear National Forests
- ▶ Nez Perce Tribe
- ▶ State of Idaho
- ▶ Great Burn Study Group
- ▶ Twin Rivers and Palouse Backcountry Horsemen
- ▶ Clearwater Basin Youth Conservation Corp

WANTED: HARD WORKING YOUTH

The Department of Labor, Idaho Department of Labor, is seeking hardworking youth workers for a conservation project in the Clearwater Basin. Youth workers will be working on trail maintenance, weed treatment, and planting. The project is located in the Clearwater Basin, near the Nez Perce National Forest. For more information, visit www.idolabor.com.

Work includes:

- Trail Maintenance
- Weed Treatment
- Planting, Weeding, and Water Quality
- Planting, Weeding, and Water Quality
- Planting, Weeding, and Water Quality

Learning includes:

- Forestry
- Wildlife Habitat
- Water Quality
- Wildlife
- Forest Restoration
- Natural Resources

APPLY TODAY!
Deadline is April 29, 2016

Go To:
Your Local Idaho Department of Labor Office

Our Mission













Fisher DNA Study

- ▶ Fisher were essentially trapped out of the US.
- ▶ Between 1950-1991, fishers were reintroduced.
- ▶ 12 translocations from BC occurred in MT and ID, 3-4 of those in the Great Burn.



Fisher DNA Study

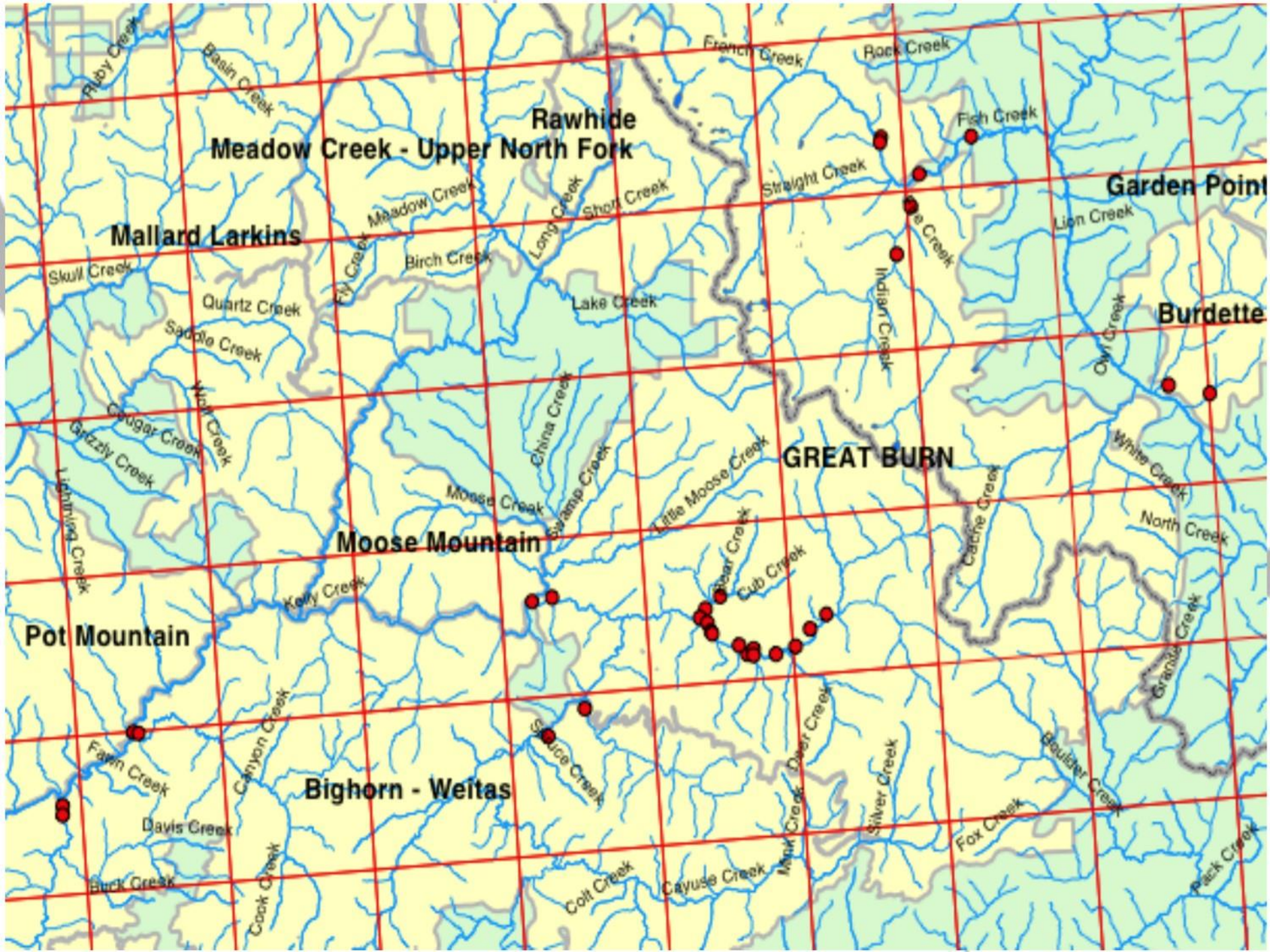
In 2003 Wildlife Biologists from U of M began studying Great Burn fisher populations and concluded not all fishers in the area were reintroduced

- ▶ This was a significant finding since native remnant populations are rare.
- ▶ Nez Perce, Lolo, Clearwater NF, GBSG, Rocky Mountain Research Station, Clearwater Basin Collaborative









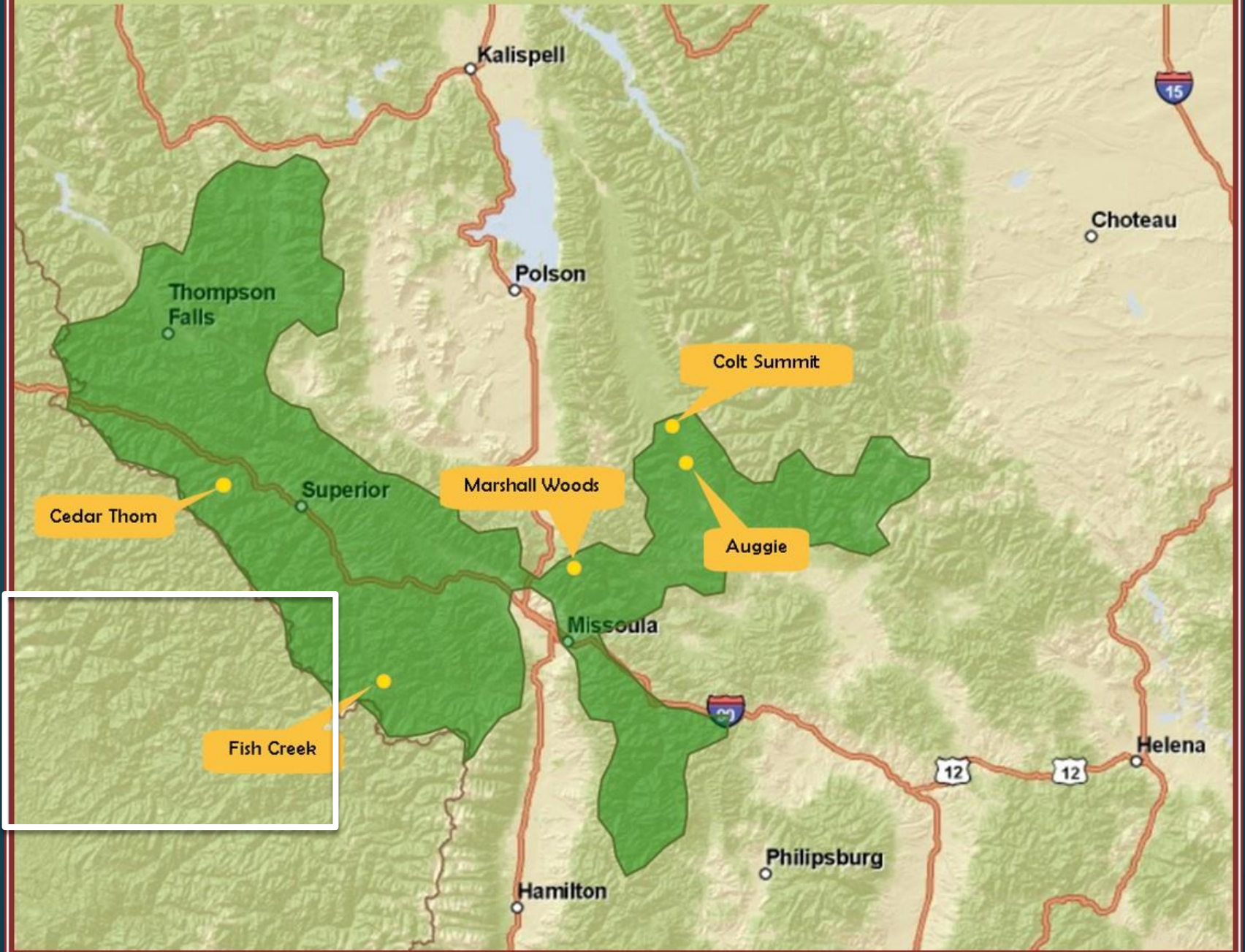
South Fork of Fish Creek Project

- ▶ A Stewardship Project including harvesting of commercial saw timber and pre-commercial thinning on approximately 675 acres, road maintenance and decommissioning, recreational trailhead improvements, and stream habitat restoration.
- ▶ Project objectives: improving forest health, reducing hazardous fuels near rural homes, improving fish and wildlife connectivity, maintaining water quality, and recreation access.

South Fork of Fish Creek Project

- ▶ This was the first Integrated Resource Service Contract the Lolo NF undertook.
- ▶ Guiding committee consisted of:
 - ▶ Lolo NF, Wilderness Society, Nature Conservancy, U of M, GBSG, Pyramid Lumber, Montana State DNRC, Wildwest Institute, private homeowners

Restoration Projects Across the Lolo National Forest









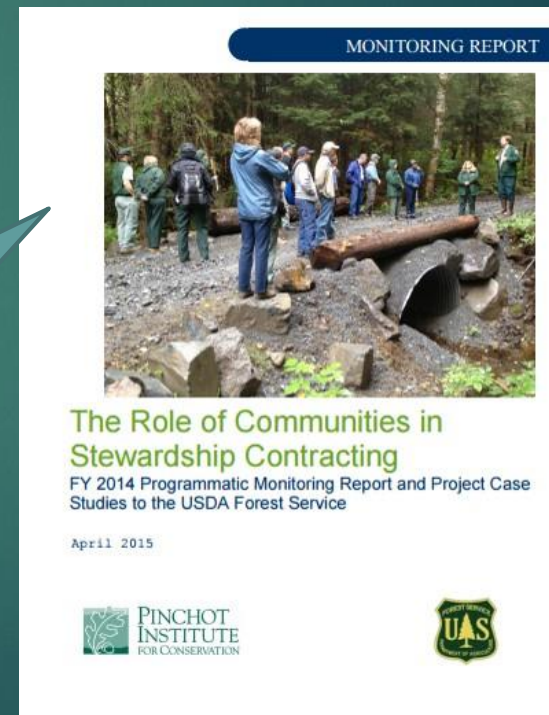
Successes

- ▶ Across the two CFLRP Programs
 - ▶ Weed Management
 - ▶ 399 Biological control releases
 - ▶ ~120,000 bugs released since 2005
 - ▶ 15,757 acres chemically controlled
 - ▶ 1855 acres physically controlled
 - ▶ Established a native fisher population
 - ▶ Thinned and enhanced forest health
 - ▶ Prevented erosion through road maintenance and decommission.

Pinchot Institute for Conservation

A FY 2014 Programmatic Report cited the biggest success:

“Many members consider the relationships built through this effort as the main success.”





Challenges



- ▶ Slow Progress
- ▶ Agency turnover (lack of succession plan) presents challenge to collaboration
- ▶ Just because a collaborative group is present does not mean it works
 - ▶ Larger projects can be less effective than smaller ones
 - ▶ South Fork of Fish Creek vs. Fisher DNA Study

Challenges cont.

- ▶ Agency and non-agency people do not always see relationships and relationship changes the same way.
 - ▶ Agency people tend to be more positive about the nature of their relationships with external individuals.
 - ▶ South Fork of Fish Creek: expectations were not met, relationships soured, issues of trust arose.
- ▶ Agencies need to be flexible...you've seen one collaborative, you've seen one collaborative!

Essential Questions



- ▶ What role do stewardship contracts have in the future of your agency?
- ▶ How does your agency build on successes of past collaborative efforts?
- ▶ How does your agency avoid the pitfalls of common often shared challenges?