

# Boston Harbor Islands

---

## National Parks in the City

---

### *Partnerships and Community Engagement*

Mary Raczko

National Park Service

Boston Harbor Islands National Recreation Area

Managing by Network

September, 2012

# Boston Harbor Islands

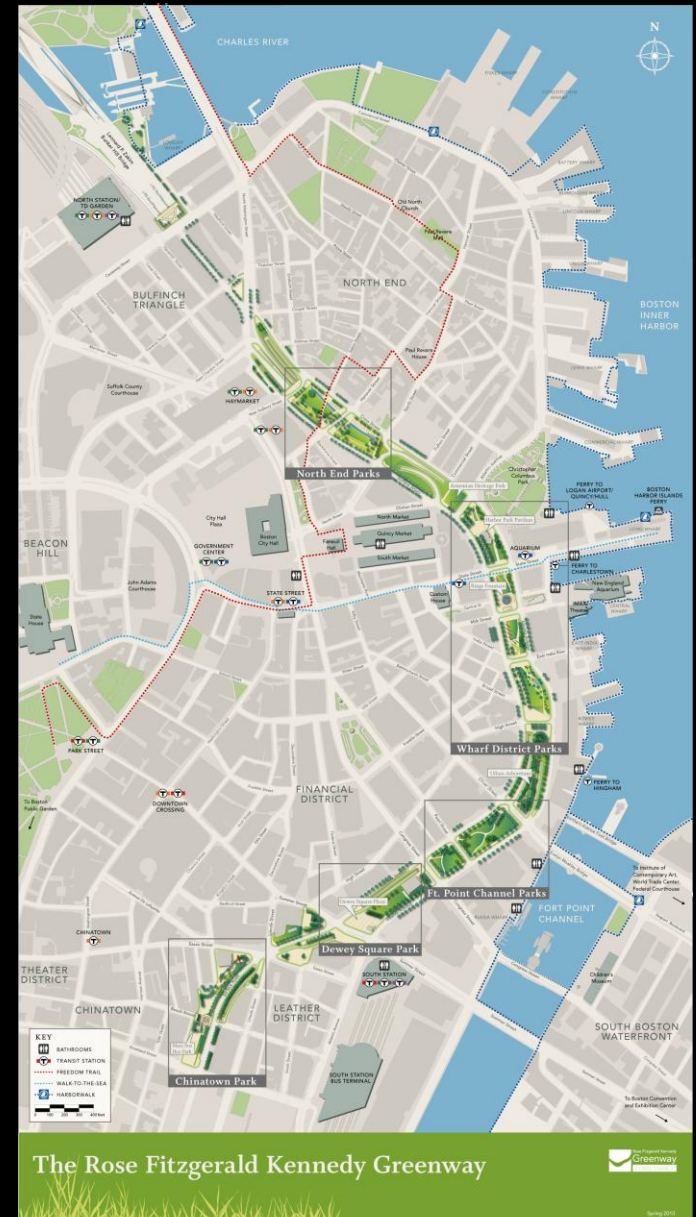
a gateway to the Great Outdoors



- 34 islands
  - 3,500 acres;  
1,600 upland
  - 1 to 240 acres
- mix of natural & cultural resources
- ferries
  - to Georges Spectacle
  - from Boston, Quincy & Hingham

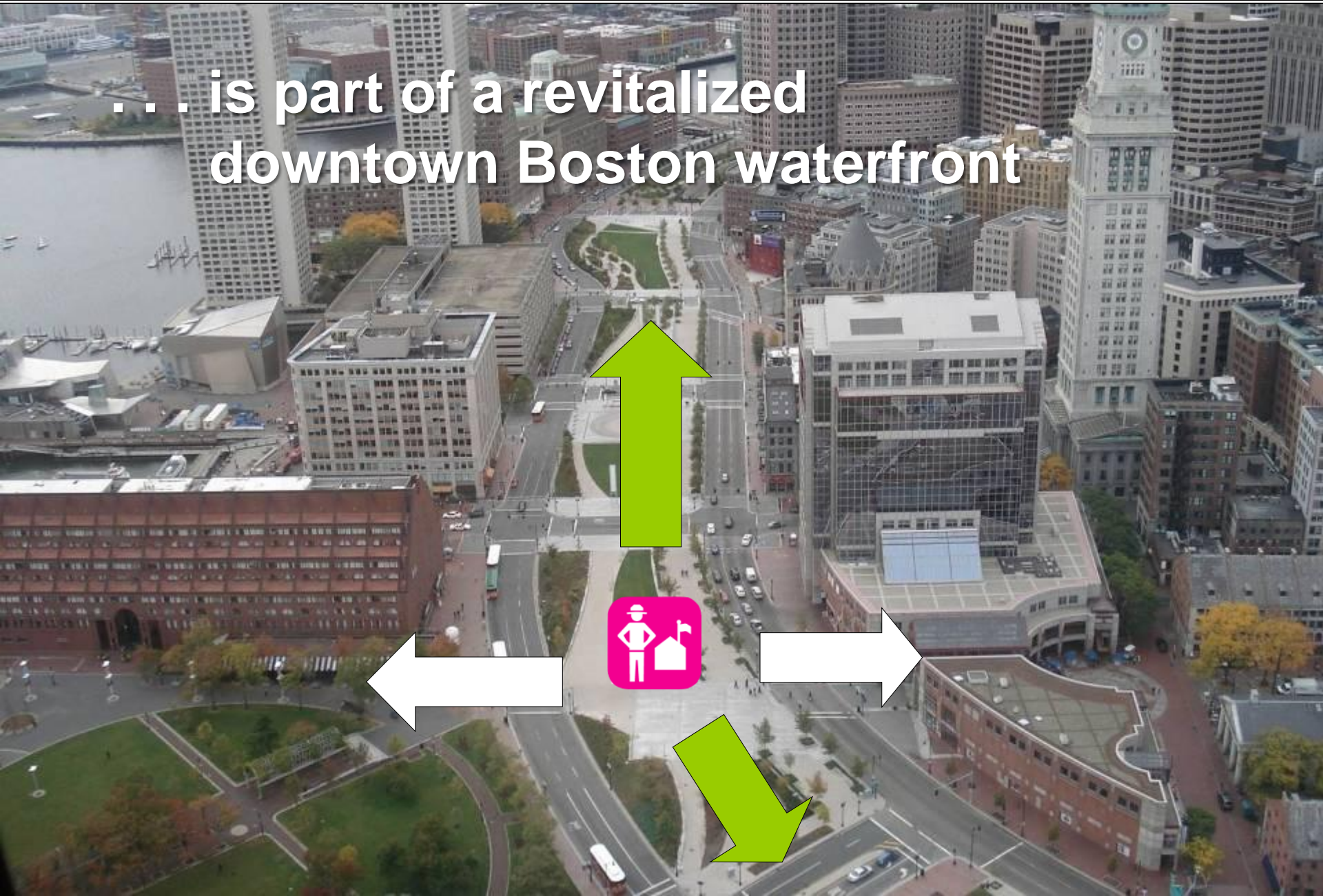
# Boston Harbor Islands

- 1940s “Highway in the Skies”
- 1959 Central Artery complete
- 1991 “Big Dig” construction begins
- 1998 NPS begins facility concept
- 2008 Greenway opens
- 2011 Boston Harbor Islands Pavilion



# Boston Harbor Islands

... is part of a revitalized  
downtown Boston waterfront

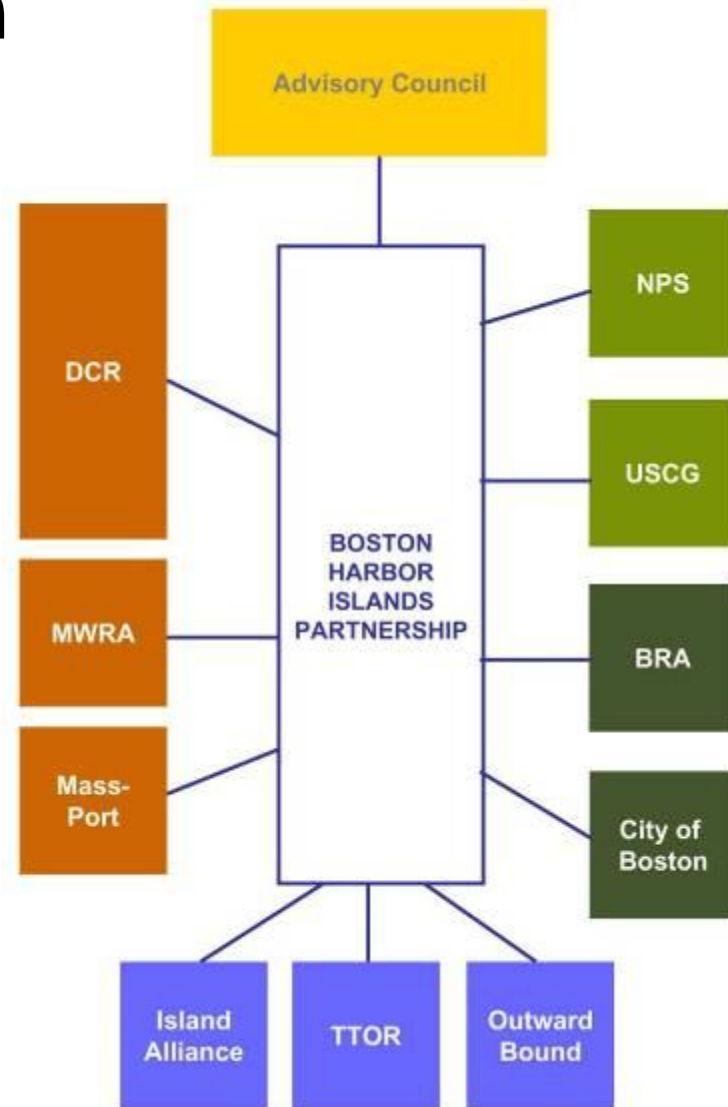


# Boston Harbor Islands

... is managed in Partnership

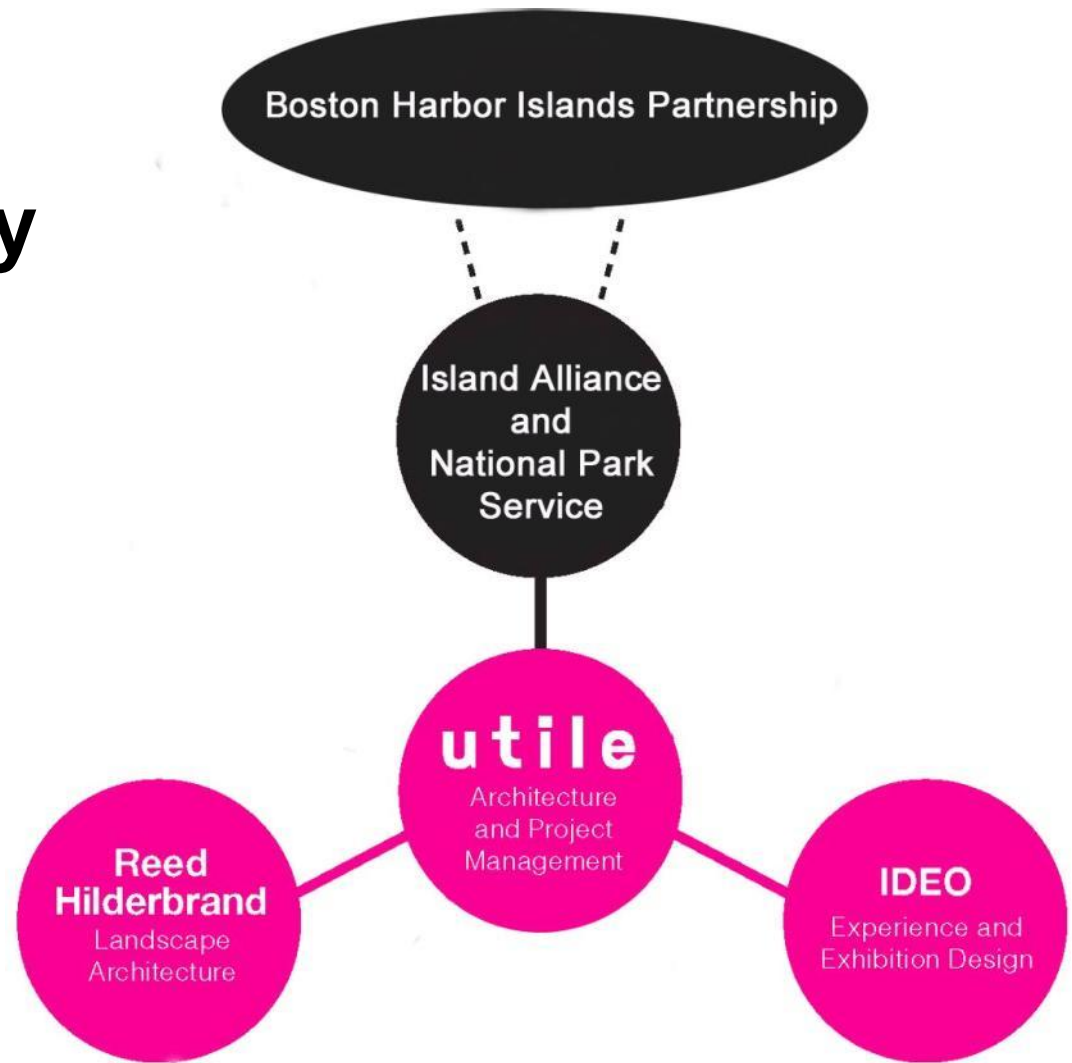
## KEY

- Federal
- State
- Municipal
- Private/Non-Profit
- Advisory Council



# Boston Harbor Islands

**interdisciplinary**



# Boston Harbor Islands

---

## community engagement . . .

- neighbors
- Boston Society of Architects
- A Better City
- Wharf District Task Force
- Friends of Christopher Columbus Park
- Armenian Heritage Foundation
- Greenway Conservancy
- Boston Parks Commission
- Mayor's Task Force
- Boston Redevelopment Authority
- Boston Civic Design Commission
- MA Turnpike Authority
- MA State Historic Preservation Officer
- US Dept. Transportation

# Boston Harbor Islands

## “2005 Concept”

- partnership management
- designer by contest
- visitor information / orientation
  - indoor interactive exhibits
  - water feature
- tickets / reservations
- public restrooms
- café
- retail (bookstore)
- outdoor gathering
- no shaded seating
- net construction = \$7.6M
- annual operating = \$612k
- utilities (HVAC, plumbing)

## “Final Design”

- partnership management
- *designer by competition*
- visitor information / orientation
  - *outdoor exhibit panels*
  - *in-paving island map*
- tickets / reservations
- *no public restrooms*
- *no café*
- retail (*sundries*)
- outdoor gathering
- *shaded area with seating*
- net construction = \$4.2M
- annual operating = \$285k
- *demonstrate sustainability*
- *integrate into existing parks*



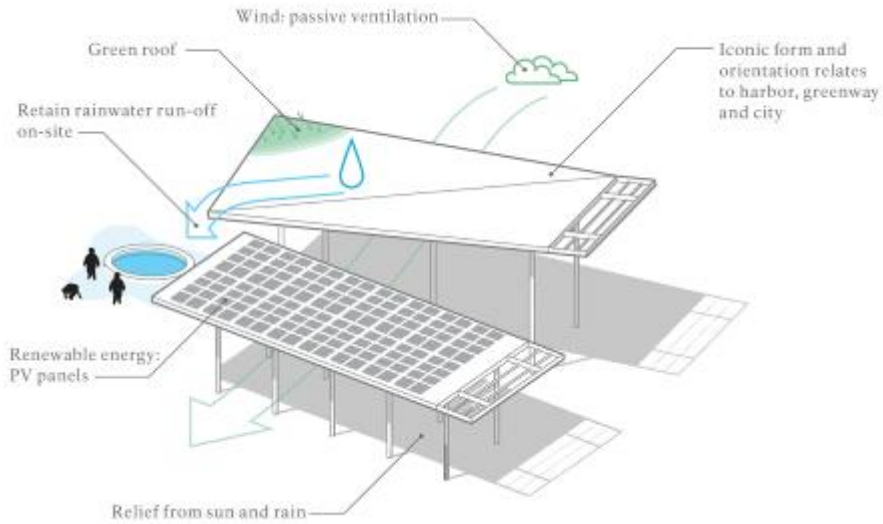
# Boston Harbor Islands

---

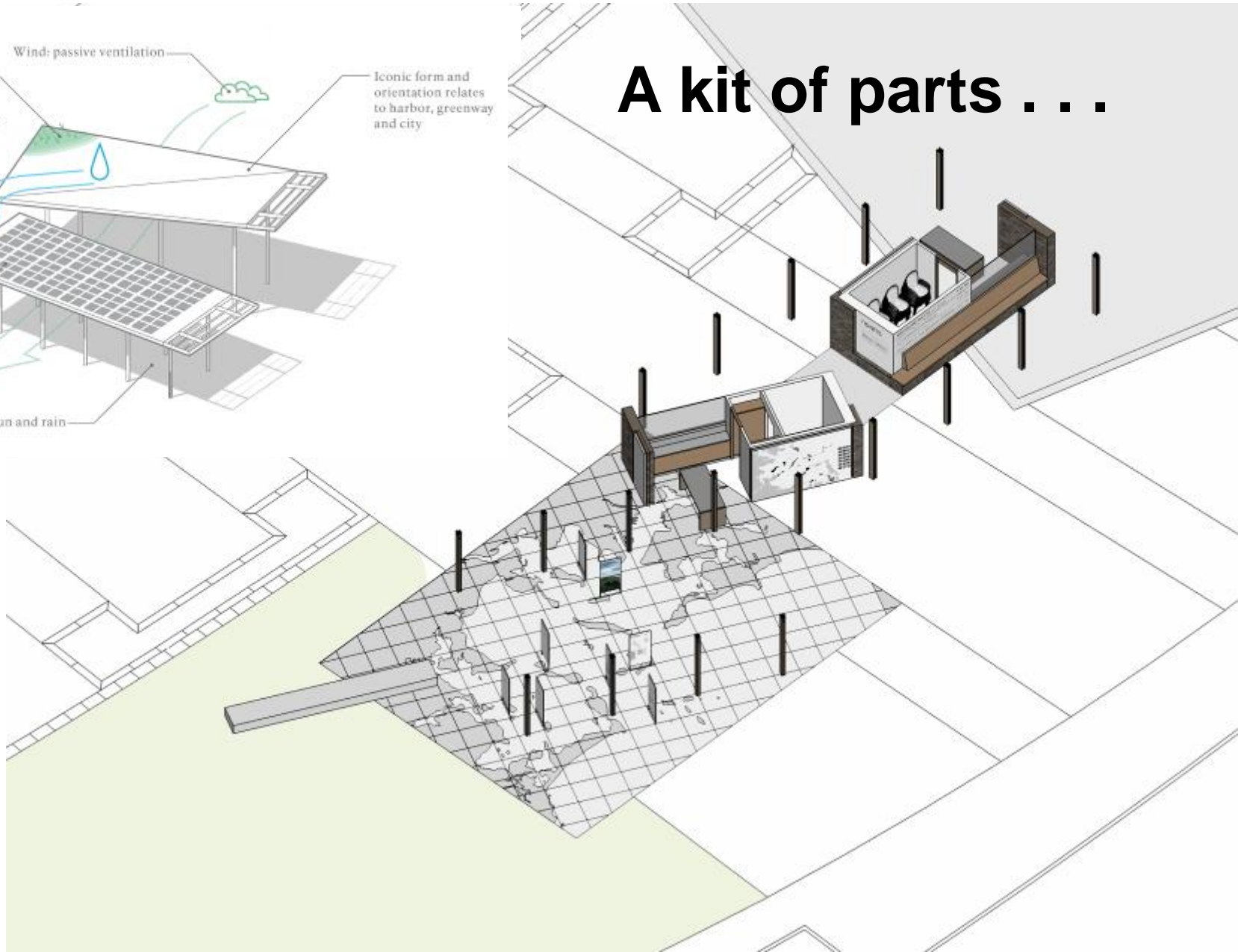
## funding

- planning, design, compliance . . . . . **\$1.28**
  - *source:* U.S. DOT (80%) and Island Alliance (20%)
- construction . . . . . **\$5**
  - *source:* NPS appropriation FY2009
- total project cost . . . . . **\$6.28**

# Boston Harbor Islands



**A kit of parts . . .**



# Boston Harbor Islands



# Boston Harbor Islands



# Boston Harbor Islands

2011 Honor Award for Design Excellence from the Boston Society of Architects

2011 Grand Honor Award from the Associated General Contractors of New England

Silver Award from the 2012 ACEC/MA Engineering Excellence Awards.

**YouTube**     15,973 videos



185 views

Published on Jul 17, 2012 by TEDxTalks

"This is the new public art. Not bronze statues of dead white guys or static pop art, but dynamic media art that reflects the city and the time we live in, and gives the energy of the city back to us."

[Show more](#)

Boston Harbor Islands Pavilion screens are included in the TEDx Boston video, by [Bostonharborislands](#) in playlist [Boston Harbor Islands Pavilion](#)

## Harbor Islands Pavilion wins 2012 American Architecture Award

Posted on September 5, 2012



We're pleased to announce that the Boston Harbor Islands Pavilion won a [2012 American Architecture Award from the Chicago Athenaeum](#).

Congratulations to the entire design and construction team: [Turner Special Projects](#), [S&F Concrete](#), [Shawn Keller](#), [Valley Crest](#), [Simpson Gumpertz & Heger](#), [Allied](#), [IDEO](#), [Reed Hilderbrand](#), [VHB](#), [Solar Design](#), and [Joel Lamere](#).

# Boston Harbor Islands

... is a gateway to the Boston Harbor Islands experience



# Boston Harbor Islands

## partnership operations

- long-term property agreement with Commonwealth
- constructed by Island Alliance
  - once constructed, facility donated to NPS
- information / orientation by NPS
- overall operations by Island Alliance
- maintenance by Island Alliance and others



# Boston Harbor Islands

## Island Alliance

- legislated partner
- actively supports park mission
- projects with Commonwealth
  - Peddocks Island: \$15M
  - Georges Island: \$8.6M
- pavilion design in cooperation with NPS
- construction management expertise
  - owners representative on contract
  - on board of directors





# Boston Harbor Islands

more.....

[www.youtube.com/user/Bostonharborislands](http://www.youtube.com/user/Bostonharborislands)

[Pavilion Provides New Pathway to Boston Harbor Islands](#)

[www.bostonharborislands.org/pavilion-cyberarts](http://www.bostonharborislands.org/pavilion-cyberarts)

