

Lake Superior Landscape Restoration Partnership

US Forest Service

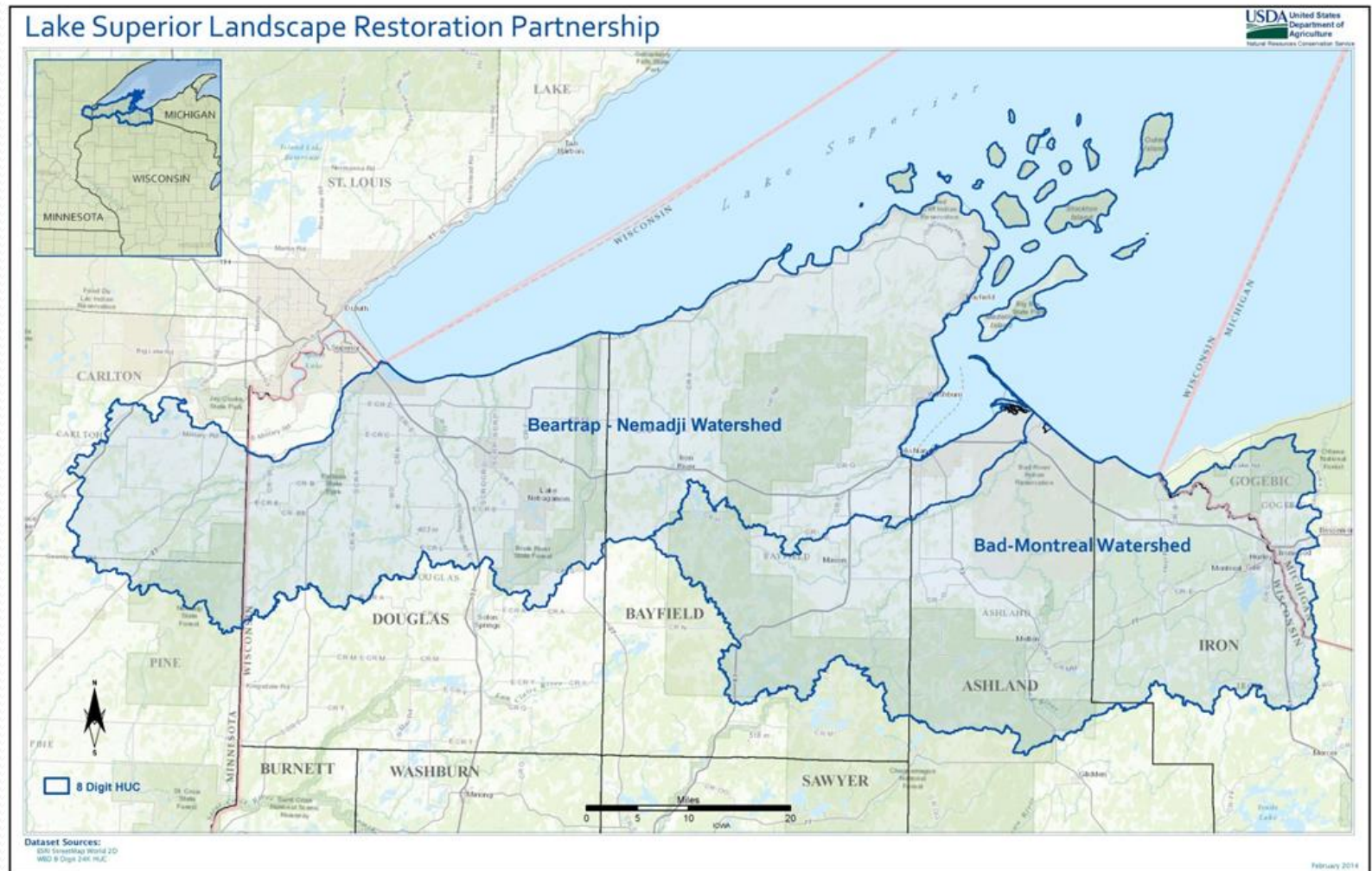
Natural Resources Conservation Service

Department of Natural Resources

Sigurd Olson Environmental Institute

All the other partners in the Lake Superior Basin?

The western part of the Lake Superior Watershed in Wisconsin is the highest priority and best suited area in Wisconsin for a collaborative effort between NRCS and the FS.



Partnership Readiness

- Chequamegon Bay Area Partnership (CBAP)
- Bad River Watershed Association
- Cold water tributaries to Lake Superior for Coaster Brook Trout restoration
- Great Lake Restoration Initiative
- Diverse Land Ownership

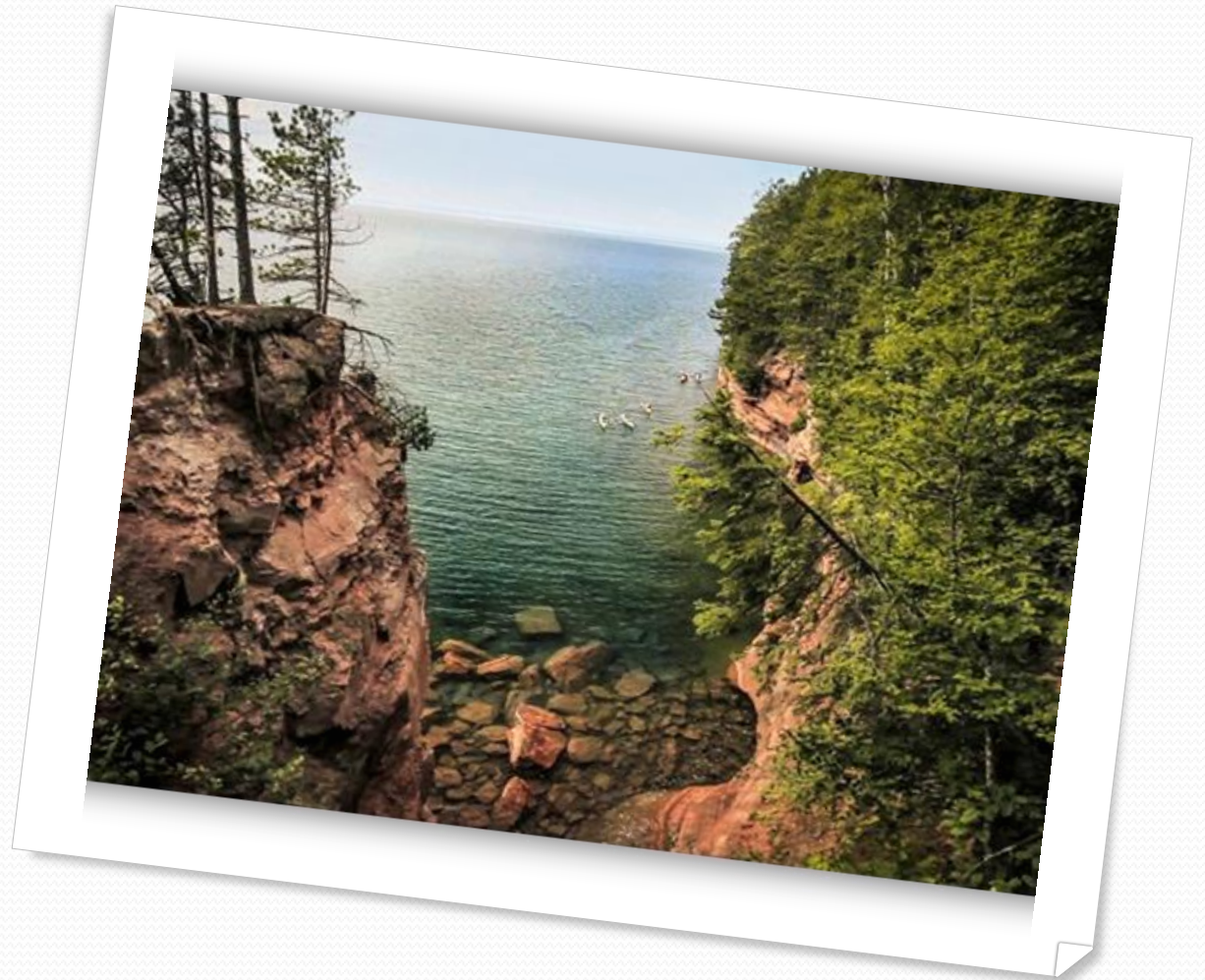
Improve the health and resiliency of forests on public and private lands

- Managed grazing for beef and dairy cows to improve soil health and water quality
- Install large woody debris for trout spawning habitat.
- Plant trees and shrubs to stabilize steep slopes.
- Manage barnyard runoff

The Partnership Continued:

- Stabilize eroding stream banks
- Decrease sediment loads to streams
- Create firebreaks and treat hazardous fuels
- Remove barriers to allow fish passage
- Reduce sediment runoff to trout streams from forest roads

The success of this project will also be measured by the number of meaningful collaborations between public and private partners that continue to produce meaningful outcomes long after the project ends.



The First Meeting

Packed house – amazing turn out of every different agency, local watershed groups, counties, cities and tribal entities!

- No agenda
- No notes taken
- No vision, no roles described
- Basically, hit every pit fall of developing a partnership that we have talked about in the academy!

PARTNERSHIP REGROUP

The local unit representative regrouped several weeks later...we decided we can do this!



Figure 2. Aerial shot of sediment flowing from Fish Creek to Chequamegon Bay after a rain event in June 2012.

The Second Meeting - Right Practices in the Right Place?

- Thankfully we got everyone to the table again!
- Tight agenda with focused topics
- Right practices in the best places in the basin
- Formed working groups of experts for each key species or theme in the partnership

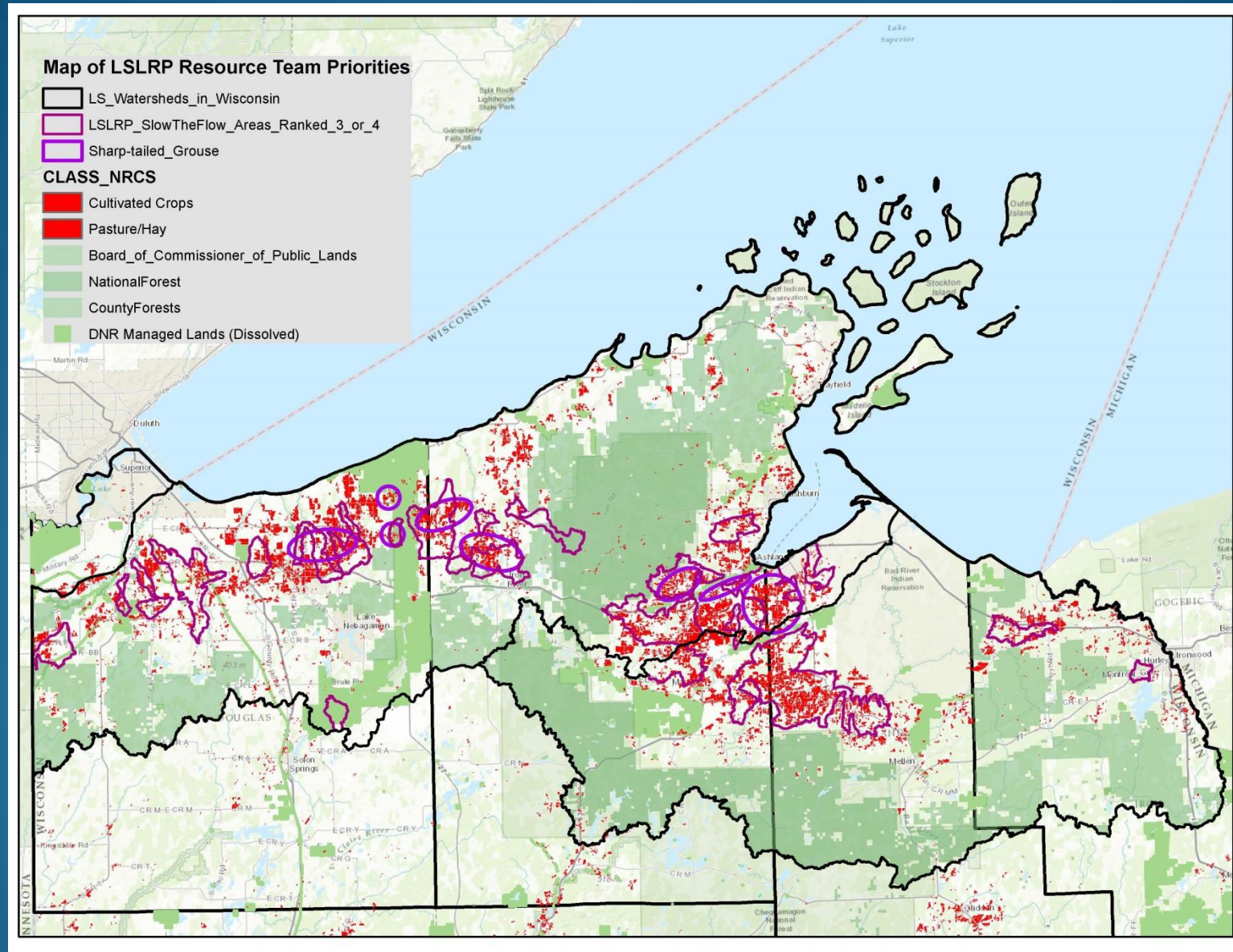


The Third Meeting – Energizing!

- Sub-team results
- NRCS is currently now drafting how they are going to utilize the data during sign up and outreach.



The Right Practices in the Right Places



Now what?

- The Forest Service just heard most likely we are going to receive \$600,000 for FY15 and for once I feel like we may be ready for it!
- Potential to fund a coordinator position for the Lake Superior Basin
- The momentum is there and who knows what may be next!

Personal Reflections

- Would have clarified my role for the agency sooner than later....
- Hard to predict what partners are going to do and what is important for them!
- Would have allocated more time to the partnership and talked to my supervisor
- Would have talked to the other key partner more up front and got their ideas on how to move forward