

The Forest Service's National Partnership Office

Joe Smith

National Partnership Office

USDA Forest Service

Managing by Network: Case Study

August 21, 2012



National Partnership Office



- “An Office to Foster Community Engagement and Public-Private Innovation”
- A resource for employees cultivating and building partnerships
- Provides policy direction and guidance at a national level

Background

An Office of Enablers

Public-Private
Partnerships

Conclusions

National Partnership Office



- In FY 2011, nearly 8,000 grants were made with partners and \$664 million in Forest Service funds were matched with \$616 million from partners.
 - But, partnerships and collaboration leverage more than dollars and volunteer hours.
 - Actively working to capture that more nuanced data

Background

An Office of Enablers

Public-Private
Partnerships

Conclusions

National Partnership Office

The Vision

- **Relationships**, accomplishing through the hands of others

Background

An Office of Enablers

Public-Private
Partnerships

Conclusions

National Partnership Office

The Vision

- **Relationships**, accomplishing through the hands of others
- **Policies** that enable

Background

An Office of Enablers

Public-Private
Partnerships

Conclusions

National Partnership Office

The Vision

- **Relationships**, accomplishing through the hands of others
- **Policies** that enable
 - Currently Crafting Donor Recognition Policy and Comprehensive Partnership Policy
 - Hoping to Reduce Barriers and Streamline the Partnership Process
 - Ultimately Clear up the Biggest Questions Surrounding Partnerships

Background

An Office of Enablers

Public-Private
Partnerships

Conclusions

National Partnership Office

The Vision

- **Relationships**, accomplishing through the hands of others
- **Policies** that enable
- **Strategic alliances** that foster outcomes

Background

An Office of Enablers

Public-Private
Partnerships

Conclusions

National Partnership Office

The Vision

- **Relationships**, accomplishing through the hands of others
- **Policies** that enable
- **Strategic alliances** that foster outcomes
- **Public-Private Partnerships**, allowing all to be stewards of our national forests

Background

An Office of Enablers

Public-Private
Partnerships

Conclusions

National Partnership Office

The Vision

- **Relationships**, accomplishing through the hands of others
- **Policies** that enable
- **Strategic alliances** that foster outcomes
- **Public-Private Partnerships**, allowing all to be stewards of our national forests
- **Empowering** collaborative stewardship

Background

An Office of Enablers

Public-Private
Partnerships

Conclusions

National Partnership Office

The Vision

- Relationships, accomplishing through the hands of others
- Policies that enable
- Strategic alliances that foster outcomes
- Public-Private Partnerships, allowing all to be stewards of our national forests
- Empowering collaborative stewardship
- Youth and young adults, the next generation

Background

An Office of Enablers

Public-Private
Partnerships

Conclusions

National Partnership Office

An Office of Enablers

Working Directly with Counterparts Outside DC

- Partnership Resource Center
- Grants and Agreements Guides
- Partnership Guide
- Ethics Guide
- Trainings
- Peer Learning Sessions



Background

An Office of Enablers

Public-Private
Partnerships

Conclusions

National Partnership Office

An Office of Enablers

Peer Learning Sessions to Grow a Network

- Partnership Network Developing – An Interconnected Web of Partnership Professionals
- In FY12 alone, the Network provided with trainings on nine different topics
 - Included Volunteer Management, Friends Groups, Ethics

Background

An Office of Enablers

Public-Private
Partnerships

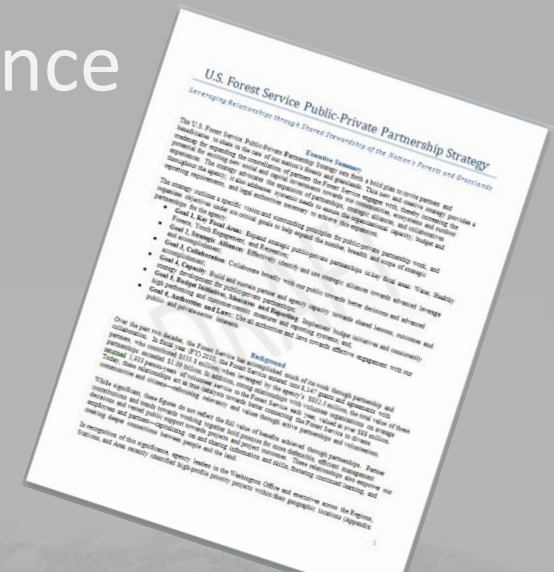
Conclusions

National Partnership Office

Public-Private Partnerships

A Major Focus at the Washington Level

- National Public-Private Partnership Strategy
- R/S/A Strategies also developed
- Area of interest is high-performance partnerships



Background

An Office of Enablers

Public-Private Partnerships

Conclusions

National Partnership Office

Public-Private Partnerships

What is a High-Performance Partnership?

- Engage multiple organizations, partners, volunteers, businesses, and others
- Encourage leveraging of resources toward a mutually beneficial outcome
- Secure significant financial investment from partners *or* significant on-the-ground accomplishments through partners

Background

An Office of Enablers

Public-Private
Partnerships

Conclusions

National Partnership Office

Public-Private Partnerships

But High-Performance Partnerships Are More...

- Achieve objectives in the Agency's high-priority areas (water, restoration, etc.)
- Engage Executives throughout project
- Explore new approaches with non-traditional partners to achieve shared benefits (i.e., working with insurance companies to realize reductions in wildfire risk)

Background

An Office of Enablers

Public-Private
Partnerships

Conclusions

National Partnership Office

Public-Private Partnerships

America's Longleaf Restoration



- Broad conservation plan developed in 2000s
- Estimated that \$70 million invested in longleaf restoration on public and private lands
- Managed collaboratively via partnerships with states, universities, non-profits, and others

Background

An Office of Enablers

Public-Private
Partnerships

Conclusions

National Partnership Office

Public-Private Partnerships

America's Longleaf Restoration



- Numerous partners in this landmark endeavor
 - US Department of Agriculture, Department of Defense, Department of the Interior, National Fish and Wildlife Foundation, The Nature Conservancy, National Wild Turkey Federation, and more

Background

An Office of Enablers

Public-Private
Partnerships

Conclusions

National Partnership Office

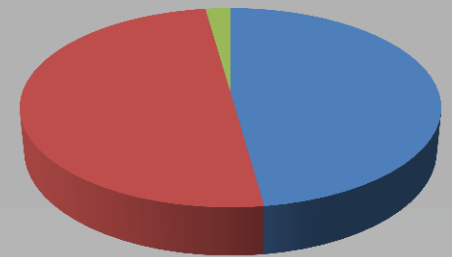
Public-Private Partnerships

America's Longleaf Restoration: FY 2011



- USFS lands – 495,000 acres
- Private lands – 473,500 acres
- State forest lands – 22,000 acres

■ Private
■ USFS
■ State



Total Acreage more land than Rhode Island!

Background

An Office of Enablers

Public-Private
Partnerships

Conclusions

National Partnership Office

My Personal Insights



Three Lessons Learned:

- Each and every partnership matters
- A breadth and depth of organizational capacity is necessary
- The partnership world is growing!

Background

An Office of Enablers

Public-Private
Partnerships

Conclusions

The Forest Service's National Partnership Office

Questions?

