

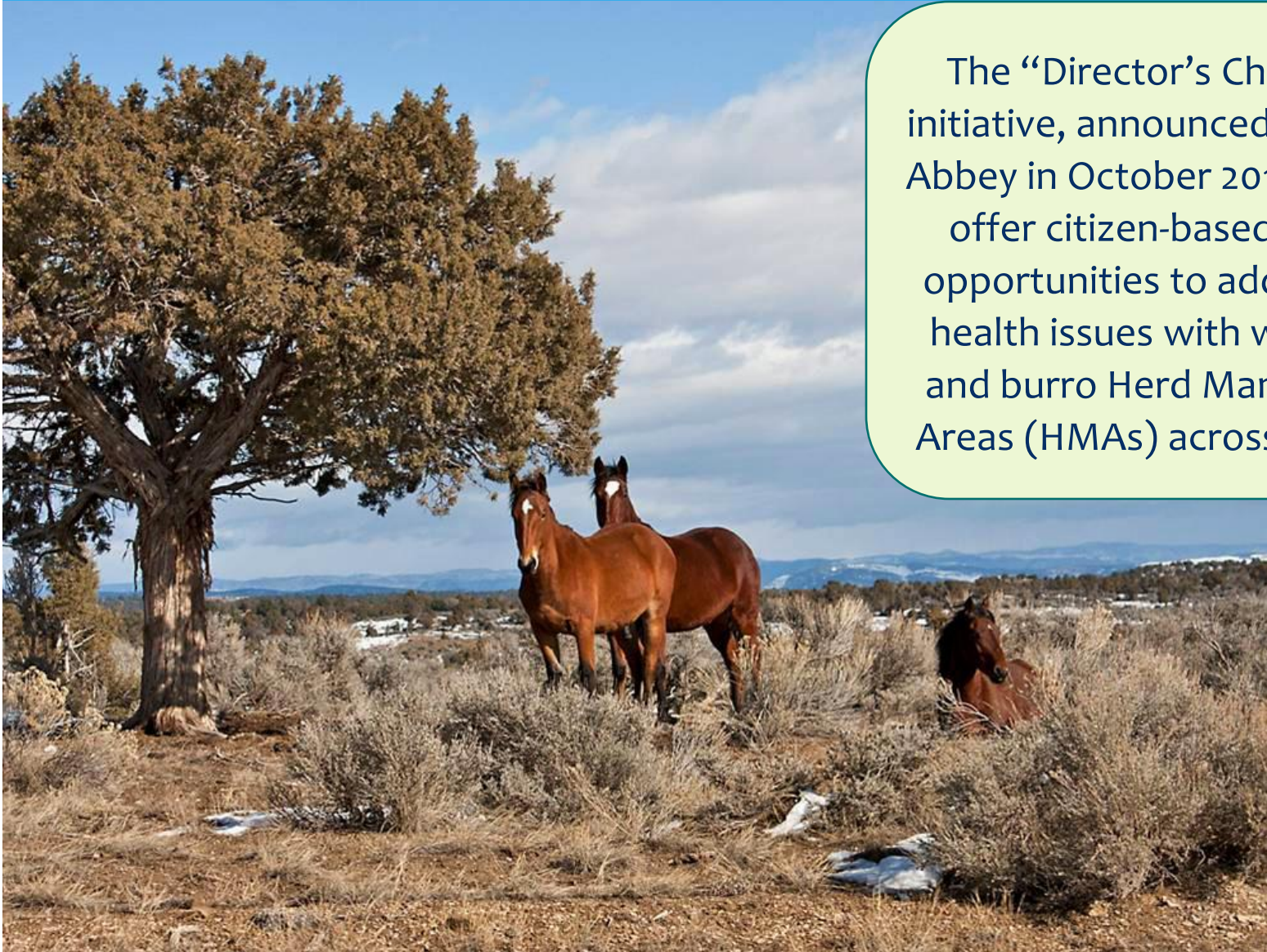


White River Field Office Director's Challenge

James Roberts
Assistant Field Manager
White River Field Office Meeker, CO

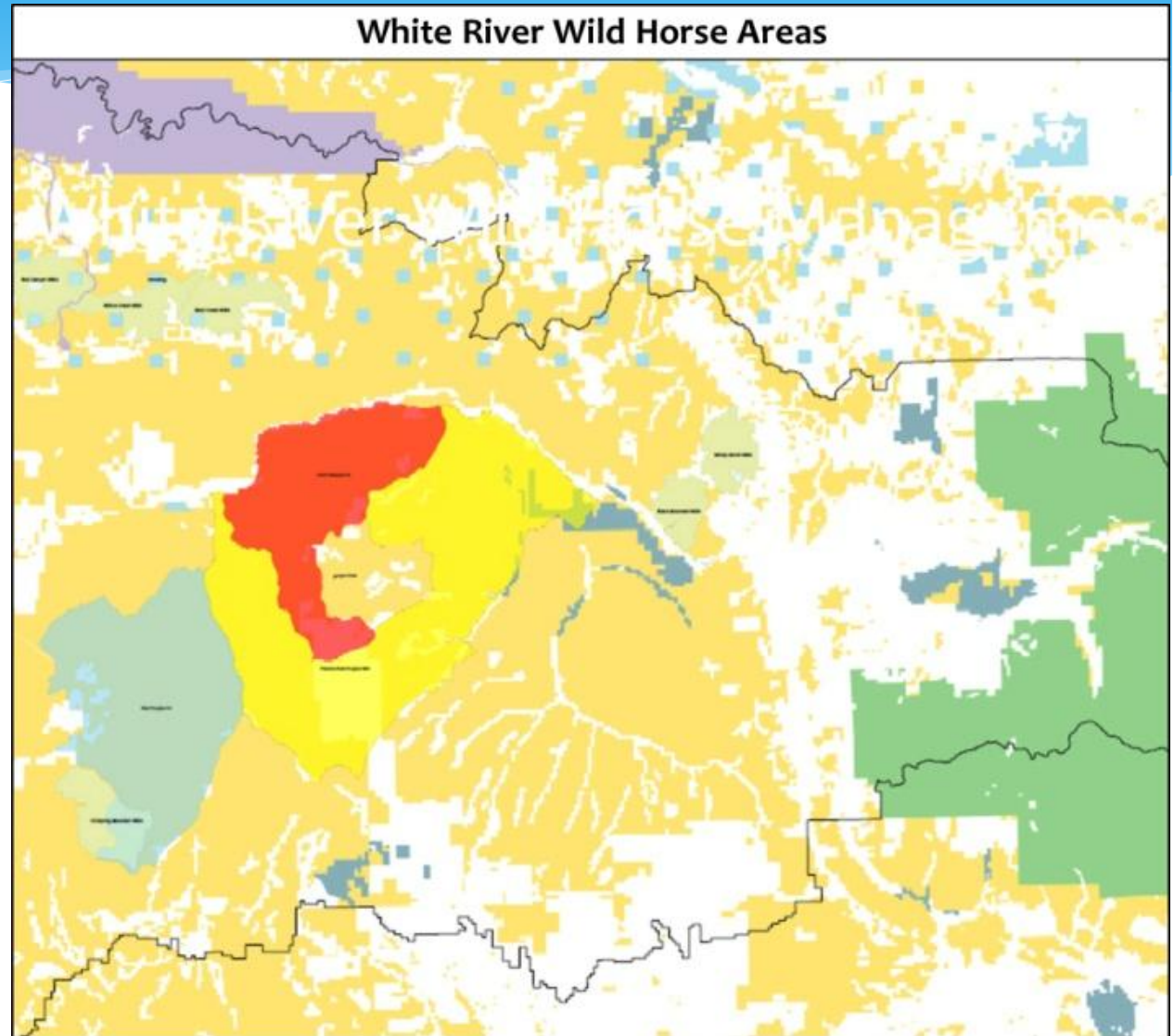
FY 2012 Director's Challenge

The “Director’s Challenge” initiative, announced by Robert Abbey in October 2011, seeks to offer citizen-based science opportunities to address land health issues with wild horse and burro Herd Management Areas (HMAs) across the West



White River Wild Horse Management

- * One Herd Management Area, 190,130 acres
- * 175 miles of Herd Mgmt Boundary Fence Line
- * Two Herd Areas, an additional 212,673 acres



Why a Partnership



- * Improve collection of Rangeland Health monitoring data
- * Assist with repair and maintenance of Herd Management Area rangeland improvements
- * Development of motorized viewing tour
- * Improved documentation of wild horses within the Management Area

What We Wanted

- * Local Partnership Group Development (5-20 members)
- * Develop an MOU with Local Conservation Districts to share resources, technology, and help in the developing partnership
- * Provide training on newly approved Colorado Rangeland Monitoring Initiative Protocols
- * Develop Monitoring Toolboxes for partner utilization

Who Should Partner

- * Conservation Districts
- * Wild Horse Advocates
- * Live stock Permittees
- * General Publics



Who Should Partner

- * Bring Varying Views Together
- * Health Issues of Friends Group Main players
- * Law Suites
- * Environmental Issues



Success!

- * Partner with Rifle Correction Facility to complete five miles of fence construction
- * MOU with Conservation Districts to implement livestock partnership and monitoring
- * Held first joint training on Colorado rangeland monitoring initiative protocol