

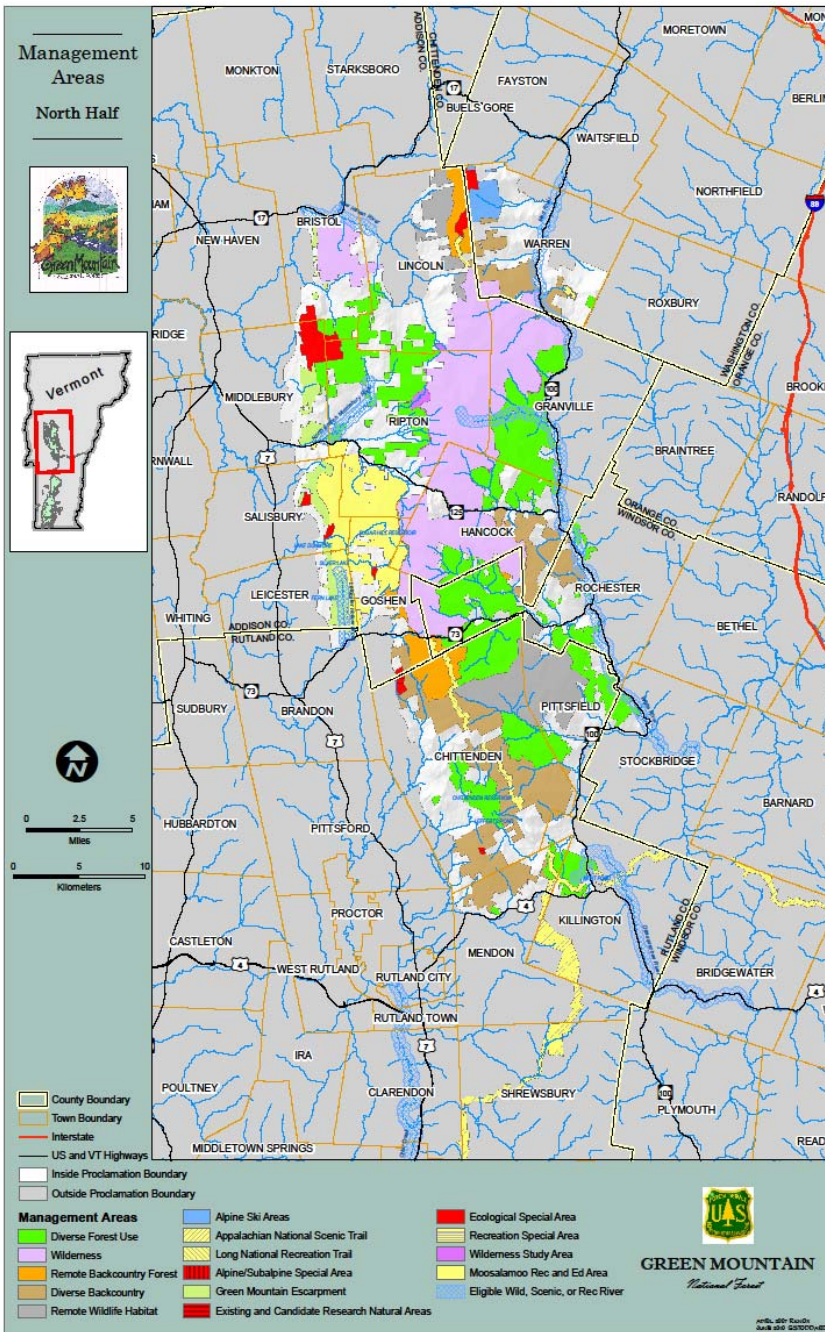


# Recovering from Hurricane Irene

## Partner Assistance on the Green Mountain National Forest

Holly Knox  
Recreation and Trail Coordinator  
Rochester & Middlebury Ranger Districts





# Green Mountain National Forest

## North Zone

Over 350 Miles of Trail:

- 215 Mi. Snowmobile
- 154 Mi. Ski & Snowshoe
- 107 Mi. Hike
- 100 Mi. Mountain Bike
- 32 Mi. Equestrian

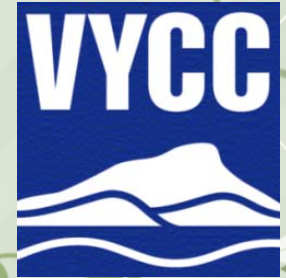
2 USFS Trail Field Staff

9 Trail Partner Organizations



# Community of Collaboration

## Providing Trail & Recreation Site Maintenance Assistance



- VT Youth Conservation Corps
- VT Mountain Bike Association
- VT Association of Snow Travelers
- Catamount Trail Association
- Green Mountain Club
- Moosalamoo Association
- Middlebury High School Technical Center
- Addison County Counseling Service At Risk Youth
- State of Vermont



# August 2011 Hurricane Irene



# Forest Closures

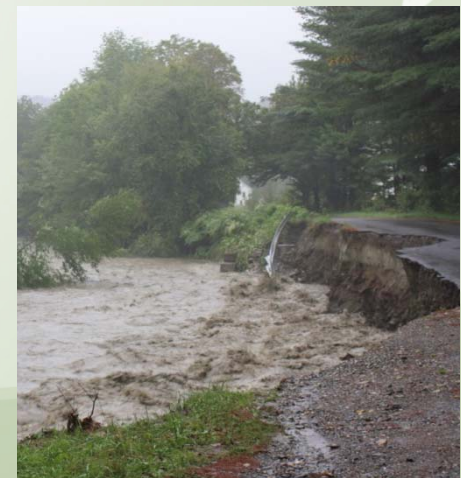


Initial Closure of Entire GMNF Followed by Closure of:

- 20 roads
- 10 developed recreation sites
- 60 trails (over 200 miles)

## Current Closures

- 9 roads
- 0 developed recreation sites
- 4 trails (less than 10 miles)



# Damages



## Estimated Trail and Recreation Site Damages:

- Over \$550,000 in damaged trails
- Over \$415,000 in damaged developed recreation sites



# Trail Damage



FT 825: Catamount  
Trail-Lincoln Gap



FT 700:  
Taylor Brook

# Trail Damage



Austin Brook



Chittenden  
Brook





# Recreation Site Damage



Peavine



Texas Falls Observation  
and Picnic Areas

# Irene Recovery Funding



- Over \$800,000 in Trail-Related Irene Repair Funding Received (almost doubled GMNF budget!)
- Long-standing Challenge Cost Share Agreements: capacity to put people on ground quickly

# Managing Agency Agreements



- Recreation partners utilized to repair infrastructure via CCS Agreements and Participating Agreement
- Grant-funded Department of Labor workers utilized to repair and open damaged sites and trails



# Leveraging Partnerships: Stretching Dollars

## Incorporating Volunteer Labor into Recovery Projects



- Over 600 hours: VT Association of Snow Travelers volunteer labor to repair snowmobile trails
- Over 400 hours: VT Youth Conservation Corps displaced crew time donated for trail repairs (in addition to 800 hours of GMNF funded crew time)
- Over 200 hours: partner volunteer trail assessments and repairs

# Utilizing Partners for Repairs

**To address the safety of our partners and volunteers:**

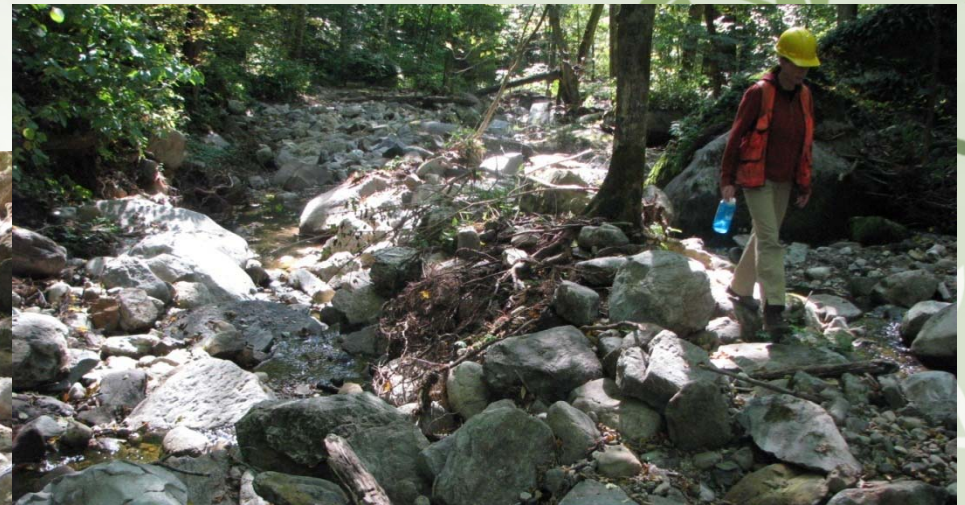


- Prior to sending partners to trail projects, pictures of the existing situation and trail damage were reviewed by Forest Leadership
- Partners signed volunteer agreements that identified the “Job Hazard Analyses” for repair activities and the required “Personal Protective Equipment”

# Teamwork: VT Youth Conservation Corps, VT Mountain Bike Association, and Moosalamoo Association



Leicester Hollow  
Trail: Before



Trail formerly to right



Trail formerly to left

# Teamwork: Trail Repairs

## Leicester Hollow: After



# VT Association of Snow Travelers: Trail Repairs

North Pond Trail:  
Before and After  
Volunteer Repairs





# VT Association of Snow Travelers: Trail Repairs



Forest Trail  
(FT) 793: A&D

FT 44:  
Bloodroot  
Gap



# VT Department of Labor Repairs



FT 189: Robert Frost  
National Recreation Trail



# VT Association of Snow Travelers: Trail Repairs

## Tunnel Brook Before



## After

## Green Mountain National Forest

WHAT: VOLUNTEER & PARTNER  
APPRECIATION AWARDS BANQUET

DATE: FEBRUARY 16, 2012

TIME: 6:30-8:30 P.M.

Please join the Forest Service in  
celebrating the work of  
volunteers and partners, like  
you! We would like to thank  
you for your contributions.

**Location:** Amee Farm in Pittsfield. Event  
is on the 2nd floor of the white barn, next  
to the greenhouses. You will see a large  
wagon wheel with a sign that notes Hike  
and Bike Trails. [www.ameefarm.com](http://www.ameefarm.com)

PLEASE R.S.V.P.  
HOLLY KNOX (802) 767-4261 x 530



# Appreciation

# Celebration!

## Volunteer Banquet



# We Survived Irene!



...and learned:

1. Maintaining partner relations enables us to leverage additional dollars and volunteer labor (Brian O'Neill Success Factor # 14: diversify funding)
2. Excluding partners damages relations and takes time to rebuild trust (O'Neill Factors 6 & 8: need partner ownership from whole organization and leave control at the door!)
3. We can't maintain public recreation opportunities without our partners! It was great to celebrate success! (O'Neill Factor #18)