

A TALE OF TWO CITIES

URBAN WILDLIFE REFUGE PARTNERSHIPS IN NEW
HAVEN, CT AND PROVIDENCE, RI

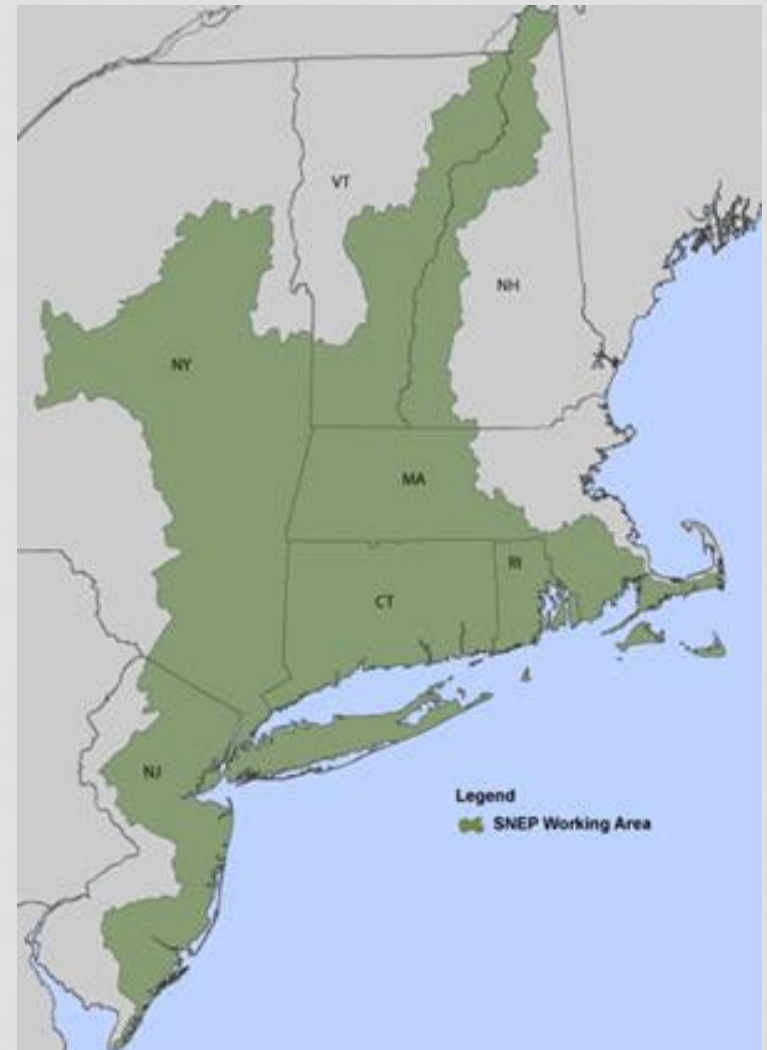
Cindy Corsair
Fish and Wildlife Biologist
Southern New England-New York Bight Coastal Program, RI



USFWS SNEP COASTAL PROGRAM

Our Mission:

Develop **partnerships** to identify, restore and protect regionally important habitat in the Southern New England-New York Bight Coastal Program area.



USFWS URBAN WILDLIFE REFUGE PROGRAM

(UWRP)

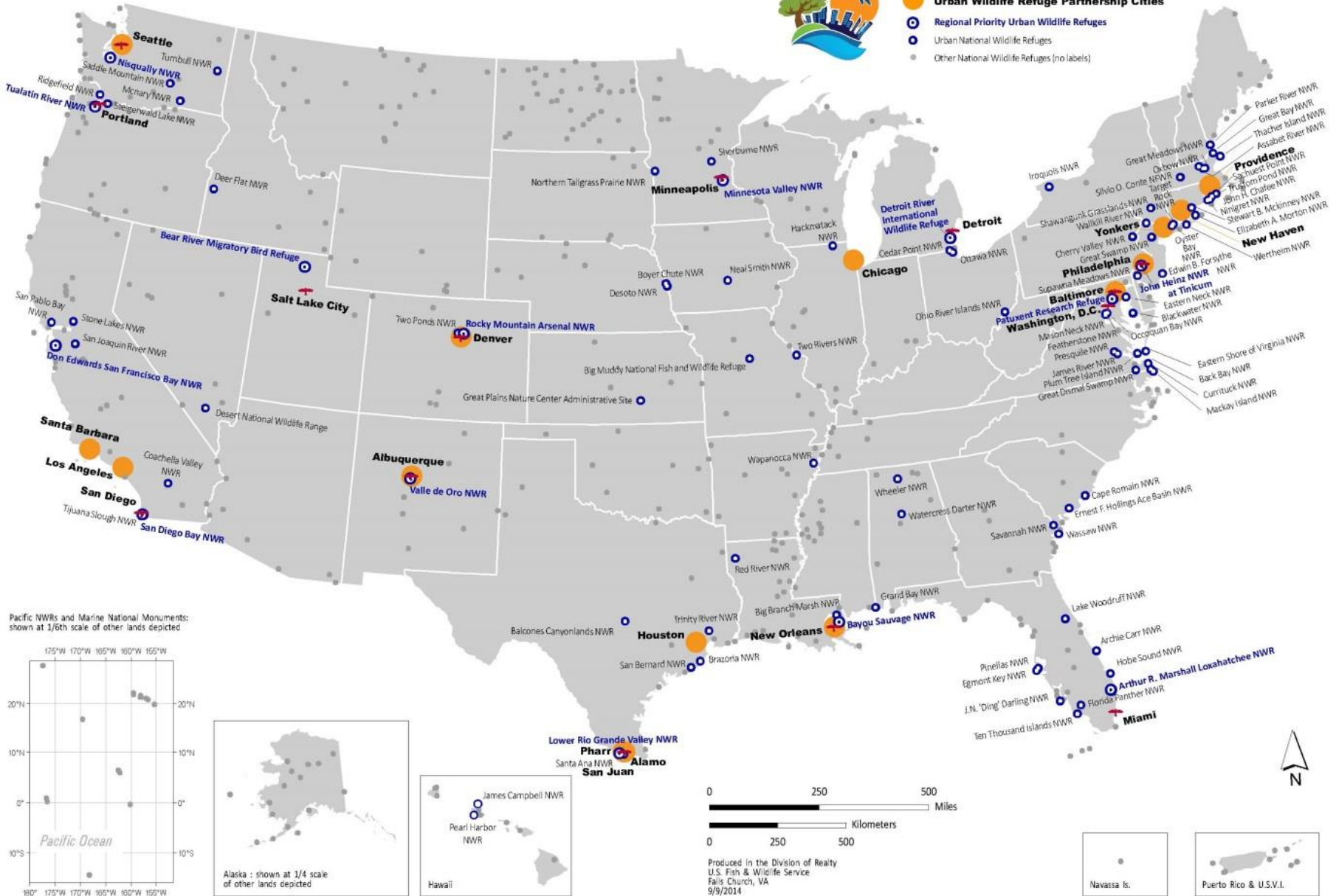


U.S. Fish & Wildlife Service

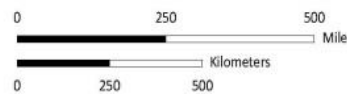
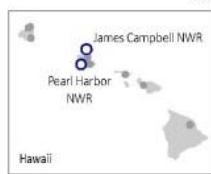
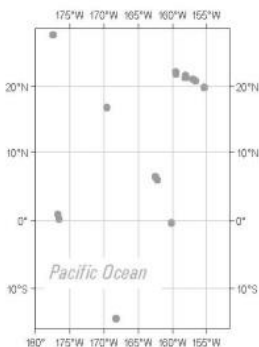
Urban National Wildlife Refuges



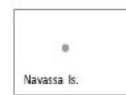
- Urban Bird Treaty Cities**
- Urban Wildlife Refuge Partnership Cities**
- Regional Priority Urban Wildlife Refuges**
- Urban National Wildlife Refuges**
- Other National Wildlife Refuges (no labels)**



Pacific NWRs and Marine National Monuments: shown at 1/6th scale of other lands depicted



Produced in the Division of Realty
U.S. Fish & Wildlife Service
Falls Church, VA
9/9/2014





“People who care conserve; people who don’t know don’t care. What is the extinction of the condor to a child who has never seen a wren?” - Robert Michael Pyle

CONNECTING PEOPLE TO NATURE: A TOP PRIORITY

Urban Wildlife Refuge Partnerships

- 7 partnerships in the northeast region and 17 partnerships nationwide
- New Haven and Providence partnerships designated in 2013 and 2014



Schoolyard Habitat Program

- 18 projects in Connecticut, 1 in Rhode Island
- Over 500 projects nationwide
- Stepping Stones of Engagement



WHAT IS THE SCHOOLYARD HABITAT PROGRAM?



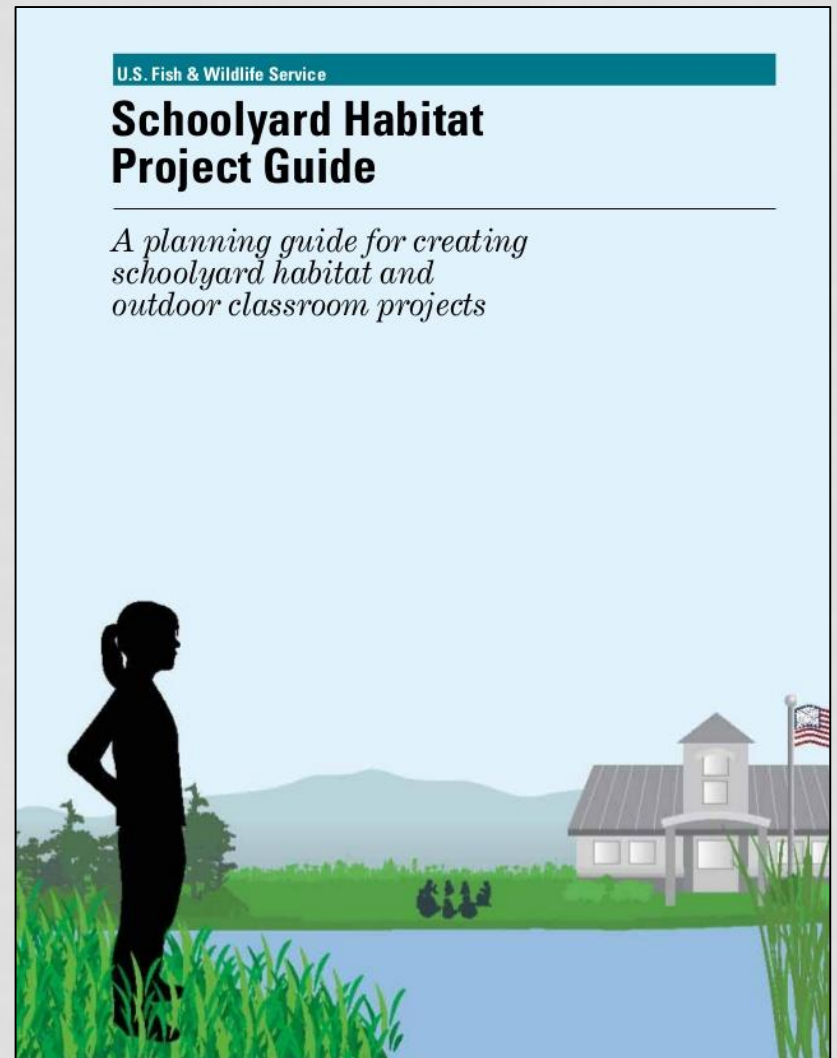
A program designed to **connect** students with the outdoors, **restore** wildlife habitat on urban school grounds, and **inspire** the next generation of environmental leaders.



CHARACTERISTICS OF SCHOOLYARD HABITAT PROJECTS

Every project is different, but all share several key elements:

- Ecologically sound
- Benefit wildlife and people
- Integrated into curriculum
- Designed to encourage long-term stewardship





NEW HAVEN HARBOR WATERSHED
URBAN WILDLIFE REFUGE PARTNERSHIP

NEW HAVEN, CONNECTICUT



NEW HAVEN URBAN PARTNERSHIP

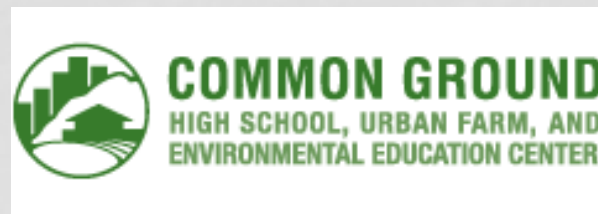
- Established in 2013
- Major components:
 - Urban Oases
 - Schoolyard Habitats



NEW HAVEN PARTNERS



Yale PEABODY MUSEUM
OF NATURAL HISTORY



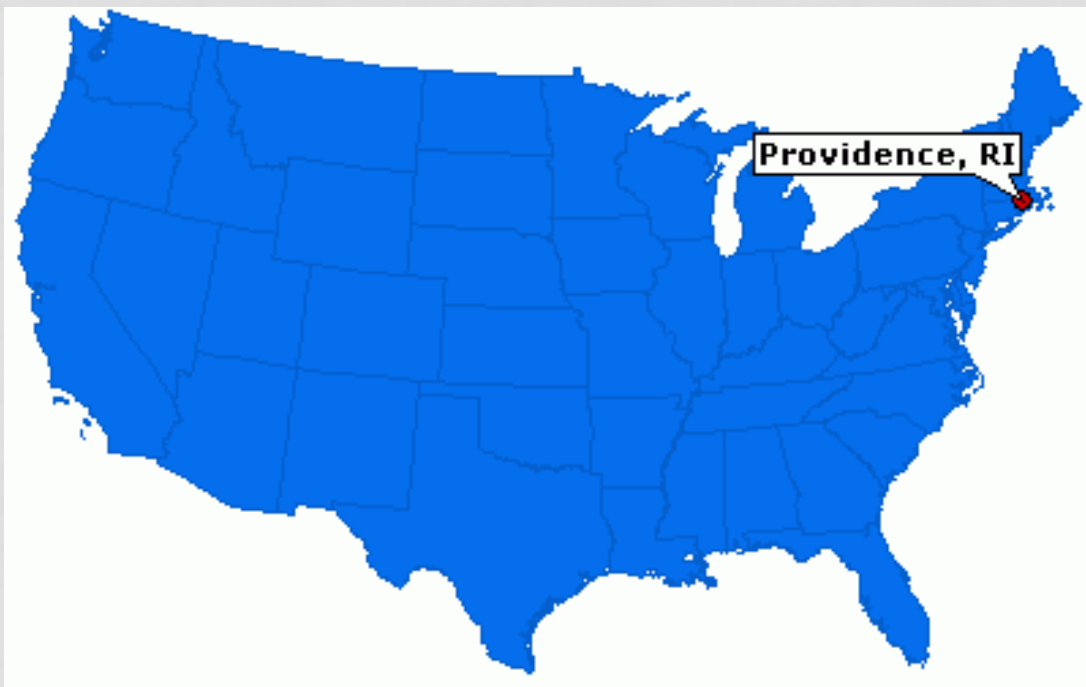
CHALLENGES: NEW HAVEN

- Succession
- Personalities
- Roles



PROVIDENCE PARKS URBAN WILDLIFE
REFUGE PARTNERSHIP

PROVIDENCE, RI

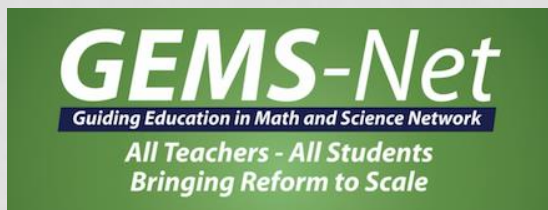
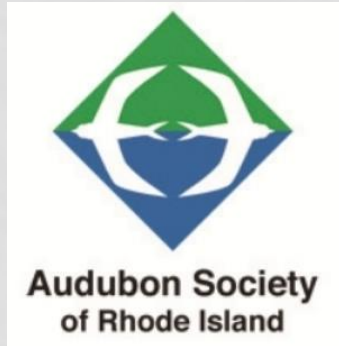


PROVIDENCE PARKS URBAN WILDLIFE REFUGE PARTNERSHIP

- Major components:
 - Parks as outdoor classrooms
 - SYH
 - RIEEA



PROVIDENCE PARTNERS





Rhode Island Environmental Education Association



RHODE ISLAND ENVIRONMENTAL EDUCATION ASSOCIATION

- Pilot SYH project at Teacher Institute School – May 2016
- Led to agreement with Audubon Society of RI
 - Grants of \$3k to up to six schools over next 5 years

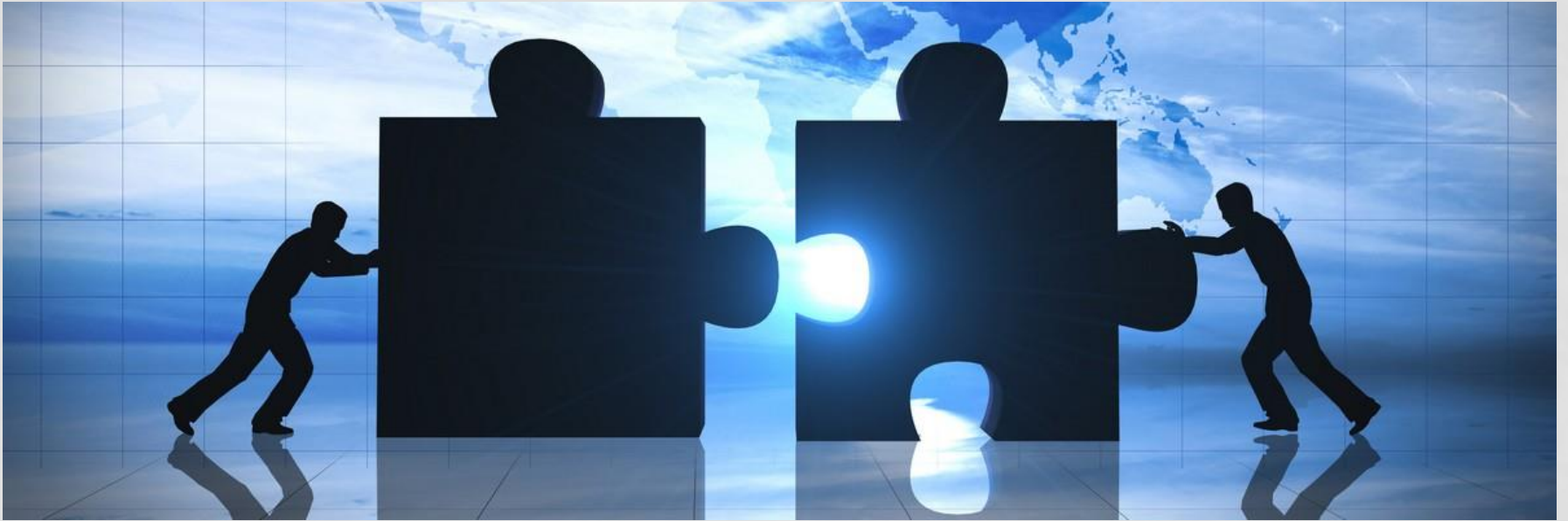


ABOUT A YEAR IN...

- Local university's Cooperative Extension developing a school garden program in Providence
- Contracted landscape architect

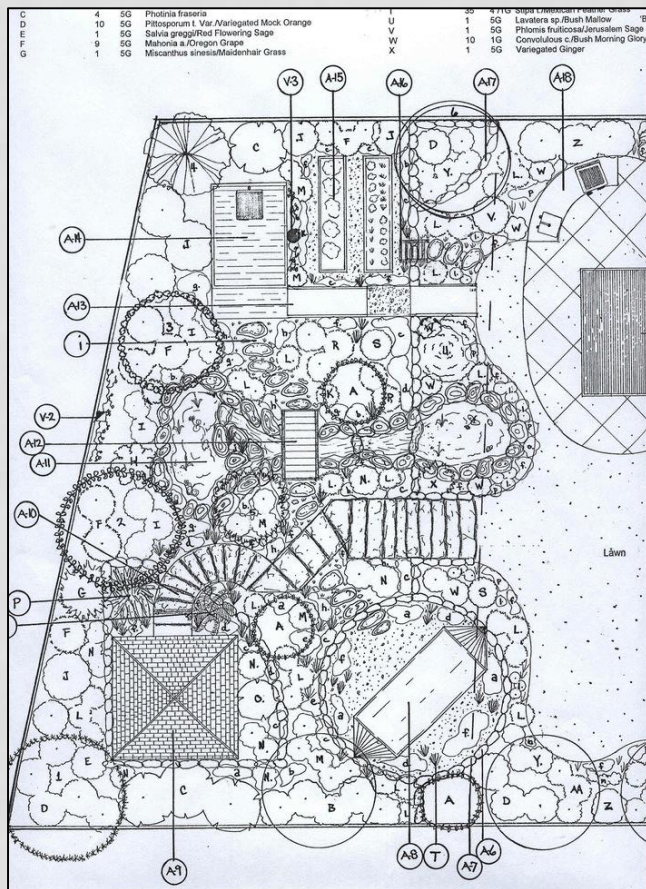


GREAT! A NEW PARTNER!

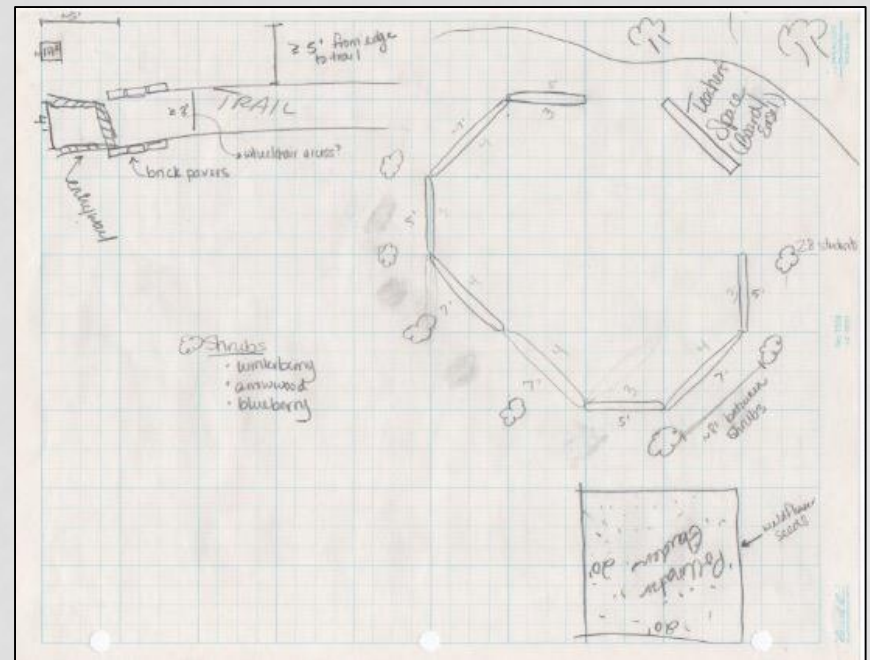


NOT SO FAST...

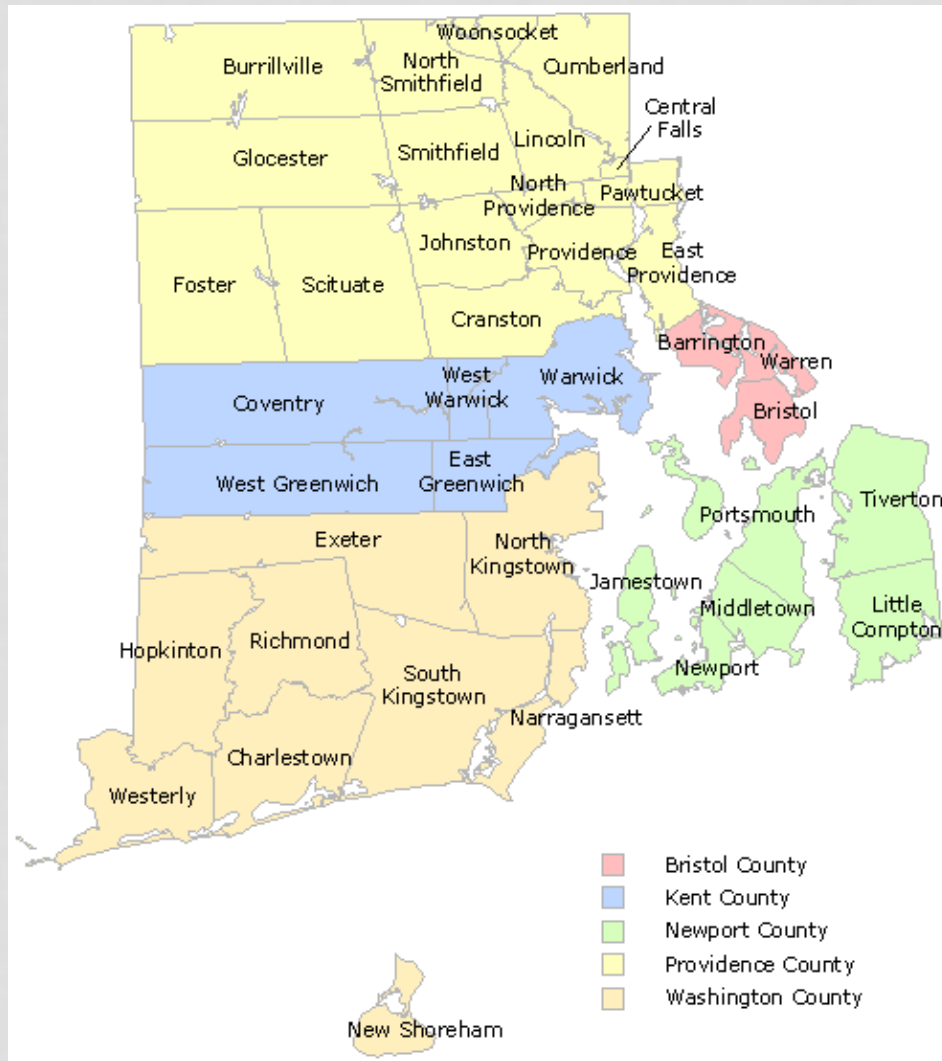
Landscape Architect



School's Master Plan

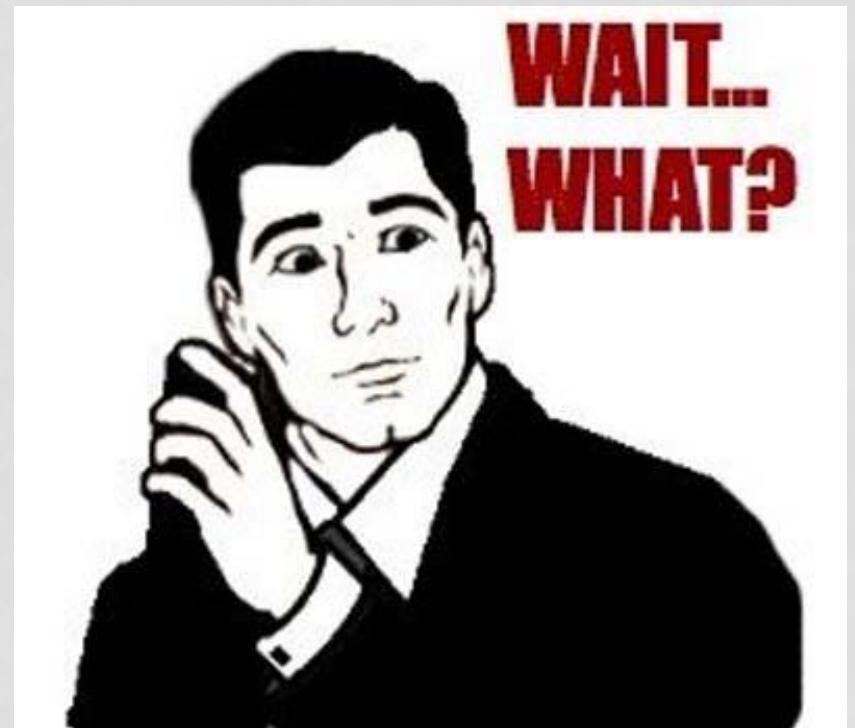


SOLUTION: DIVIDE AND CONQUER

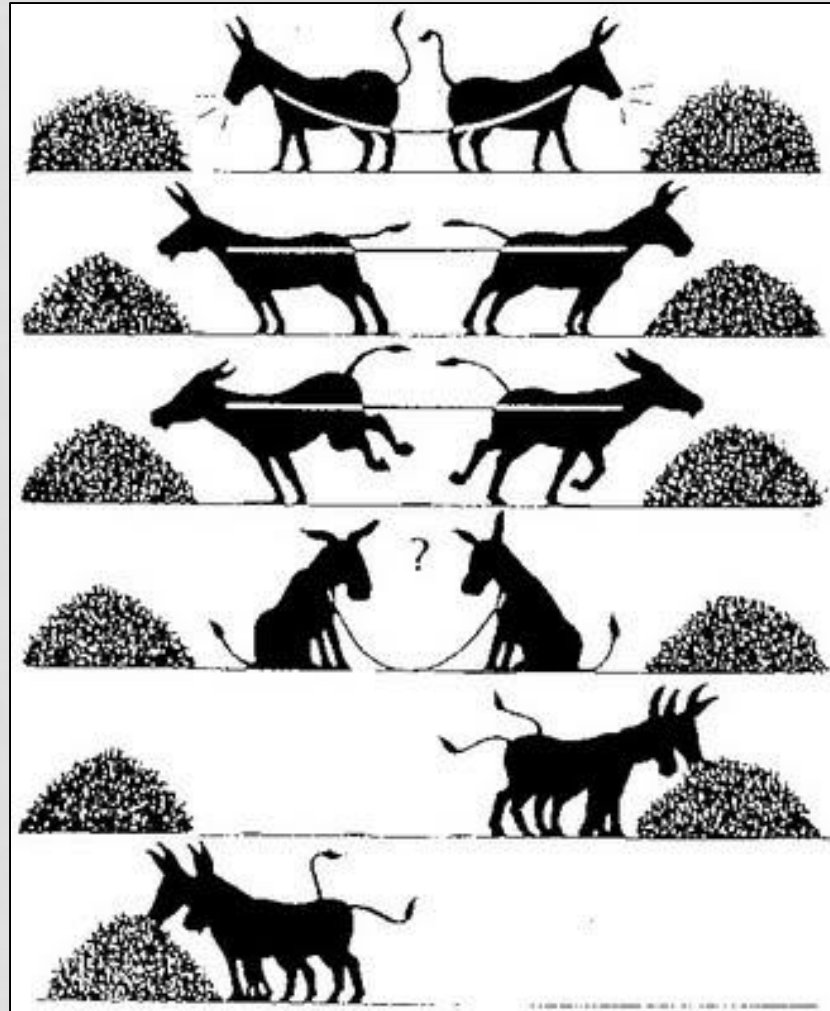


A GOOD PLAN IN THEORY

- Despite our divide and conquer plan, we have continued to overlap and cause confusion at the schools
- Schools do not realize we are different programs/organizations



COMPETITION V. COLLABORATION



EXAMPLES



ANYONE ELSE?

- Raise your hand if you have ever been in a situation where you see potential in a partner but they are unwilling to collaborate.



HELP!

- What might be some conversation game-changers with this partner?
- What have you found are successful ways to distinguish your agency/program from others – to help reduce confusion among the public?