

Minnesota Valley Trust and Minnesota Valley NWR & WMD Complex

Brooke Burrows

Wildlife Refuge Specialist

U.S. Fish and Wildlife Service



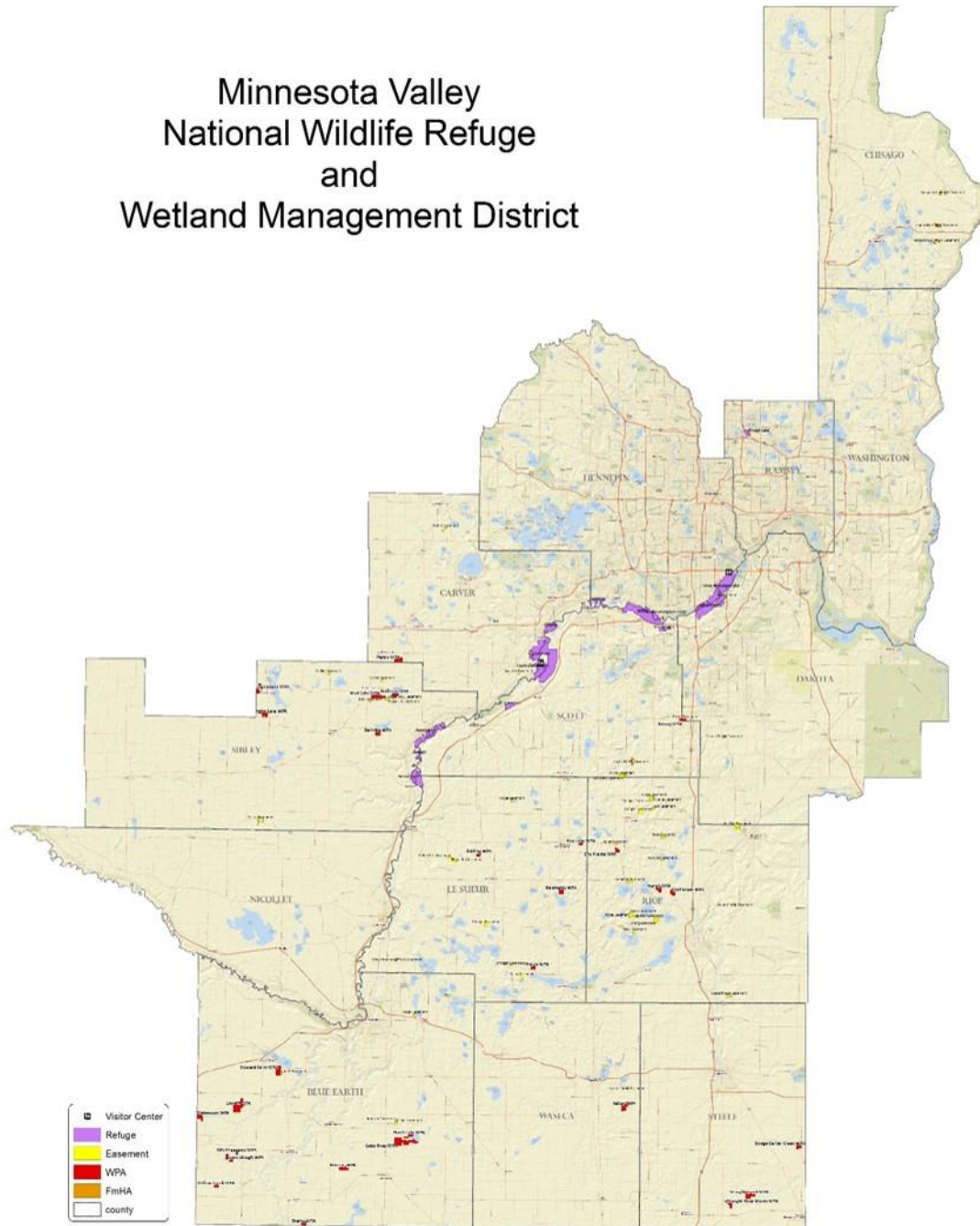


Brooke Burrows

Wildlife Refuge Specialist at
Minnesota Valley National
Wildlife Refuge and Wetland
Management District

- Career Pathways Placement
January 2017
- Detroit Lakes Wetland
Management District
- Patoka River National Wildlife
Refuge
- Okefenokee National Wildlife
Refuge

Minnesota Valley National Wildlife Refuge and Wetland Management District



Urban Refuge: Minneapolis/ St. Paul

- Refuge founded in 1976: To protect the habitat from development in the growing metropolitan area of Minnesota
- Headquarters and refuge Units Located close to MSP Airport
- 2001 Airport Runway Expands
 - Expansion to cause negative effects on wildlife and refuge lands



Conflict

- Minneapolis/St.Paul Airport Runway expansion
- Encroaches on Refuge acquisition boundary
- Causes cumulative effects of disruption to wildlife from noise pollution
- Impedes ability to use main “outdoor classroom” for interpretation and

What Would You Do?

What would you do in this situation?

Have you had a similar experience?

Minnesota Valley Trust
and
Minnesota Valley Lands
Inc.



Partnership in the Making

- Refuge Staff and local Natural Resource groups come together with a mitigation plan
- Asked for the \$26 million to be set aside specifically for the Refuge
- August 2001 Minnesota Valley Trust is Born
 - All the mitigation funds set aside to the 501c3 Organization

Minnesota Valley Trust

- 5 Supporting Organizations on the Trusts Board: Audubon MN, Friends of MN Valley, Carver County Commissioner, MN DNR, MN Waterfowl Association, MN Valley Lands Inc.
- Purpose: to manage the investment and spending of the mitigation funds
- Objectives: Acquire, restore, and enhance at least 4,090 acres, construct a new visitor center, and construct other visitor access for EE and wildlife interpretation
 - Completed goal in 2013





Minnesota Valley Lands Inc.

- Created to Protect Trust from litigation
- MN Valley Lands holds the purchased properties of the Trust
 - If a suit were to be laid against the land, the Trusts mitigation funds would be secure
- Allows for Partners for Fish and Wildlife funds and biologists to work on the restoration



Exceeding Expectations

- By 2013 the Trust had acquired 4,977ac of land
- Due to financial investments, the Trust still had \$25million
- This financial success allowed the Trust to continue supporting MN Valley NWR & WMD



New Objectives

- The Trust created a new Objectives to continue it's mission and use the funds from the mitigation plan
 - Acquire and restore at least 3,000ac
 - Provide Financial support for MN Valley via maintenance, operations, and other subsidies for programs.



Up to Date

- The Trust has acquired 919ac
- Many acquisitions are in progress
- 5 positions are funded via the Trust
- Maintenance projects are taken on: Addition of bathrooms in basement to Rapids Lake Visitor Center, purchasing reverse osmosis for the Rapids Lake Visitor Center
- Grant Collaborations and Matching
- Conservation Corps of Minnesota and Iowa 11 month Crews

What Do You Think?

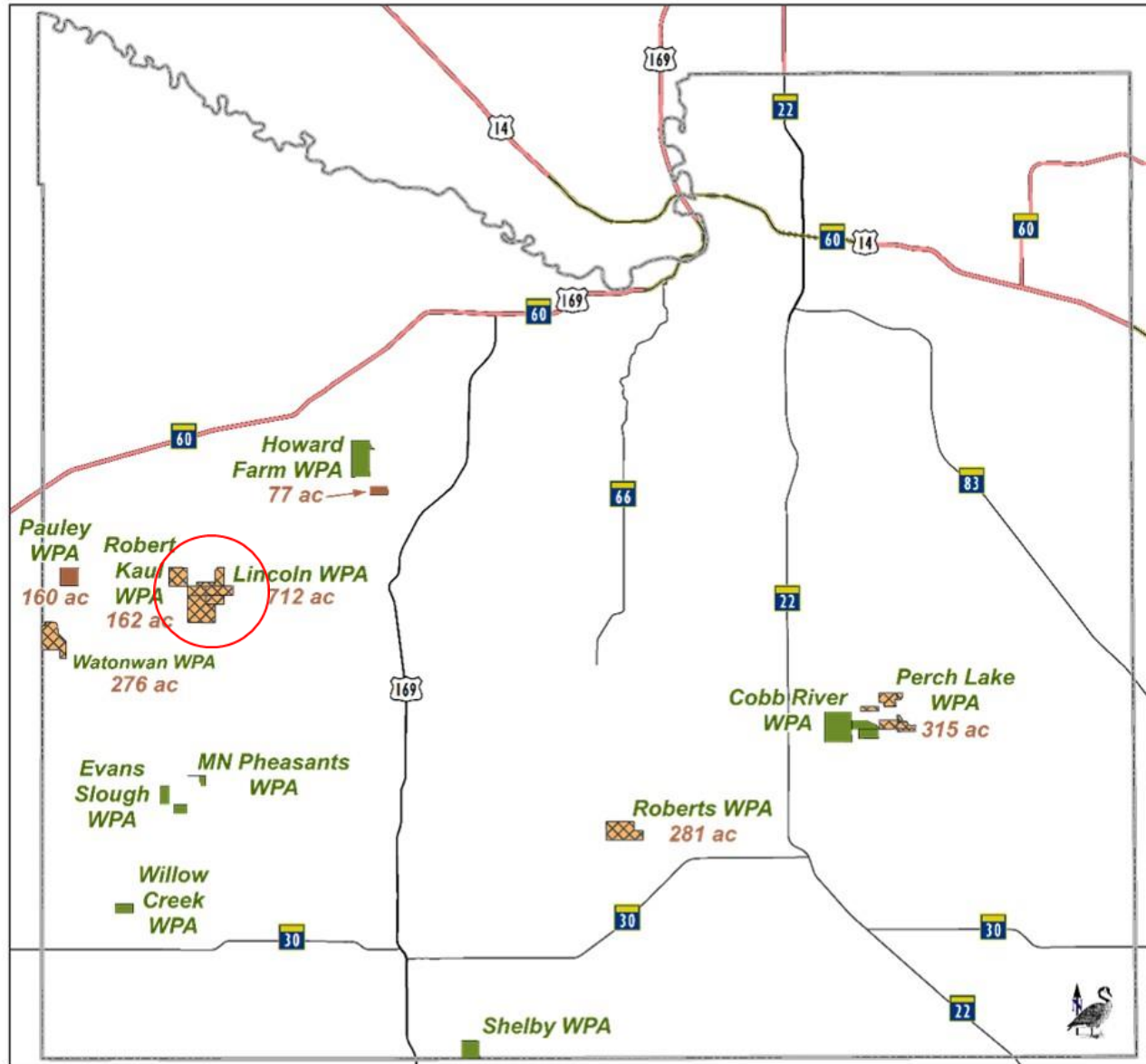
What are your impressions?

Would you do something differently?

How does it relate to your experience?

Acquisition and Restoration Projects

Lincoln WPA Example

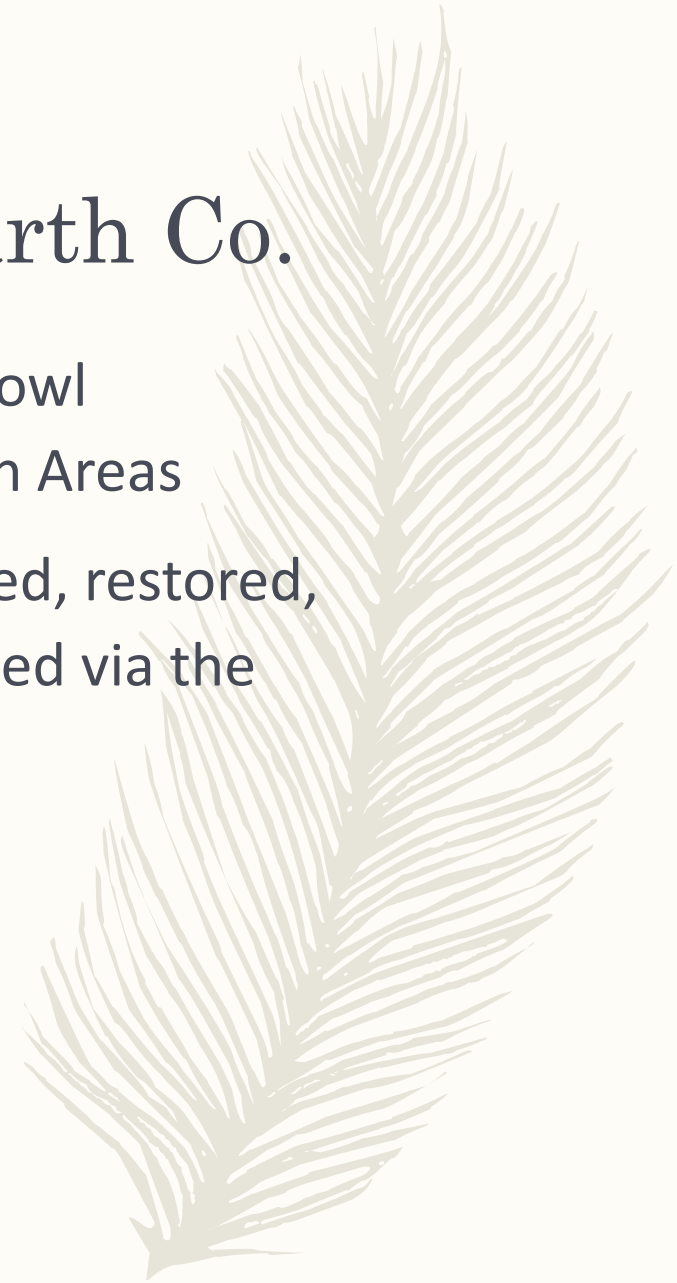


■ USFWS ■ Minnesota Valley Lands (MVL) ▨ MVL Donations to USFWS

0 1 2 3 4 5 miles

Blue Earth Co.

- 12 Waterfowl Production Areas
- 5 Purchased, restored, and donated via the Trust







T-101

T-100

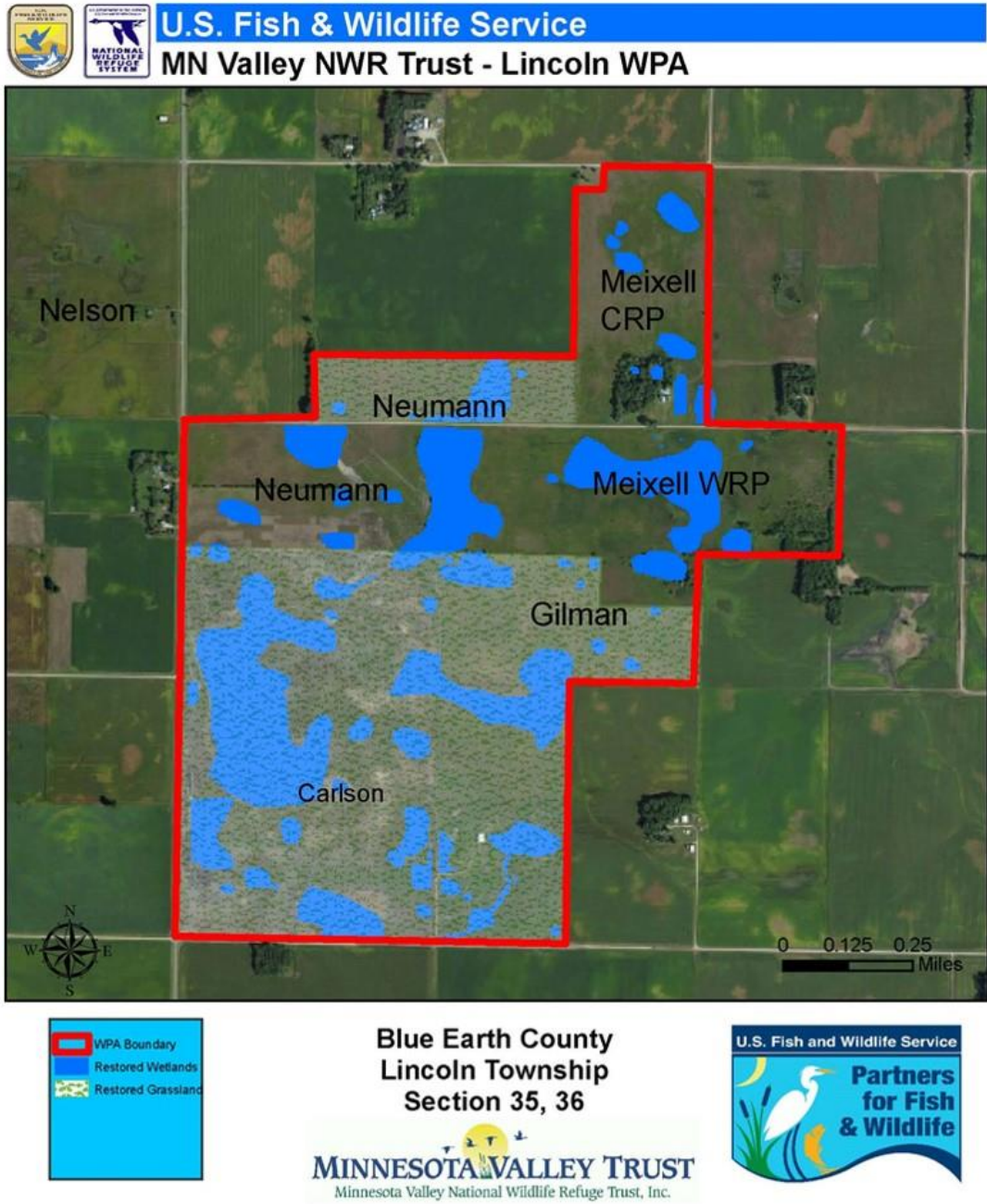
County Rd 32

164th St

© SPOT IMAGE
© 2012 Europa Technologies

© 2012 Google

Google earth



Habitat

>620 acres restored since 2011
80 wetlands totaling 160 acres
70 acre brood basin supports >
15 waterfowl broods now
500+ acres upland planted to
diverse prairie

Benefits

Over 10,000 birds migrate
through
Many rare plant and animal
species
Good for water quality
 Head of 2 County ditch
 systems
Local use and increase in
landowner interest
Ecotourism
Many Studies being undertaken
Monarchs, pollinators,
grassland birds, waterfowl,
seed mixes

The Trust and Managing
By Network Lesson
Connections



Lessons from MbN

- 4Rs: Recognize, Respond, Resolve, Reflect
- Succession Planning and Management
- Collaborative Leadership
- Shared Goals and Priorities
- Partner Life Cycle
 - Partner Cultures, Goals, Hierarchy



Questions

