



United States Department of Agriculture

Oak SILVAH Partnership

Creating a community of practice to sustain forests



Forest Service
Northern Research Station

Barbara McGuinness
Environmental Literacy Coordinator
Northern Research Station

A little history...

- Before European settlement, the forests of the Allegheny Plateau were predominately Eastern hemlock and American beech



A little history...

- By the 1930s, almost all of these forests had been clearcut at least once, dramatically changing the composition of our forests



A little history...

- In the 1960s, when forest industry began cutting second growth forests, they found the forests would not regenerate

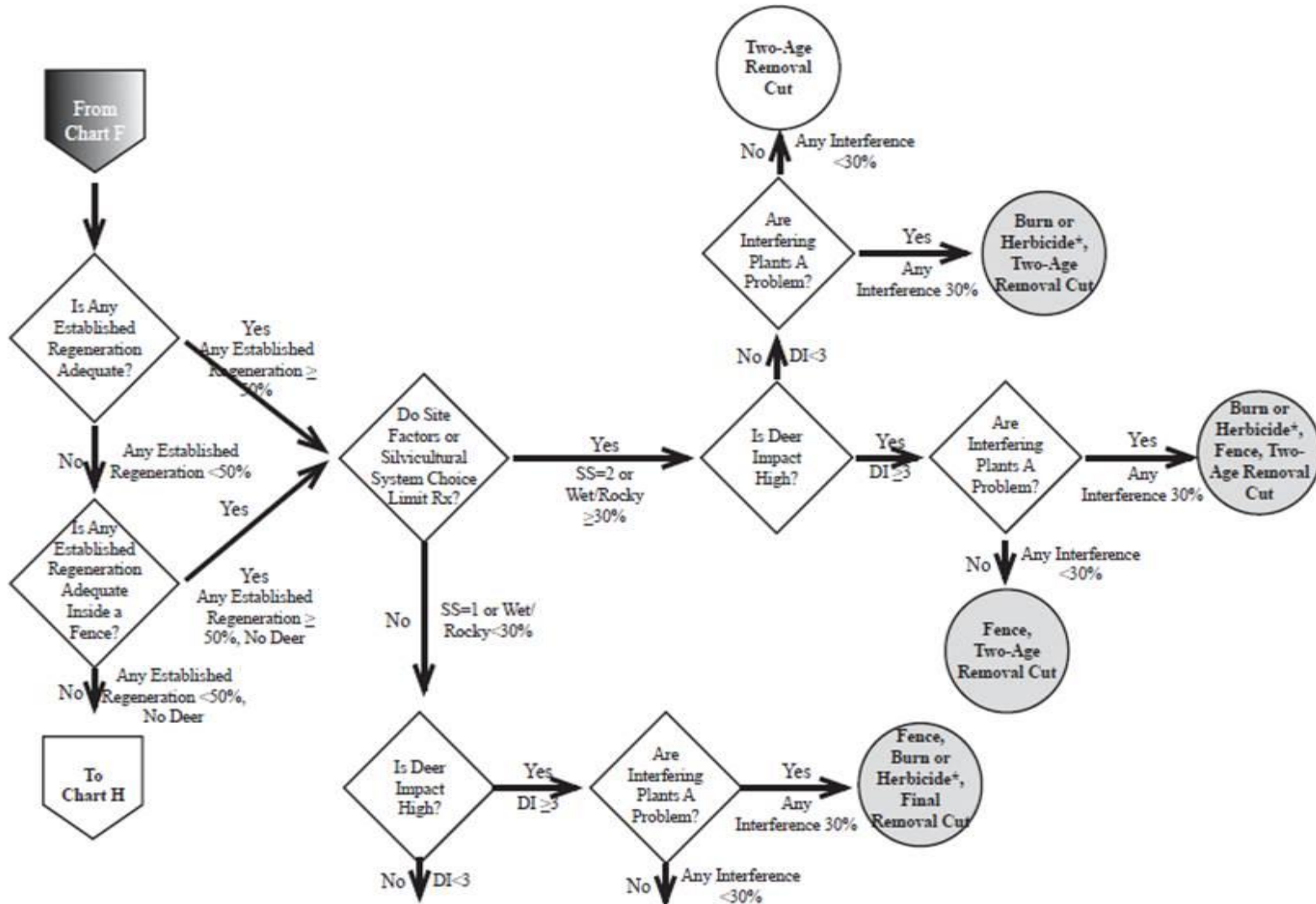


Research to meet a need

- PSU Cooperative Extension
- Northeastern Forest Research Station
- Hammermill Paper Company
- Kane Hardwood



Chart G. Mixed Oak – Releasing Oak Regeneration





United States Department of Agriculture



Forest Service
Northern Research Station





United States Department of Agriculture

What is SILVAH?

- *SIL*viculture of
Allegheny
Hardwoods



Forest Service
Northern Research Station

SILVAH is:

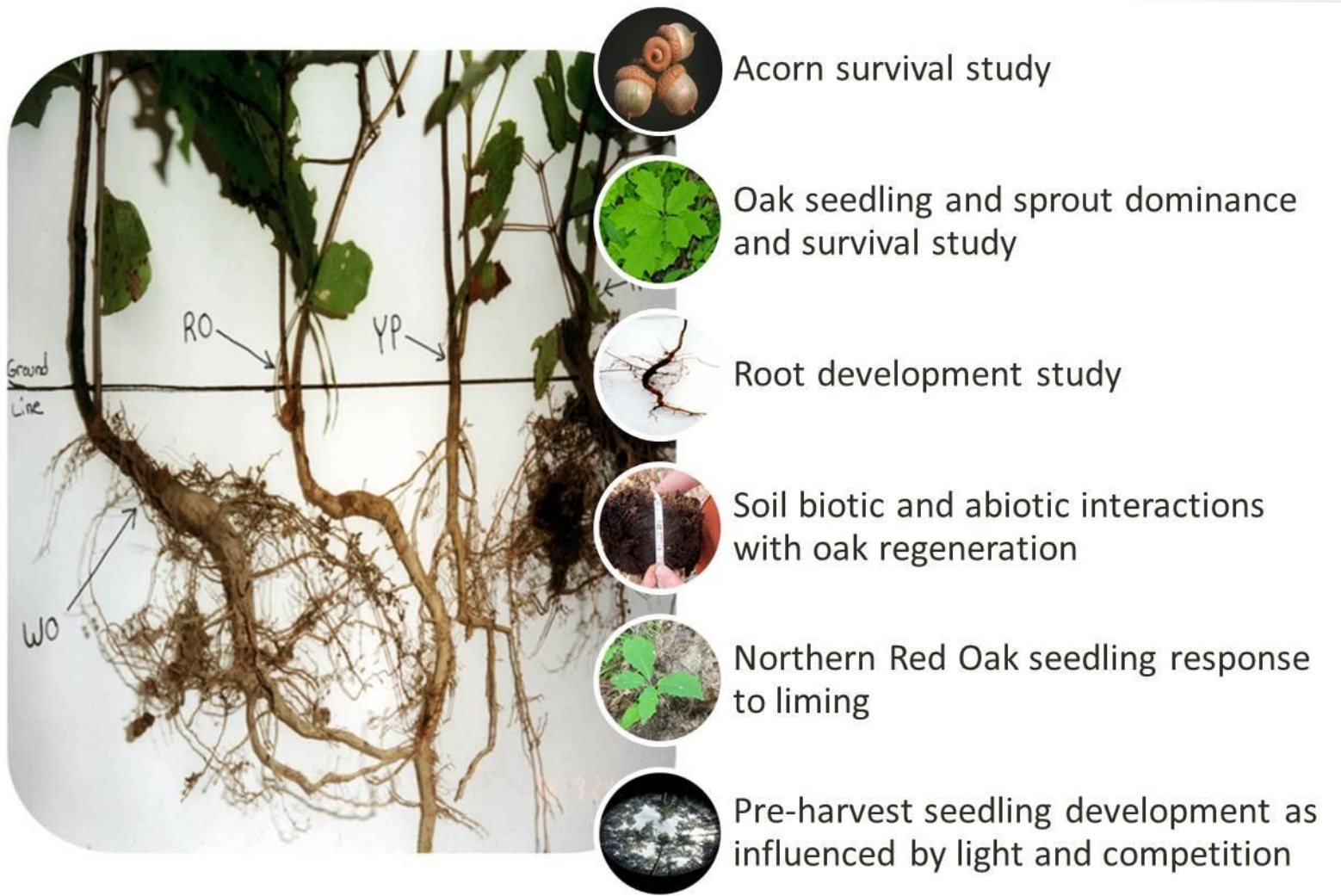
- *A collection of research*
- *Systematic guidelines for inventory, analysis, and prescription*
- *Professional training*
- *A computer program*



Oak SILVAH

- *Initiated by the Pennsylvania Bureau of Forestry*
- *Draws on research from a broader geographic region*
- *90+ BOF foresters and others beta-tested the new inventory techniques*





A new suite of research to fill the gaps, relating to oak ecology...



Development of regeneration
in two-age stands



Mountain laurel study



Fire behavior/Fuel models



Herbicide-burn study



Treatment effectiveness of
Oust

and management.



United States Department of Agriculture

Creating a community of practice

- *A common vocabulary*
- *A systematic framework*



Forest Service
Northern Research Station



United States Department of Agriculture

Our primary partners

- *Pennsylvania Department of Conservation and Natural Resources – Bureau of Forestry*
- *Pennsylvania Game Commission*
- *The Pennsylvania State University*
- *Jefferson County Conservation District*
- *Ohio Department of Natural Resources – Division of Forestry and Wildlife*
- *Ohio State University*
- *Maryland Department of Natural Resources*
- *Garrett County Forestry Board*
- *West Virginia Forestry Association*
- *The Nature Conservancy*
- *USFS Eastern Region*



Forest Service
Northern Research Station



United States Department of Agriculture

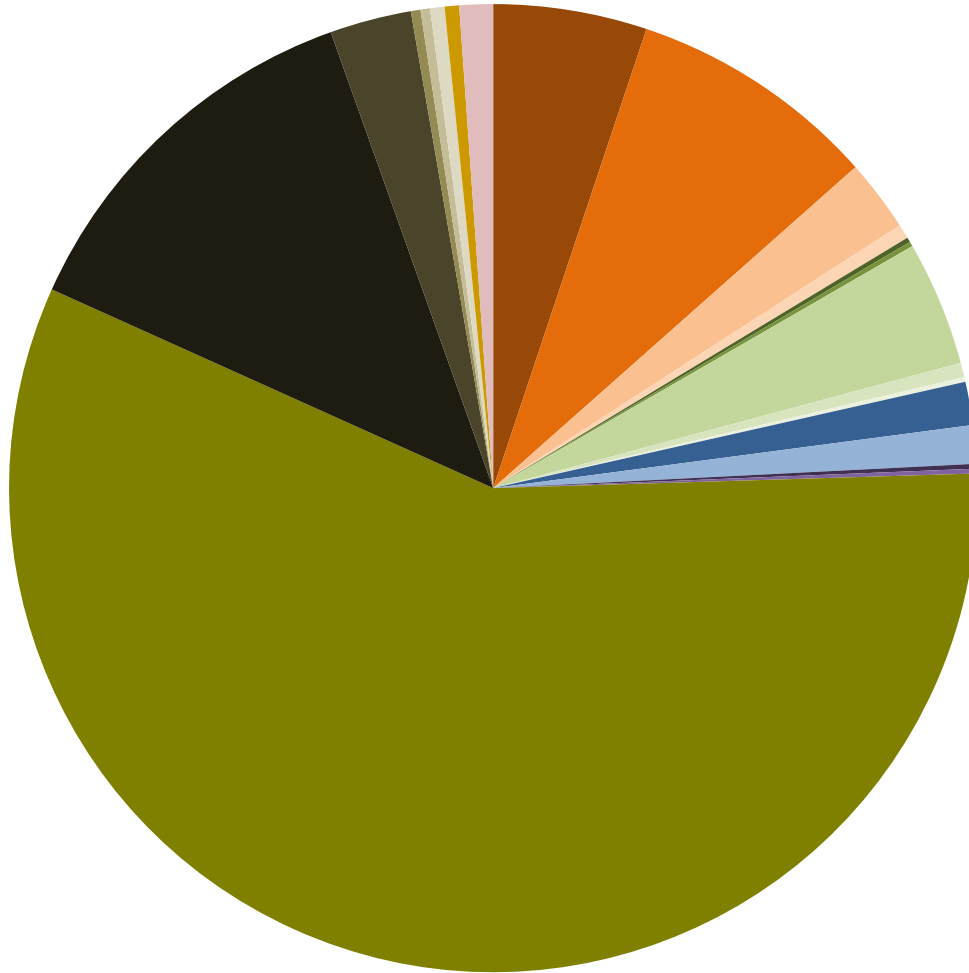


Forest Service
Northern Research Station

Oak SILVAH Participants by Session



United States Department of Agriculture



- Consultant
- Forest Industry
- TIMO
- Energy Co
- Other
- K-12
- Community College
- College/University
- Coop Ext
- EE Center
- Local Conservancy
- Regional Conservancy
- State Conservancy
- National Conservancy
- Research Nonprofit
- Forestry Association
- Other Nonprofit
- Local Government
- State GOV
- FS R9
- FS NRS
- FS NA
- FS Enterprise Team
- Other Fed
- DOD
- Other



Forest Service
Northern Research Station

Oak SILVAH Participants by Affiliation

Our partners benefit



Forest Service
Northern Research Station

**Managers can show their choices are based
on the latest scientific information available**

Our partners benefit



Forest Service
Northern Research Station

Research focused on emerging problems

Our partners benefit



Forest Service
Northern Research Station

Network of land managers

The agency benefits



Forest Service
Northern Research Station

Increased scale and scope of observations

The agency benefits



Forest Service
Northern Research Station

Feedback on high priority problems

The agency benefits



Forest Service
Northern Research Station

**Increased opportunity for treatments
across land ownerships**

The agency benefits



Forest Service
Northern Research Station

Early adoption of research



United States Department of Agriculture

Best practices: Research

- Open lines of communication between scientists and land managers
- Periodic face-to-face meetings to brainstorm and discuss emerging needs



Forest Service
Northern Research Station



United States Department of Agriculture

Best practices: Training sessions

- Ensure a mix of agencies and organizations at every training session and in each crew to facilitate networking and communication
- Breaks and a shared meal build connections
- At least a 50/50 split of lecture and field time
- Scientists participate throughout the week
- Shared contact lists (faculty and participants)



Forest Service
Northern Research Station



United States Department of Agriculture

“SILVAH provides a tool; that makes it very easy for everyone from entry-level to seasoned foresters to enter data and get a reasonable prescription for silviculture treatment. It’s a tremendously worthwhile tool, they are solving real problems.”



— Jim Grace, former Maurice K Goddard Chair in Forestry and Environmental Resource Conservation at Penn State University; Pennsylvania State Forester; and Assistant Secretary of Pennsylvania Department of Conservation and Natural Resources



Forest Service
Northern Research Station



United States Department of Agriculture

Questions?



Forest Service
Northern Research Station



United States Department of Agriculture

The U.S. Department of Agriculture (USDA) prohibits discrimination in all its programs and activities on the basis of race, color, national origin, age, disability, and where applicable, sex, marital status, familial status, parental status, religion, sexual orientation, genetic information, political beliefs, reprisal, or because all or part of an individual's income is derived from any public assistance program. (Not all prohibited bases apply to all programs.) Persons with disabilities who require alternative means for communication of program information (Braille, large print, audiotape, etc.) should contact USDA's TARGET Center at (202) 720-2600 (voice and TDD). To file a complaint of discrimination, write USDA, Director, Office of Civil Rights, 1400 Independence Avenue, S.W., Washington, D.C. 20250-9410, or call (800) 795-3272 (voice) or (202) 720-6382 (TDD). USDA is an equal opportunity provider and employer.



Forest Service
Northern Research Station