

Community Based Partnerships



**Aron Flanders, Kansas Partners for Fish & Wildlife Program,
U.S. Fish & Wildlife Service**

Aron_Flanders@fws.gov <http://www.fws.gov/mountain-prairie/pfw/kansas/>



To efficiently achieve **voluntary** habitat restoration on **private lands**, through financial and technical assistance for the benefit of Federal Trust Species- support FWS mission



Conserve habitat Broaden and strengthen partnerships Improve communication
Enhance our workforce Increase accountability
Provide conservation leadership Encourage public understanding and participation

What % of time or how important is your work with private landowners?

0%

50%

100%

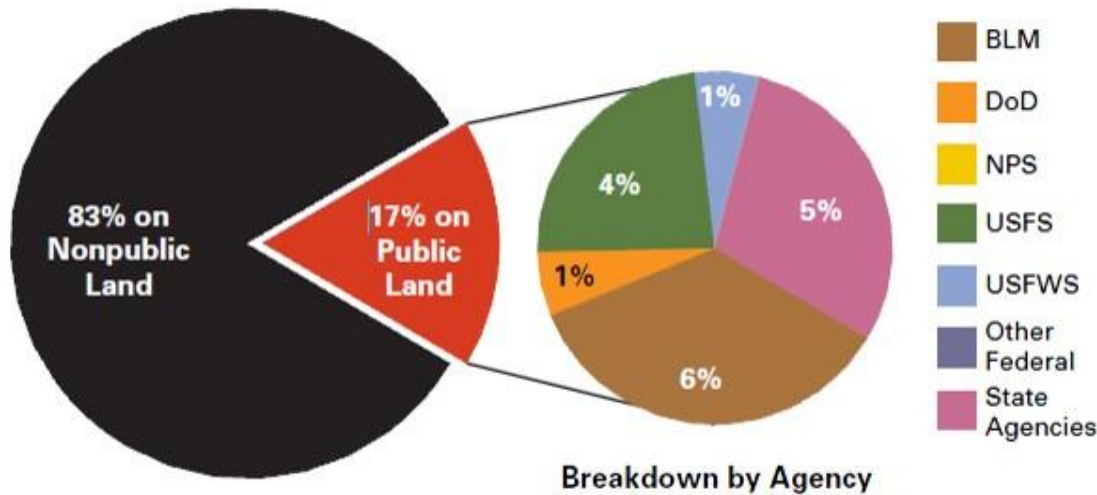


Why work with private landowners?



> 2/3 of the nation's threatened and endangered species use habitat found on private land

Grassland Bird Distribution



Percentage of the U.S. distribution of 29 grassland-breeding bird species on public vs. nonpublic lands (left). Breakdown of bird distribution on public lands shown for each public agency (right).



The State of the Birds 2013 Report on Private Lands, USA

Challenges

How do we engage private landowners?

What are barriers to adopting conservation measures?

How do we leverage resources to support private land conservation?



Challenges

- Lesser Prairie-Chicken ESA Listing – March 27 2014.
- Approximately 95% of population relies on private land



In the media...

.....Lesser prairie-chicken listing harmful to economy

..... **state seeks
passage of bill excluding
rare bird from federal
protection**

Our View: Playing chicken
The Joplin Globe

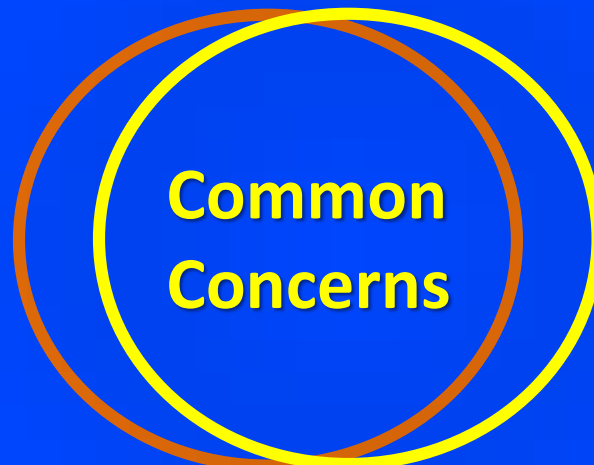
Prairie nightmare
Hutchnews.com

“Chicken conservation plan likened to mafia extortion”

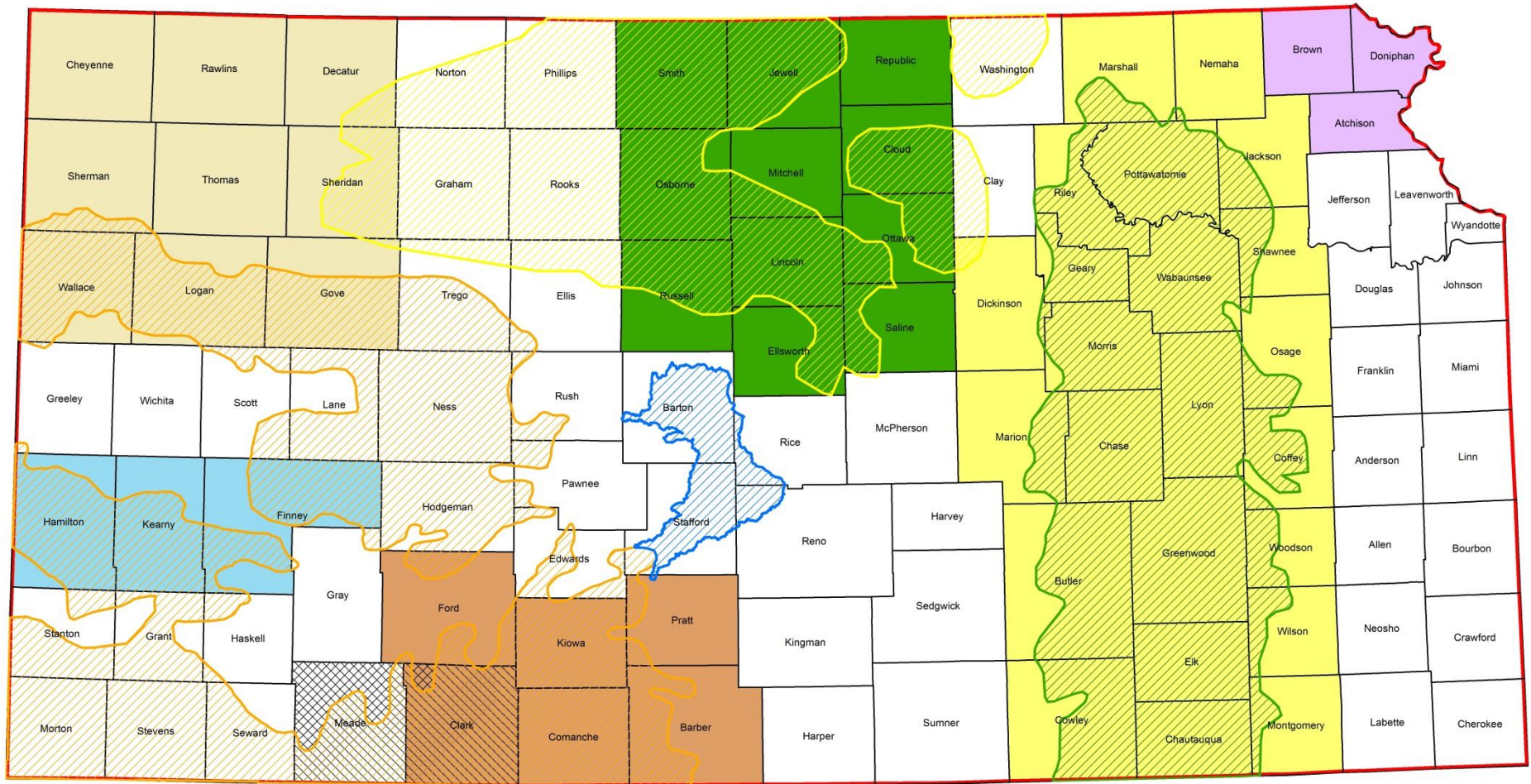
Partnerships are key



Mission – To regenerate Kansas grazing land resources through cooperative management, economics, ecology, production, education, and technical assistance programs.



PFW Focus Areas related to KGLC Grazing Groups



Legend

Flint Hills	Kansas Graziers Association (statewide)	Meade and Clark
Central Kansas Wetlands and Prairies	NE Kansas Four Seasons Graziers Association	Smoky Hills Graziers
North Central Kansas Prairies	Upper Arkansas	Comanche Pool
Southwest Kansas Prairies and Playas	Northwest Kansas	TLA



Producers



THE SAMUEL ROBERTS NOBLE FOUNDATION



Comanche Pool Prairie Resource Foundation

Landowner Driven



**Comanche
Pool Prairie
Resource
Foundation**



501(c)(3) - funding opportunities

Nonprofits – faster “boots on the ground”, private capital, travel

Foundations, Industry - networks, research, outreach

Academic, Joint Venture, Subject Matter Expertize - scientific guidance on projects, research, a draw for outreach

State and Federal Agency - conservation delivery, funding, policy, permits, technical guidance

Partnerships add flexibility from unique abilities

Challenging our way of thinking

R
e
l
e
v
a
n
c
e

M
e
s
s
a
g
i
n
g

Addressing Challenges

Partners engage communities and contribute to....

Coffee Shop Meetings

Platform to highlight common ground

Range Schools

Learning opportunities

How to engage landowners?

**Field Days,
Individual Site
Visits, Neighbors**

In the Element

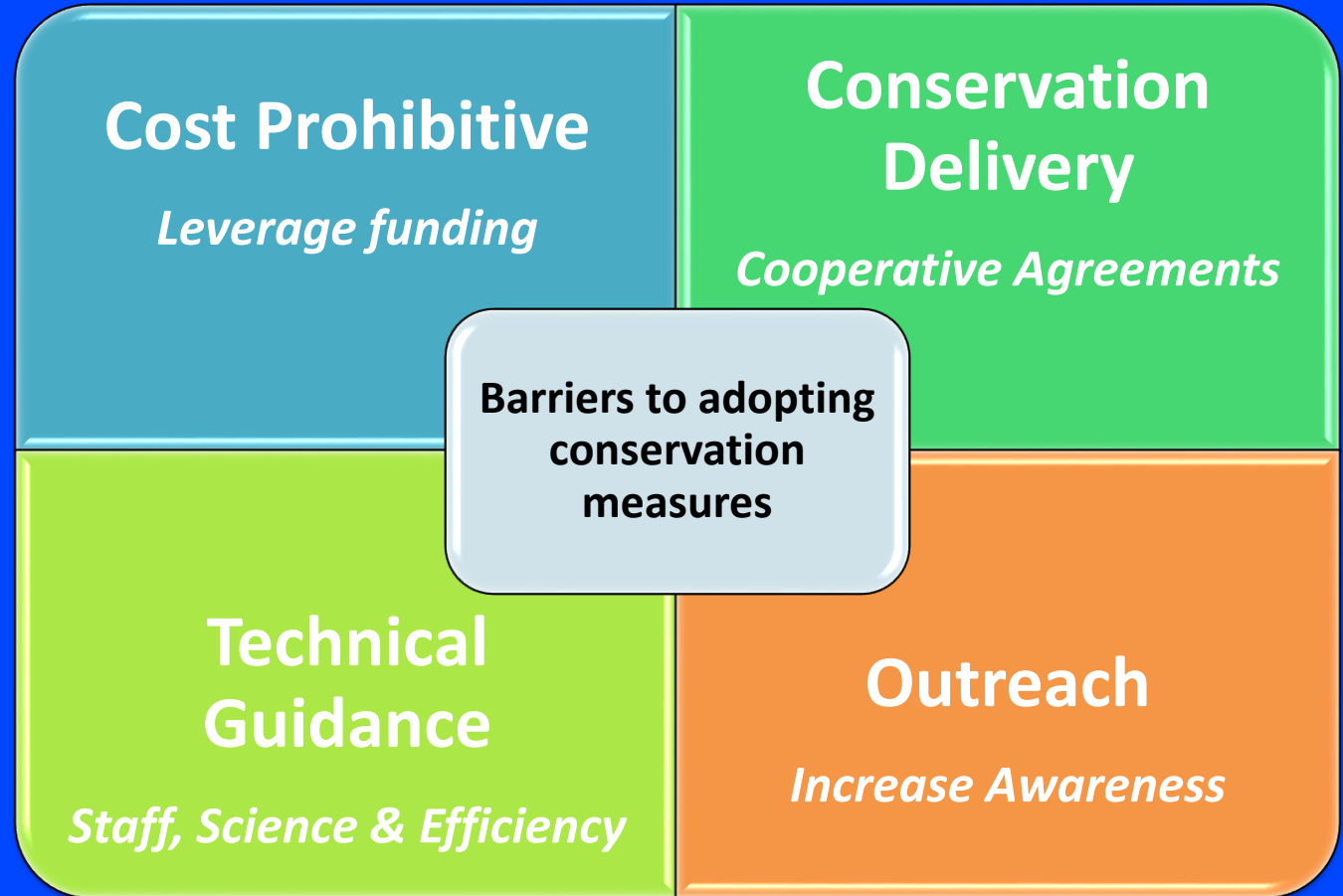
Workshops

Working together



Addressing Challenges

Partners break down the barriers by....

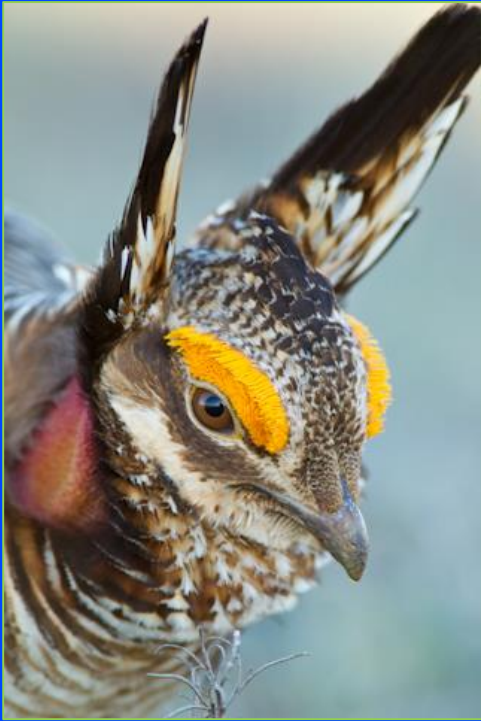


Addressing Challenges

Partners leverage resources by



Addressing the challenges



Noppadol Paothong

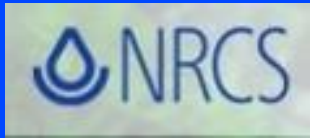
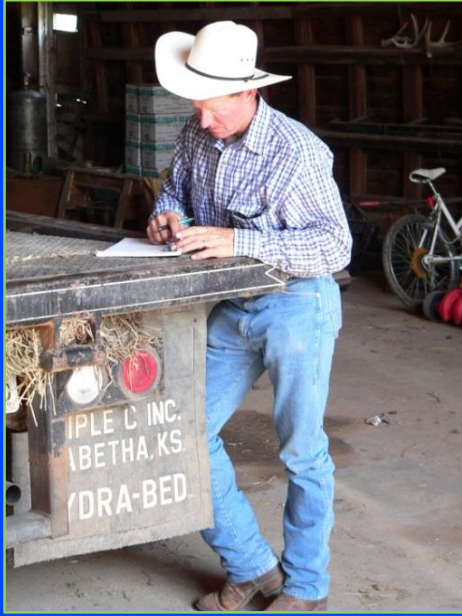


ESA Listing

- Pre-existing community-based partnerships and relationships
- Common ground benefits of LPC conservation and ranching - outreach
- Opportunities instead of threats
- Assurances

EXAMPLE of Community Based Partnerships:

From the ranch, to the coffee shop, to the international stage



Setting the Stage



COOPERATIVE AGREEMENT
Coalition of partners

S
t
a
f
f

Networking
Capital items

Common ground – Team identity – Trust - Open- Landowner driven – Results - Flexibility

Common ground – Team identity – Trust - Open- Landowner driven – Results - Flexibility

2014 KGLC CEC PFW Demonstration Projects:

- 6 on-the-ground, private land conservation projects
- 79% outside matching contributions
- Approximately 14,000 upland acres, 62 wetland acres, 45 stream miles



North American Grasslands Ranch Tour:

Hosted ranchers from Canada, Mexico, Argentina and held an international steering committee meeting



- Share experiences from projects in central grasslands of the U.S., Canada, and Mexico
- Strategize on ways to increase uptake of beneficial practices throughout North America

Developed online Beneficial Management Practices tool in 3 languages

MANAGEMENT PRACTICES

BENEFICIAL MANAGEMENT PRACTICES

- Community Management
- Ecosystem Management
- Grass/Pasture Management
- Grazing Management
- Invasive Species and Pest Management
- Sustainable Economic Management
- Sustainable Energy Management
- Water Resource Management

LOCAL BENEFICIAL MANAGEMENT PRACTICES

REGIONAL BENEFICIAL MANAGEMENT PRACTICES

FEATURED STORIES

- Alexander Ranch Sun City, Kansas
- Della Ranches Box Country, Utah
- Field Grove Ranch Buffalo, Wyoming

OVERARCHING PRACTICES

- Engage urban and rural society
- Empower current and future stewards of the land

WHAT'S NEW

North American Grasslands Alliance
A Framework for Change



PRATIQUES DE GESTION BÉNÉFIQUES

- Gestion communautaire
- Gestion des écosystèmes
- Gestion des espèces envahissantes
- Gestion des prairies/pâturages
- Gestion des ressources hydriques
- Gestion du brouillage
- Gestion économique durable
- Gestion énergétique durable

EN VEDETTE

- Della Ranches, Box Country (Utah)
- Ferme d'élevage Kidd Bro's, Mayerthorpe (Alberta)
- Ferme d'élevage Spirit View, Rycroft (Alberta)
- Ferme d'élevage Weedon, Swift Current (Saskatchewan)
- Ranch Alexander, Sun City (Kansas)

PRATIQUES GÉNÉRALES

- Faire participer les sociétés urbaine et rurale
- Faire participer les intendants des terres, actuels et futurs
- Améliorer la durabilité économique des fermes d'élevage

QUOI DE NEUF?

L'Alliance des prairies d'Amérique du Nord :
Un cadre pour le changement

Auteurs :
Commission de coordination de l'environnement

CATEGORÍAS DE MANEJO

- Manejo centrado en los ecosistemas
- Manejo comunitario
- Manejo de especies invasoras y plagas
- Manejo de pasturas
- Manejo de recursos hídricos
- Manejo del pastoreo
- Manejo económico sustentable
- Manejo sustentable de la energía

CASOS DESTACADOS

- Della Ranches, Box Country, Utah
- Rancho Alexander, Sun City, Kansas

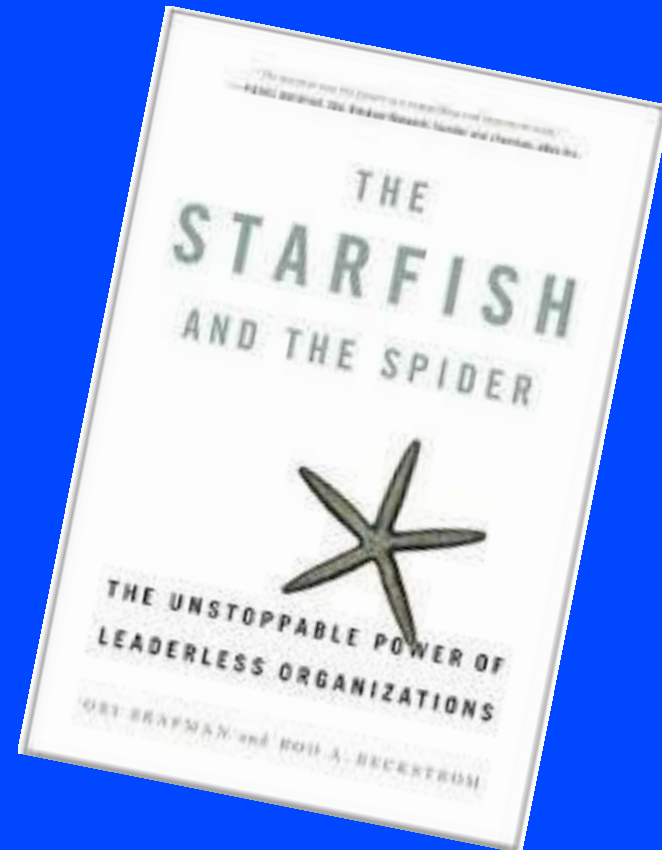
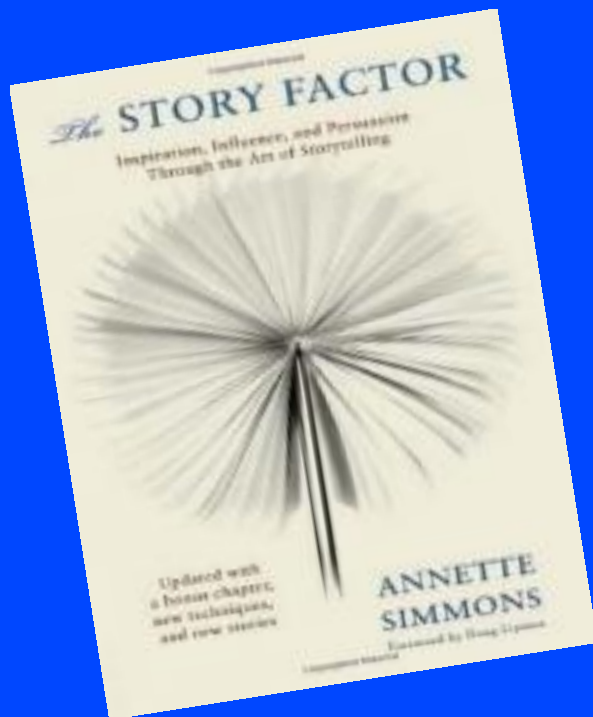
PRÁCTICAS INTEGRALES

¿QUÉ HAY DE NUEVO?

Increasing landowner adoption of beneficial practices



Lessons Learned



Lessons Learned

- Be part of the community
- Take time to develop relationships – go slow to go fast. Moving too fast is like pushing a rope
- Move at the speed of landowner
- Listen & ask questions
- Partner goals are a priority
- Make sure they have skin in the game



Lessons Learned

- A doctor has to see sick patients
- Communicate
- Respect privacy
- Give them credit
- Seek champions
- Plant the seed & let it be their decision.



Partnering together to accomplish more than any one could individually. Common-ground goals & concerns, shared resources & stewardship, community collaboration & innovation

