

National Park Service
U.S. Department of the Interior
Rivers, Trails, and Conservation Assistance program



Natural Partners

The National Park Service and
the American Society of Landscape Architects:
Community Assistance Partnership

EXPERIENCE YOUR AMERICA

Natural Partners: NPS & ASLA

Overview

- Introduce partners: NPS & ASLA
- Purpose of the partnership
- How we partner
- Showcase successes
- Benefits of the partnership
- Challenges and best practices
- End notes

Working With Communities: NPS

The National Park Service “. . . cooperates with partners to extend the benefits of natural and cultural resource conservation and outdoor recreation throughout this country and the world.”



Working With Communities: NPS



Rivers, Trails, & Conservation Assistance program

EXPERIENCE YOUR AMERICA

Working With Communities: ASLA

“ . . . to lead, to educate, and to participate in the careful stewardship, wise planning, and artful design of our cultural and natural environments.”

American Society of Landscape Architects



Central Park, New York: photo by Miguel Ariel Contreras Drake-McLaughlin

NPS & ASLA: Natural Partners

The National Park Service and ASLA share values:

- good planning and artful design
- supporting public health and safety
- celebrating culture
- conservation and stewardship
- nature and natural systems
- feeding the soul
- working with underserved communities
- meaningfully engaging all in the design process

NPS & ASLA: Natural Partners

- Formally partnered in 2000 to help communities plan, design, and manage their natural, cultural, and recreational resources
- Not a financial relationship
- Relies on individual initiative of NPS staff, chapter leaders, & ASLA volunteers
- Approximately 50 projects to date



How Do We Partner?

- Every project is unique
- Select projects and tailor ASLA's role to fit strategic goals, capacity, geography and needs of communities
- Many different ways and levels of engagement

How Do We Partner?

Design Charrettes:
intensive, illustrated brainstorming workshops

- Multi-day design charrettes
- Mini design charrettes

How Do We Partner?

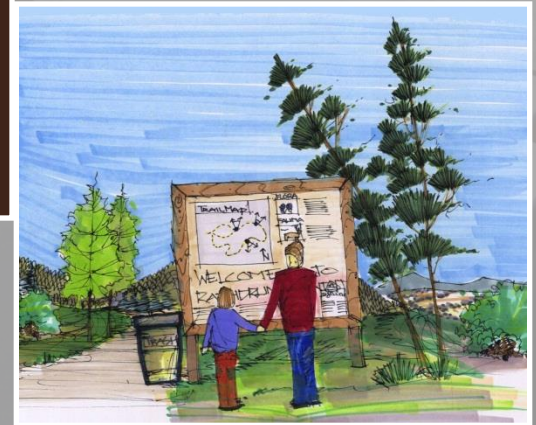
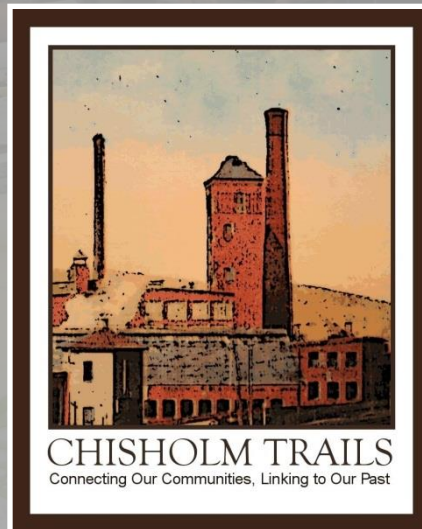
- Concept and master plans
- Site improvement and management plans
- Illustrations to promote community engagement and understanding



EXPERIENCE YOUR AMERICA

How Do We Partner?

- Site tours and surveys
- Logo and signage design



How Do We Partner?

- Educational programs to engage communities, especially youth

Successes

Naknek Sockeye Run Fitness Trail and Bike Path – *Naknek, Alaska*

- Multiple-year project, ribbon cutting in 2012
- Partnered with ASLA Alaska
- Focus on benefits for Youth and Health
- Create Safe Routes to School

Successes



Naknek, Alaska



EXPERIENCE YOUR AMERICA

Successes



Naknek, Alaska

EXPERIENCE YOUR AMERICA

Successes

Barber Pool Conservation Area Interpretive Trail: Youth Engaged in Planning - *Boise, Idaho*

- Classroom to boardroom in three months
- Engaged in multiple workshops
- Students from three schools participated
- Balancing conservation with recreation
- Partnered with ASLA Idaho-Montana
- Featured “Landscape Architecture Month” activity

Successes

Boise, Idaho

EXPERIENCE YOUR AMERICA



Successes

Barber Pool Conservation Area Interpretive Trail Youth Engaged in Planning

David C. Tripodi
Idaho Department of Parks and Recreation
Idaho Shakespeare Festival
Sublettone International School

Project Goals:

- Develop an interpretive trail that connects the Barber Pool Conservation Area to the surrounding community.
- Provide an educational experience for youth and the general public.
- Enhance the interpretive trail's accessibility for all users.

Youth Participants:

- Michael & Matthew Jones
- Jonathan & Andrew Johnson
- Max & Sam Beggs
- Patrick & Taylor Bess
- Lucy & Eli Dyer
- Julian & Taylor
- Max & Christopher
- Michael & Kaitlyn

Project Partners:

- National Park Service, Trails & Conservation Assistance Program



Boise, Idaho

Benefits of Partnership: NPS

- Enhances the National Park Service's capacity

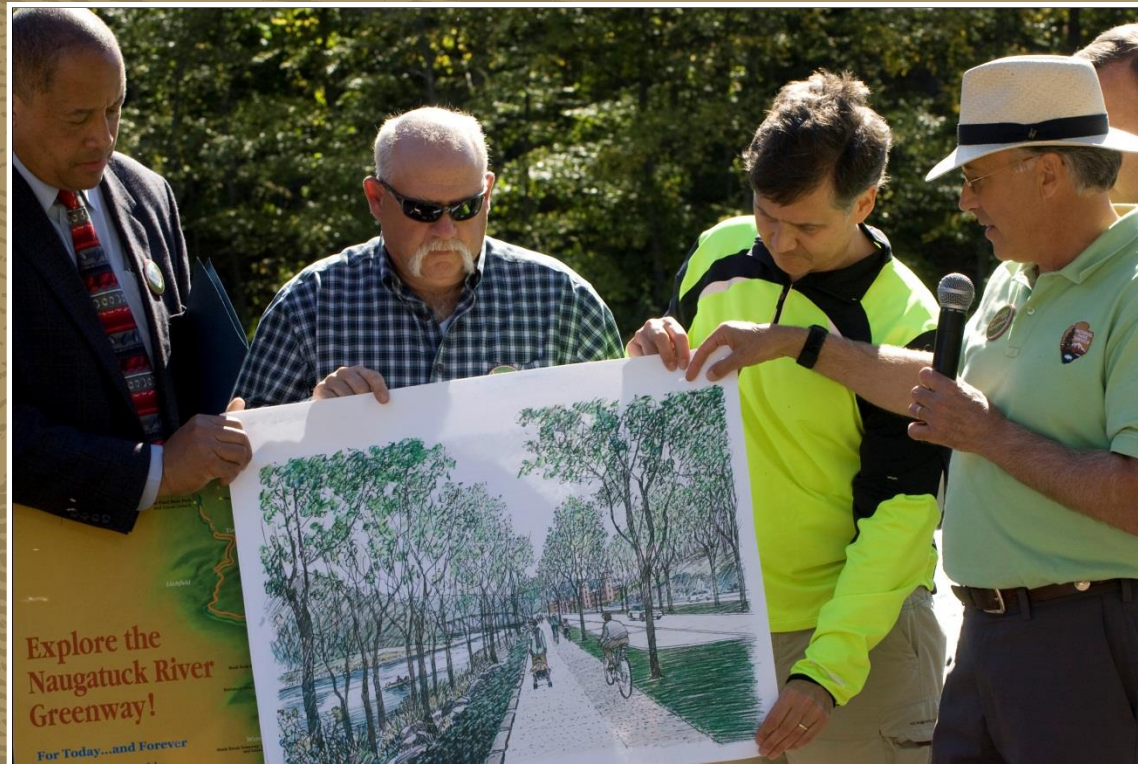


Benefits of Partnership: ASLA

- Increases public awareness of landscape architecture
- Provides ASLA community service opportunities
- Educates and mentors future landscape architects - students, young professionals, youth

Benefits of Partnership: ASLA

- Pro bono ASLA service leads to future paid work for landscape architects
- Service develops field and culture of design



Benefits of Partnership: Communities

- Serves communities who may not get design expertise without the National Park Service and ASLA because of funding or politics

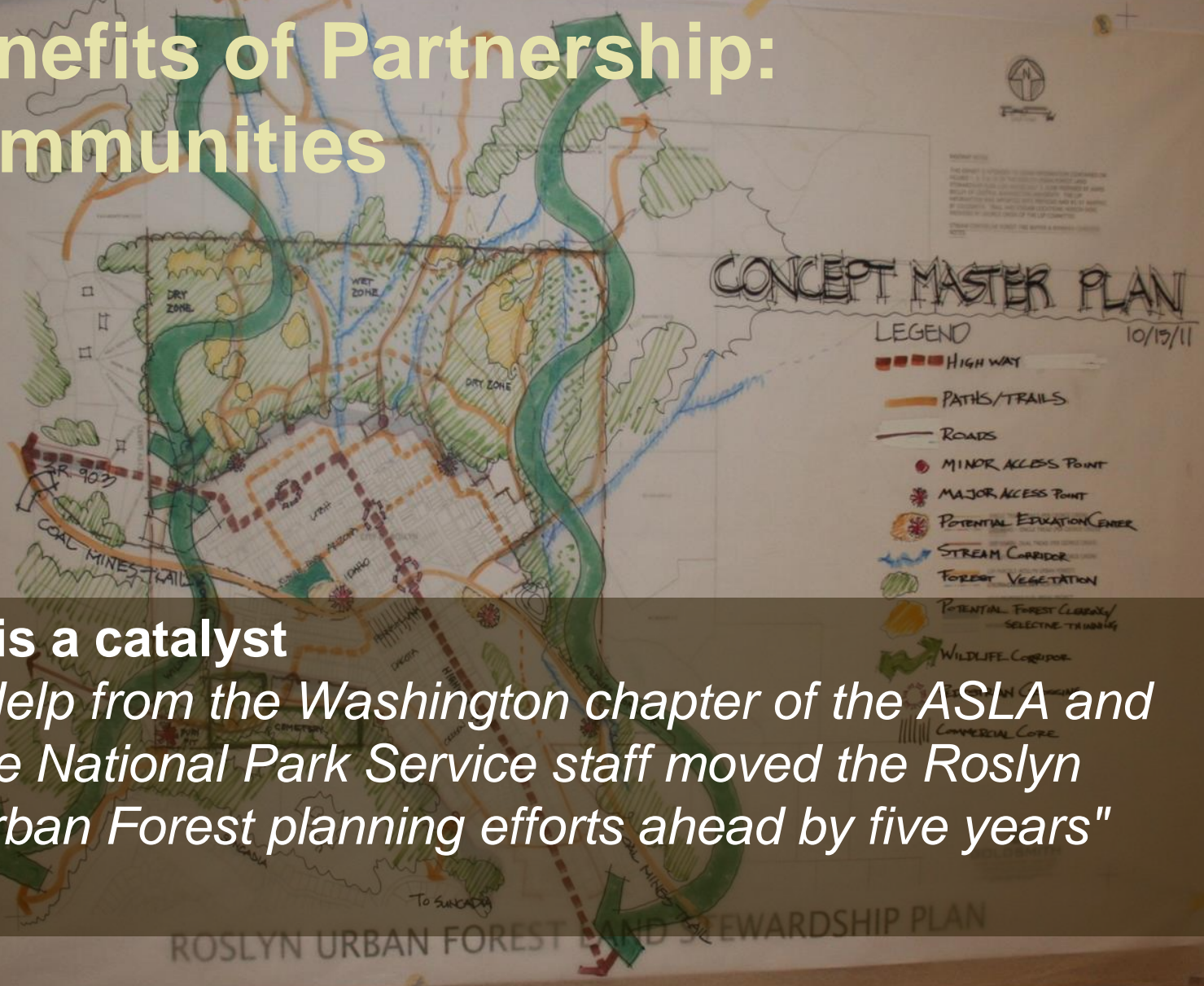


Before



After

Benefits of Partnership: Communities



- **It is a catalyst**
"Help from the Washington chapter of the ASLA and the National Park Service staff moved the Roslyn Urban Forest planning efforts ahead by five years"

ROSLYN URBAN FOREST AND STEWARDSHIP PLAN



■ It's fun working with other colleagues, chapters and partners to transform communities!

EXPERIENCE YOUR AMERICA

Challenges in Partnering

- NPS-ASLA agreement sanctions and encourages but does not require participation
- ASLA education/promotion of partnership with NPS is limited
- Chapter leadership changes every year or two, with election of officers, making continuity more difficult and maintaining regular communication all the more important

Best Practices in Partnering

- Don't wait to make the “ask” for a project – reach out and establish the local NPS-ASLA partnership
- Understand each other's objectives – and invest in their success as your own
- Stay in touch, maintain dialogue and rapport
- Be flexible
- Celebrate effort and successes

NPS & ASLA: End Notes

- Coordinating on ASLA 2013 public awareness campaign
- NPS deadline: August 1; selected projects still qualify as YPS projects
- Renewal 2015



Rivers, Trails, and Conservation Assistance program

www.nps.gov/rtca

Alexandra Stone

206-220-4108

alex_stone@nps.gov



National Park Service
U.S. Department of the Interior

EXPERIENCE YOUR AMERICA