



Angeles NF Collaborative Transit to Trails (T2T)

Managing by Network Case Study 2024

Ricardo Lopez,
Forest Engineer
ricardo.lopez2@usda.gov



*Angeles National Forest
San Gabriel Mountains
National Monument*

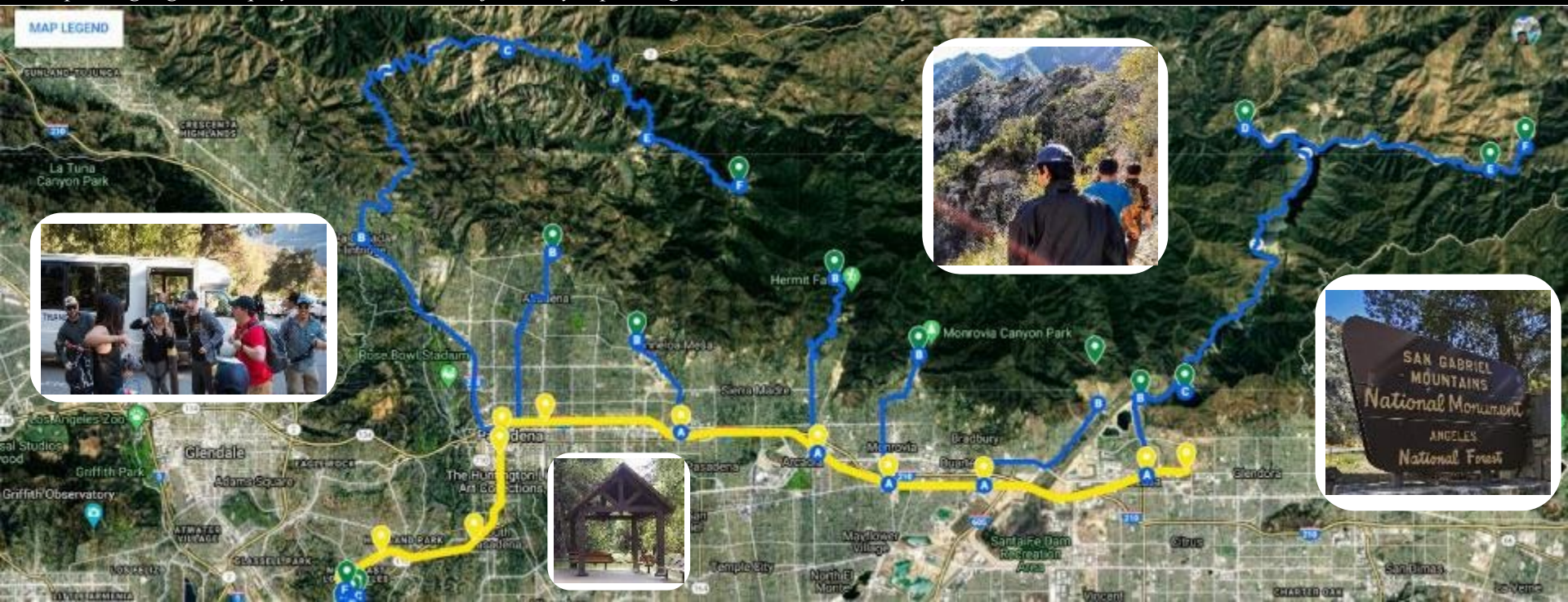


Overview

Angeles NF Collaborative Transit to Trails

1. Urban Forest Interface in Los Angeles County
2. Transit to Trails projects into Forest

Improving regional equity and environmental justice by expanding urban access to healthy outdoor recreation





Angeles NF & Congressional Districts at a Glance





*Angeles National Forest
San Gabriel Mountains National
Monument*

Los Angeles' Urban Forest





Nature's Benefits

Nature's Benefits Angeles National Forest

Nature's Benefits from Your National Forests

The benefits of the National Forest System are many and varied. They include:

- **Recreation:** National Forests provide a wide variety of recreational opportunities for all ages and abilities. From hiking and backpacking to hunting and fishing, there's something for everyone.
- **Wildlife:** National Forests are home to a wide variety of wildlife, including many rare and endangered species.
- **Water:** National Forests provide a significant portion of the water supply for California. The forests help to filter and store water, ensuring a steady supply for cities and towns.
- **Timber:** National Forests provide a source of sustainable timber, which is used for a wide variety of products, from paper to lumber.
- **Jobs:** National Forests provide a source of employment for many people, including rangers, loggers, and maintenance workers.

Do You Know Which National Forests Provide the Most Benefits?

Water is a precious resource, and it's important to know where it comes from. The Angeles National Forest is one of the best places to find clean, fresh water. Here are some of the ways the forest helps:

- **Water Quality:** The forest helps to filter and store water, ensuring it's clean and safe to drink.
- **Water Quantity:** The forest helps to store water in the soil and in streams, ensuring a steady supply throughout the year.
- **Water Conservation:** The forest helps to conserve water by reducing evaporation and runoff.

How Much Water Does the Angeles National Forest Store?

- The forest stores **1.5 billion gallons** of water in its soil and streams.
- The forest stores **1.5 billion gallons** of water in its trees and other vegetation.
- The forest stores **1.5 billion gallons** of water in its snowpack.

Angeles NF - Recreation

- **Over 2.8 million visitors** recreate on the ANF annually
 - 1.6 million people to hike
 - About 270,000 people downhill ski
 - Over 116,000 people camp and backpack

Nature's Benefits WATER

WATER FROM CALIFORNIA NATIONAL FORESTS & ITS BENEFITS

~50% of California's population lives in areas that rely on water from National Forests.

11+ BILLION gallons of water are stored in California's National Forests.

7.5x more water is stored in National Forests than in all California's reservoirs.

17 MILLION gallons of water are used daily in California.

84+ million people live in California.

952 years of water are stored in California's National Forests.

HOW MUCH IS 11 BILLION GALLONS OF WATER WORTH?

- \$3.2 BILLION** - The value of 11 billion gallons of water to California's economy.
- \$367 MILLION** - The value of 11 billion gallons of water to California's agriculture.
- \$583 MILLION** - The value of 11 billion gallons of water to California's cities and towns.

Angeles NF – Local Economy

- **ANF contributes to local economies** via work and opportunities on the Forest
 - **~\$114 million in labor income** for wage earners and local businesses from ANF each year
 - **~1,920 jobs** from ANF projects and employment
 - **~\$61 million spent locally** by recreation visitors





Transportation System

- System roads
 - County
 - State
- Forest Service System Roads
 - Paved
 - Unpaved
- FS System Trails
 - Motorized
 - Non-Motorized
- SGMNM Access Portals
- Public Transportation
- Highways
- Metro Light Rail



Poor Access to Nature: Impacts us all



San Gabriel Mountains Community Collaborative

45-member organization representing wide interests

- Comprised of local governments, NGOs, volunteer organizations, private utility companies, DOT agencies and government partners

- Ad hoc committee groups include:
 - Trails and Recreation
 - Volunteer Engagement
 - Conservation Education
 - **Transportation (such as Transit 2 Trails)**





But First – How Did We Get Here?



President Obama Designation October 10, 2014
The San Gabriel Mountains National Monument is the eighth Forest Service national monument. The Antiquities Act of 1906 grants the President or Congress the authority to designate national monuments in order to protect “objects of historic or scientific interest.”

It’s possible that in 2024, President Biden may designate an additional 109,000 acres to the SGMNM later this year.

USDA United States Department of Agriculture



- The San Gabriel Mountains National Monument is the eighth Forest Service national monument. The Antiquities Act of 1906 grants the President or Congress the authority to designate national monuments in order to protect “objects of historic or scientific interest.”
- Located primarily in the Angeles National Forest, the monument is 346,177 acres. The forest, including the monument, provides 70 percent of the open space to more than 15 million people living within 90 minutes of the area, and provides a third of Los Angeles’ drinking water.
- The mighty San Andreas Fault and other geological forces have shaped these steep and rugged mountains. The highest point in the San Gabriel Mountains is the 10,064-foot Mt. San Antonio, nicknamed Mt. Baldy.
- Deep canyons, many with perennial streams, provide crucial habitat for rare and unique wildlife, including the California condor, spotted owl, bighorn sheep, and 1,000-year-old limber pines.
- The monument is rich with cultural and historic sites. There are more than 600 archeological sites within the monument, including two Native American rock art sites listed on the National Register of Historic Places.
- Science and research have been and continue to be an integral part of the monument. The historic Mt. Wilson Observatory has hosted world-class scientists, including astronomer Edwin Hubble. The San Dimas Experimental Forest provides crucial scientific insights into watersheds and aquatic science.



- The National Monument is the heaviest used area on the Angeles National Forest, which receives more than 4 million visitors per year. This number is expected to increase now that the area has been designated a national monument. Hiking, biking, horseback riding, off-highway vehicle use, fishing, hang-gliding, hunting and picnicking are just a few of the recreational activities on the monument.
- In a region with limited open space, the mountains are the backyard for many highly urban and culturally diverse communities. National monument designation will also vastly enhance recreational access, interpretive and environmental education and bolster already strong partnerships between the Forest Service and neighboring communities.
- The Forest Service mission is to sustain the health, diversity, and productivity of the Nation’s forests and grasslands to meet the needs of present and future generations.

For more info go to <http://go.usa.gov/wccH>



Forest Service National Headquarters

October 2014

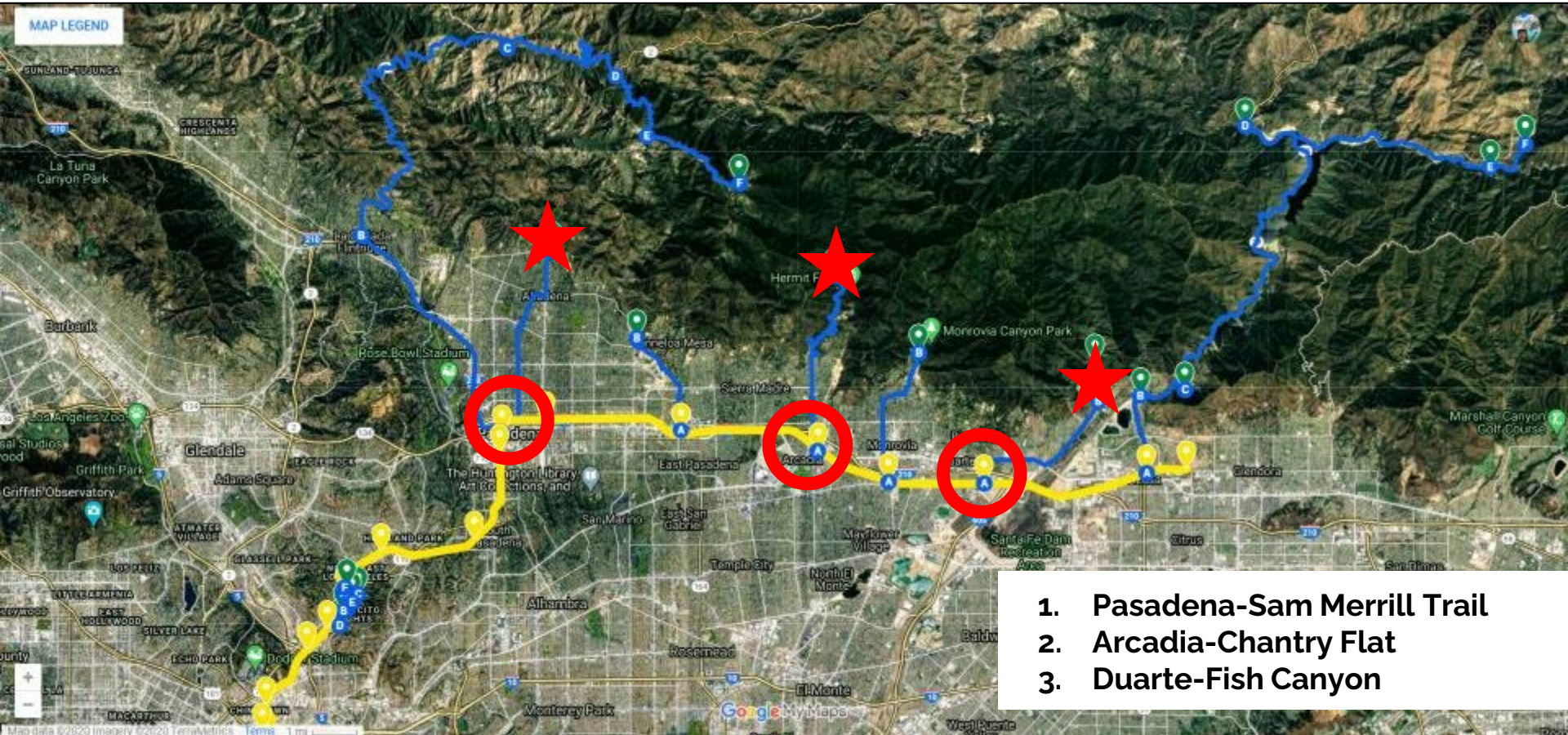


Transit 2 Trails – Working Groups





Successfully Demonstrated Shuttle Pilots





Successfully Demonstrated Shuttle Pilots

Shuttle: Duarte Fish Canyon
Departure: GL Duarte Station
Operator: City of Duarte

- First new T2Trails service to San Gabriel Mountains
- Apr-May 2016, Saturdays
- 7 am-6 pm. Every 30 mins
- Funding: Measure R local return
- Fire damage closed trail; City to explore significant trail restoration. Will resume after.



Shuttle: Pasadena Sam Merrill Trail (Echo Mountain)
Departure: GL Memorial Park Station (Pasadena)
Operator: City of Pasadena

- Echo Mountain & Inspiration Point Trails
- Fall 2018, Frequency: 30 min. Travel time: 23 min
- Partners: 5th District, SoCal Edison, Trust for Public Land, The Wilderness Society.

**Get to the Point!
Your Transportation to Inspiration**

Starting April 11 and into the summer, take Pasadena Transit Route 88 from Memorial Park Gold Line Station to Echo Mountain Inspiration Point Trailhead. Our regular bus will leave from the Gold Line station from 7:00 am - 4:00 pm. Saturdays and Sundays, our bus leaves the Trailhead at 5:00 pm.

Route 88 is a local service. Travel time to the trailhead is 23 minutes.

For more information call 626-794-4365 or visit www.pasadenatransit.com





Chantry Flat Pilot Shuttles



Shuttle: Pilot -Chantry Flat Shuttle 1.0
Departure: GL Arcadia Station
Operator: US Forest Service, (transit contractor)

- Partners: The Wilderness Society, National Forest Foundation, REI
- Date: Sep. 2016, 3 weekends.
- Frequency: 30-45 min.
- Travel time: 25 min, 1-way.

Shuttle: Pilot -Chantry Flat Shuttle 2.0
Departure: GL Arcadia Station
Operator: City of Arcadia, First Transit (contractor)

- Partners: Nature for All, US Forest Service, National Forest Foundation, REI
- Date: Sep. 2019, 1 Saturday
- Frequency: 30-45 min. 3 shuttles.
- Travel time: 25 min, 1-way.





2016 Chantry Shuttle Pilot Project

USDA United States Department of Agriculture

#NextStopOutdoorFun

**Free Trial Shuttle Service
Arcadia to Chantry Flat Picnic Area**

WEEKEND SHUTTLE SCHEDULE

*September 24 - September 25

October 1 - October 2

*October 8 - October 9

Shuttle will run between the Arcadia Metro Gold Line Station beginning 7am - the last shuttle will depart Chantry Flat at 4pm

Shuttles will arrive/depart every 30-45 minutes (estimated)

***SPECIAL EVENTS**
September 24 - National Public Lands Day - Join us for a day of fun and educational activities. Partners will offer hikes, outdoor cooking demonstrations, and other educational activities!
October 2 - 8 AM - 12:30 PM - The Wilderness Society welcomes the public to join a wellness hike to learn about the connection between nature and mental health.

The USDA Forest Service is an equal opportunity employer, service provider, and lender.

Shuttle sponsored by Car-less Calaveras

This free limited pilot project to assess the feasibility of future transportation projects with potential partners and local communities.

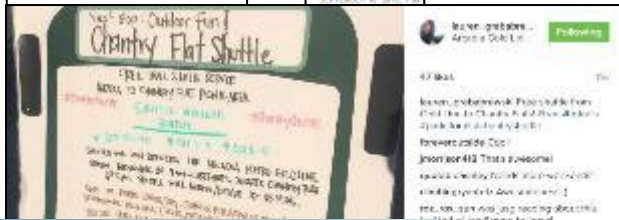
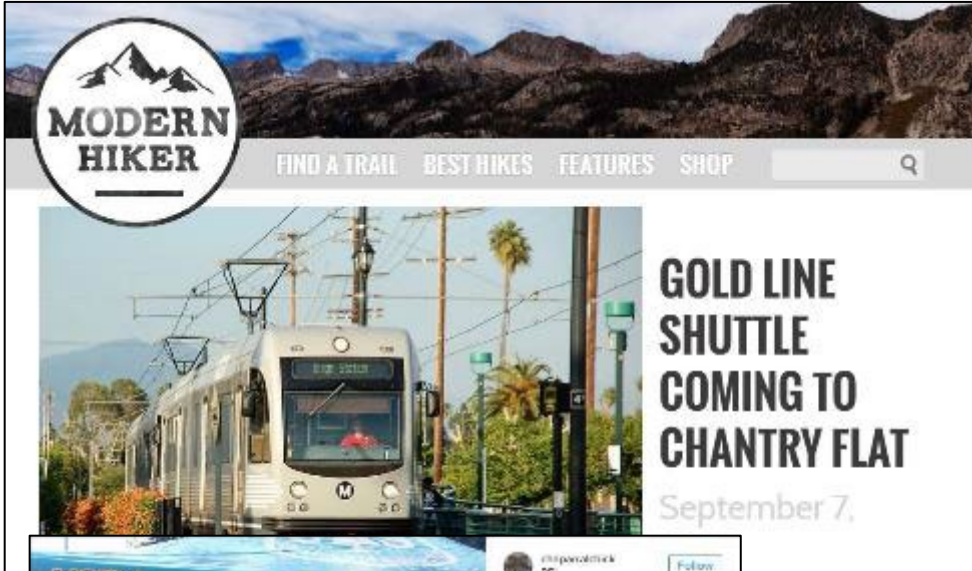
Forest Service Pacific Southwest Region Angeles National Forest San Gabriel Mountains National Monument Chantry Flat





Angeles National Forest San Gabriel Mountains National Monument

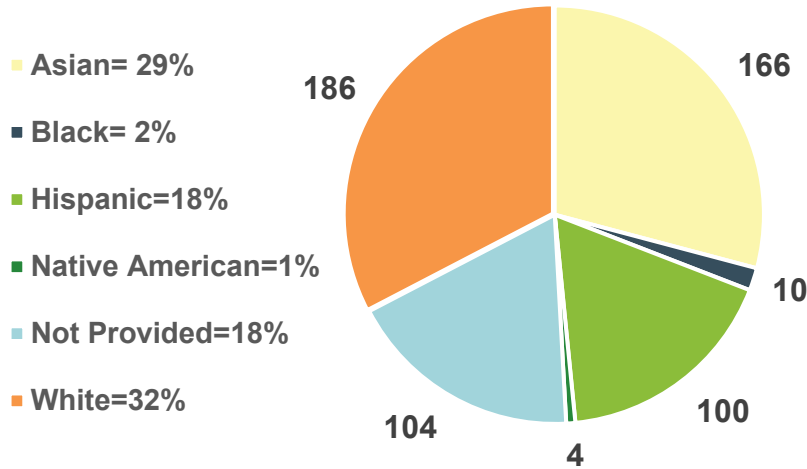
Outreach & Social Media



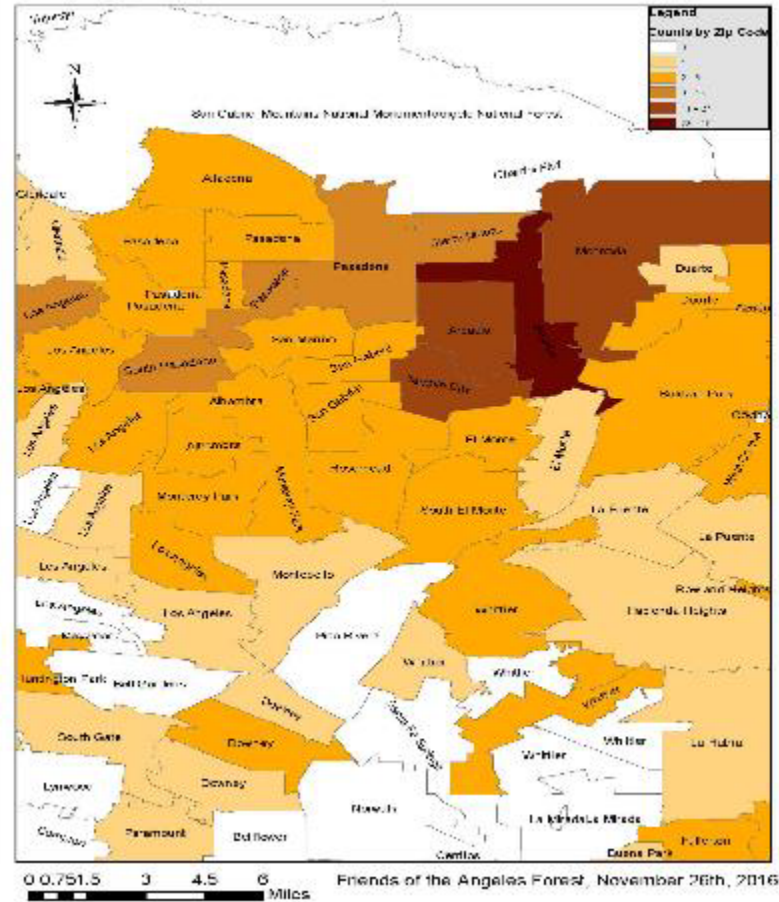


Total Riders by Ethnicity

Riders by Ethnicity



Chantry Flat Shuttle Pilot Users By Zip Code





Access to Parks - COVID era? Needed now more than ever

➤ In LA County:

- Tremendous public demand for the outdoors
- Revealing stark disparities in nature access
- Political will & funding aligning to act
- Desire for multi-benefit, innovative solutions

➤ LA is park-poor: Half of LA County lives in "park-poor" areas. Negative impacts:

- **Environmental justice:** 82% communities of color
- **Poor public health:** Childhood obesity, diabetes, air pollution, asthma
- **Nature deficit:** Losing next generation of environmental stewards

➤ Lack of transportation is #1/#2 barrier to L.A. outdoor access

➤ Need sustainable vehicle reduction: 4 million forest visitors

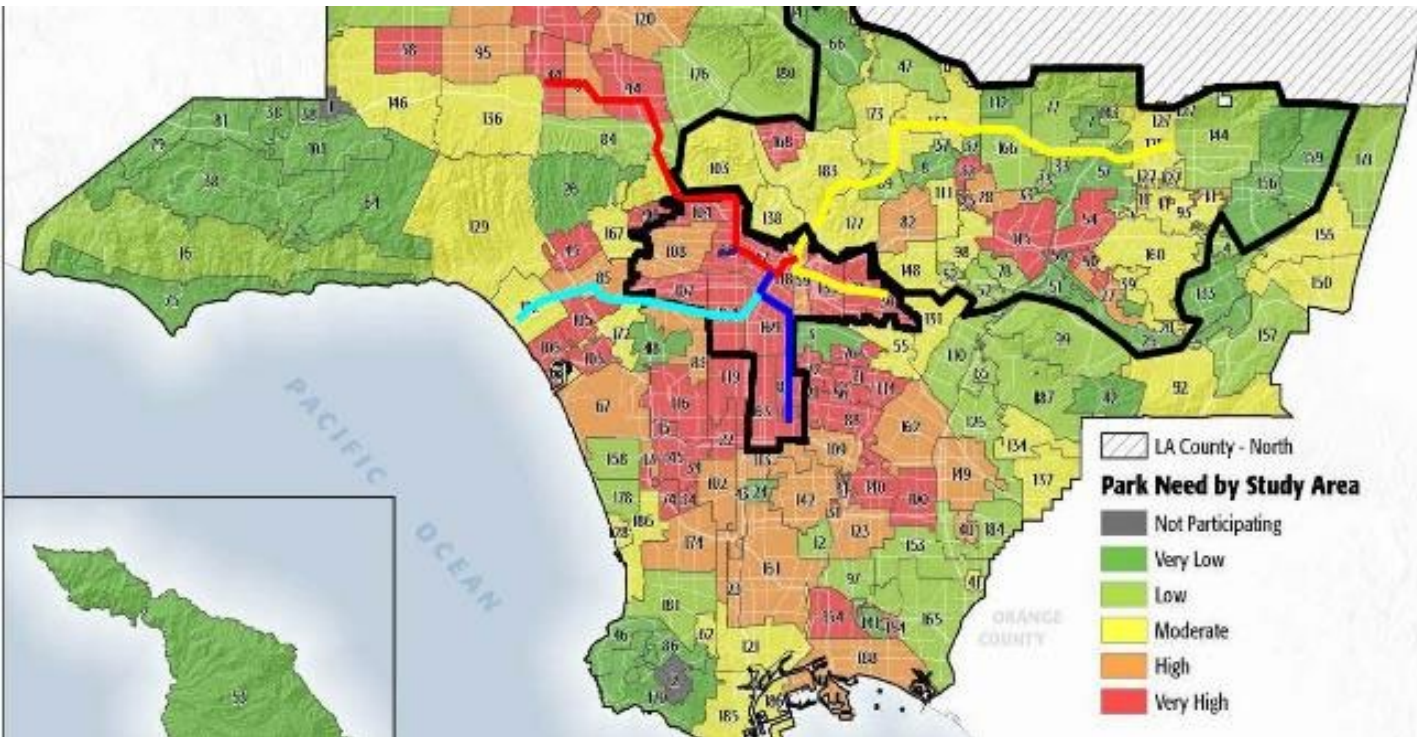




*Angeles National Forest
San Gabriel Mountains National Monument*

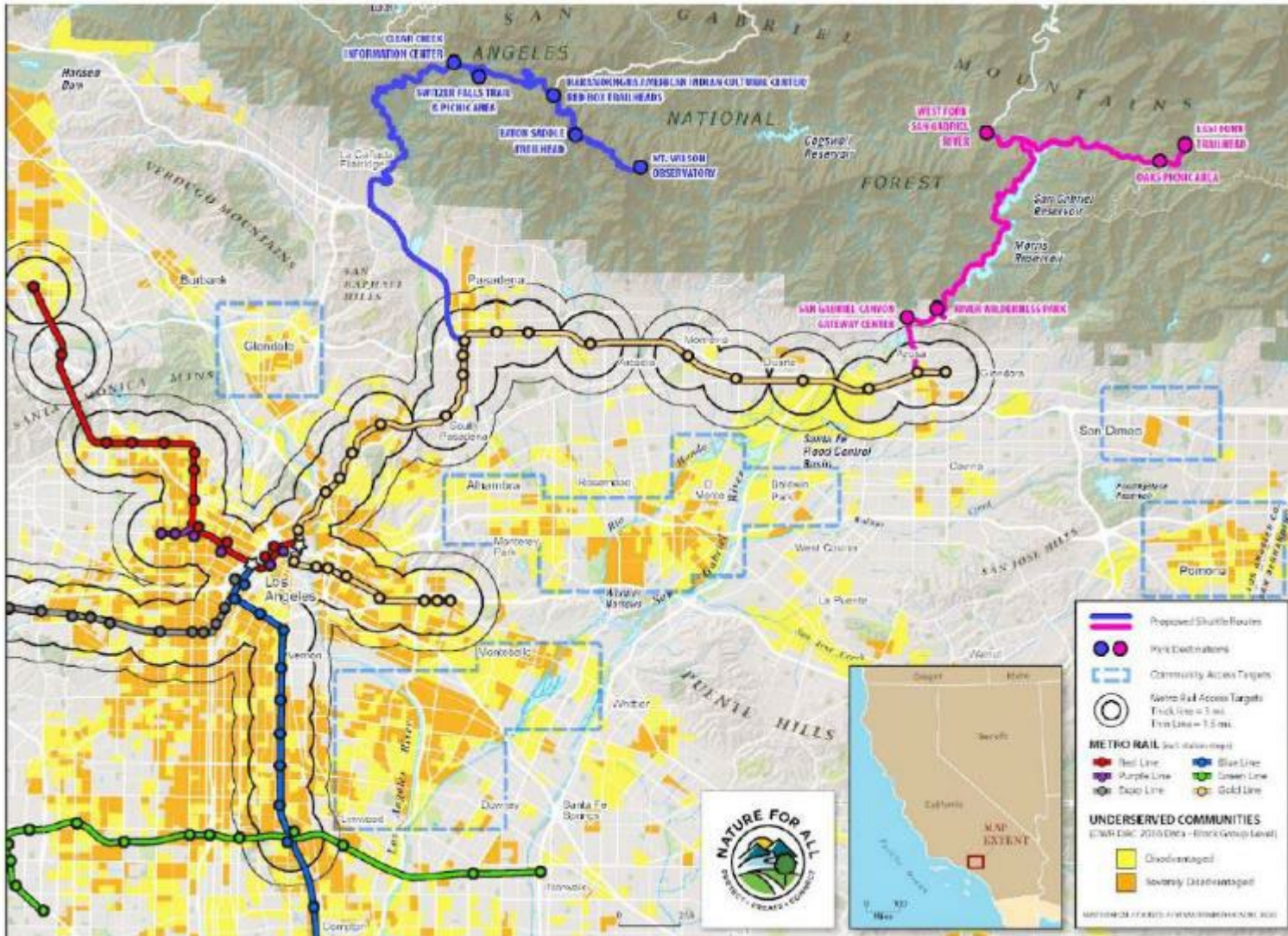
The Opportunity: San Gabriel Mountains

- **Connect diverse families** to the Forest & National Monument
- **70%** of LA County's open space
- **1 in 20 Americans:** 17 million people within a 90-min. drive
- **Transit-to-Trails:** Connect the gap-public transit & public lands
- **Multi-benefits:** Climate action, improve air quality & congestion, support local business districts, grow eco-tourism
- Tremendous public demand for the outdoors in LA County & congressional interest in addressing disparities in accessing nature





Grant Application for Prop 68 – Phase IIa





Proposed Routes – Mt Wilson Express



- Total Distance from Memorial Park Station to Mt. Wilson Observatory: Approximately 25 miles

- Includes a total of 11 stops:

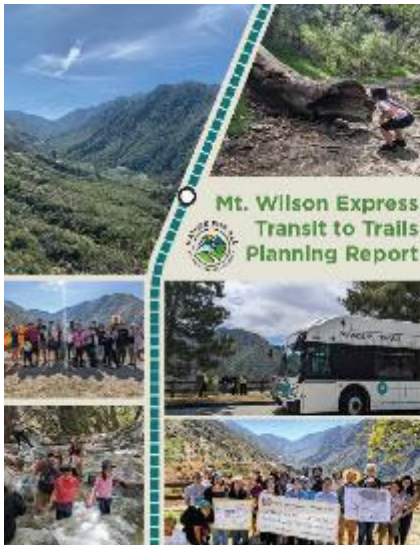
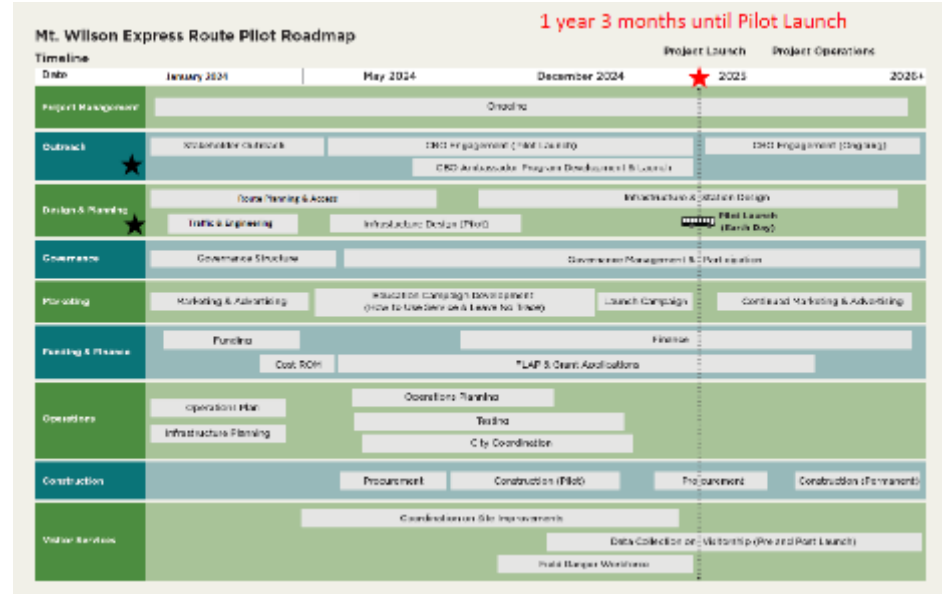
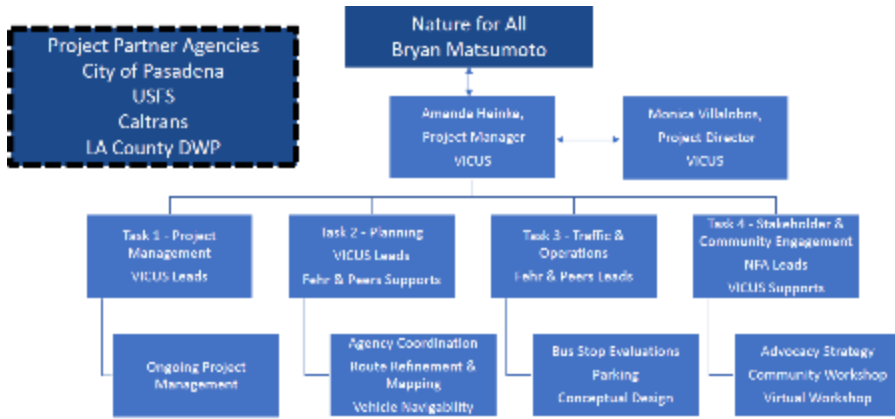
1. Memorial Park Station
2. Robinson Park *
3. La Pintoresca Park *
4. Hahamongna Watershed Park
5. Gould Mesa Trailhead
6. Clear Creek
7. Switzer Picnic Area
8. Colby Canyon
9. Haramokngna American Indian Cultural Center/ Red Box
10. Eaton Saddle Trailhead
11. Mt. Wilson Observatory

* Route from Memorial Park Station to Mt Wilson Observatory can possibly serve an EFC in Pasadena



Angeles National Forest San Gabriel Mountains National Monument

Proposed Routes – Mt Wilson Express



- Regional Transit Access & Equity Focus Commur
- Mt. Wilson Express Route Planning
- Operational Considerations
- Sustainable Visitor Management
- Community & Stakeholder Engagement
- Communications & Marketing
- Funding & Governance Opportunities





*Angeles National Forest
San Gabriel Mountains National
Monument*





Proposed Routes – Continued

Planning and Design for Shuttle Stop Infrastructure



Shuttle stop examples from Zion and Yosemite National Parks



Sample layout for Chantry Flat parking lot - proposed

Reconfigure parking lot to add:

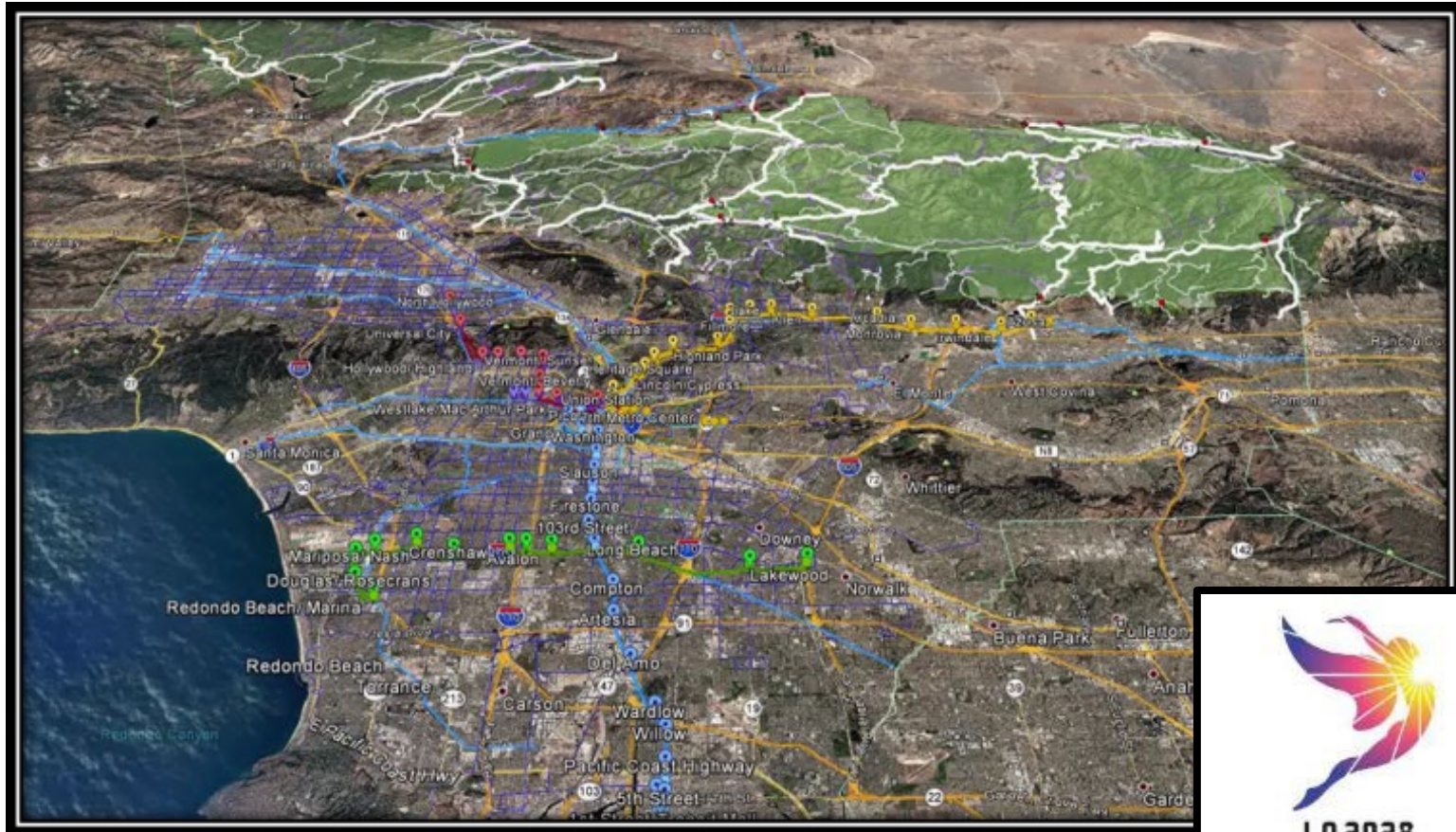
- Shuttle stop
- Shelter
- Seating
- ADA-ABA path
- Wayfinding & interpretive signage





*Angeles National Forest
San Gabriel Mountains National
Monument*

Transit Opportunities into the Future





Angeles National Forest San Gabriel Mountains National Monument

Future Opportunities



