

Enhancing a Partnership in the Wisconsin Lake Superior Basin

Managing By Network 2024 Case Study

Lacey Hill Kastern

Western Lake Superior Coastal Program Biologist

DOI - USFWS



Charting Our Course

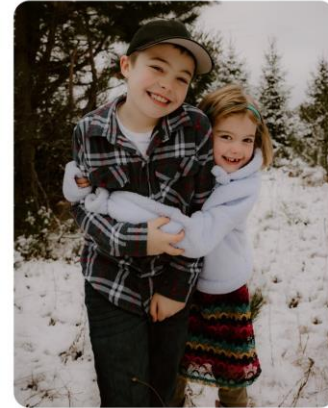
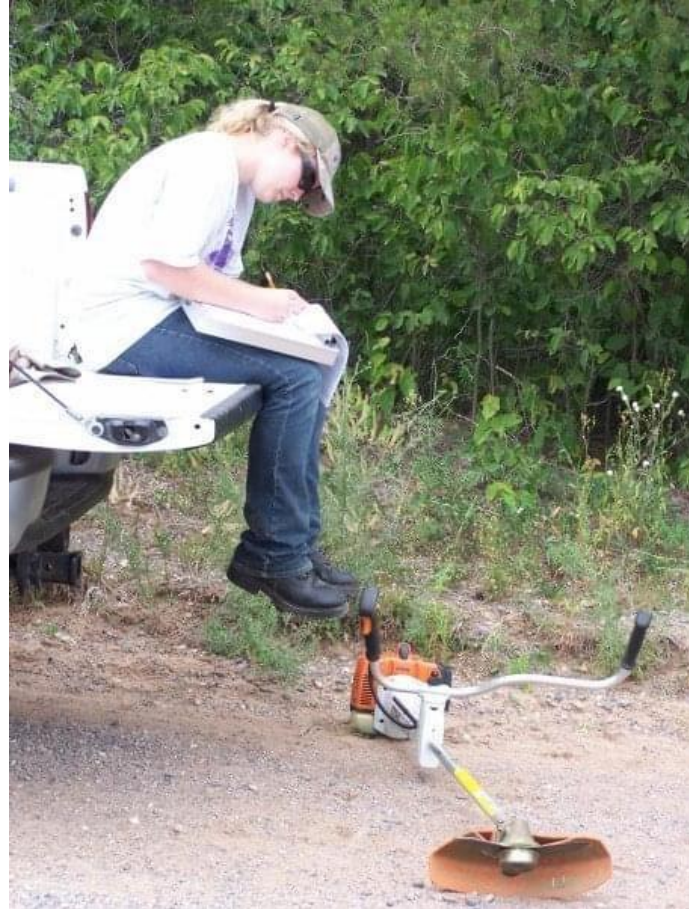
Who Am I?

Purpose & Goal today's presentation

Background and History of the Lake Superior Collaborative

The Headwaters to Coast Initiative

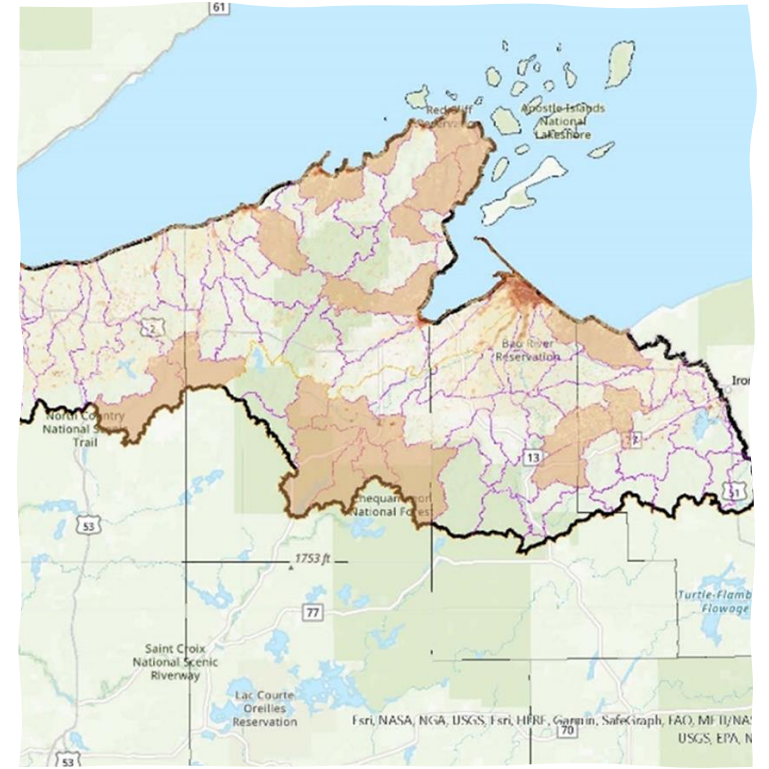
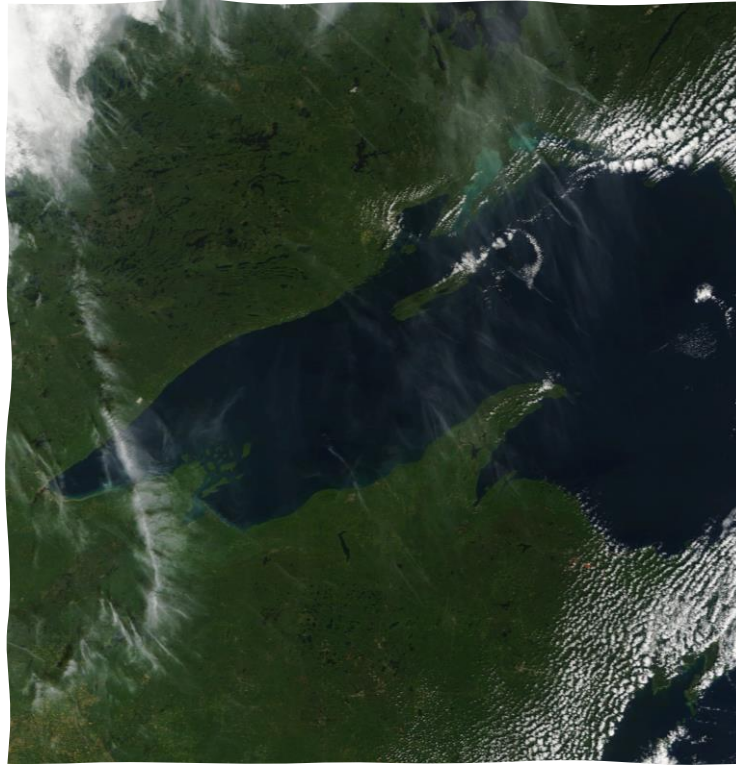
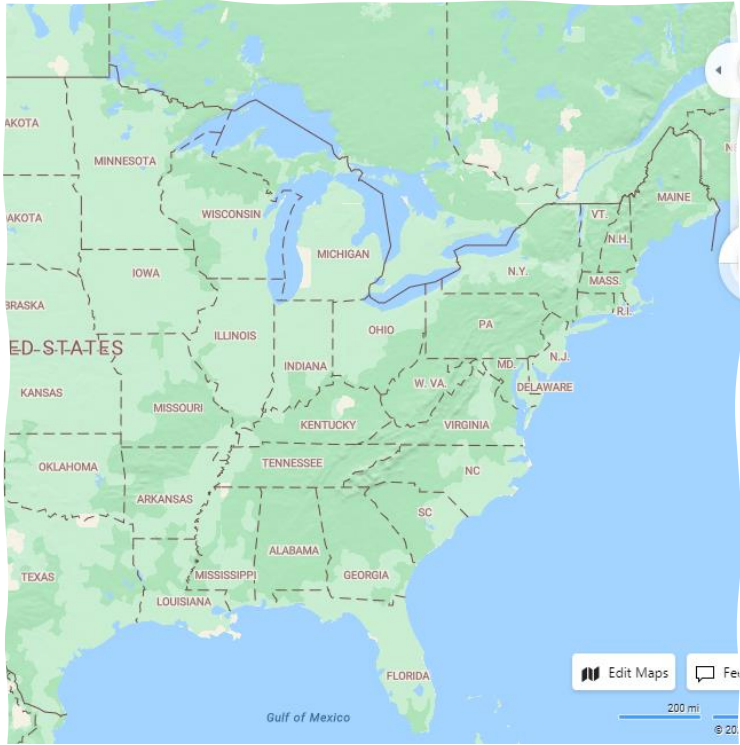
Next Steps



Purpose

- Share a Partnership Success Story
- Solicit feedback regarding a work-in-progress initiative





Where Are We?

Why? - US Hwy 2 and Fish Creek Blowout



Photo Credit Northland College

Sedimentation

Mouth of Fish Creek at Chequamegon Bay



Photo Credit Northland College

Who?



LAKE SUPERIOR COLLABORATIVE

NORTHLAND COLLEGE



Wisconsin Wetlands ASSOCIATION



USDA Natural Resources Conservation Service U.S. DEPARTMENT OF AGRICULTURE



Wisconsin's Lake Superior Basin Partnerships

Lake Superior Basin Partner Team (LSBPT)

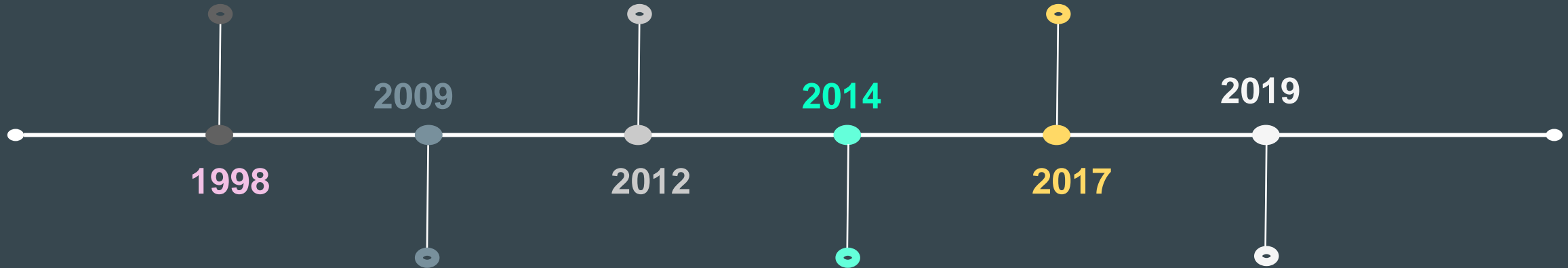
- Formed by Wisconsin DNR to advise state on carrying out the Lake Superior Binational Program.
- Kick-off of “slow the flow” watershed health initiative given unique challenges in the Basin red clay region.
- UW-Extension led coordination efforts.

LSBPT ends

- Coordinator from UWEX left position and not refilled.
- CBAP successful at acquiring grants.
- St Louis River AOC efforts brought partners together at that end of the Basin.

CBAP and LSLRP end

- Funding ended for both partnership efforts.
- UWEX took on coordination efforts to figure out next direction for Basin partnership in the absence of a funding driver.



1998

Chequamegon Bay Area Partnership (CBAP)

- Formed in response to Great Lakes Restoration Initiative.
- Partners came together to be more competitive for new funds rather than going it alone.
- Northland College led coordination and fiscal sponsorship.
- Sub-group of the LS Basin Partner Team

2009

2012

Lake Superior Landscape Restoration Partnership (LSLRP)

- Formed to implement Joint Chiefs Landscape Restoration funds over 3 years.
- Chiefs of US Forest Service and NRCS identified the Basin as an area of special attention.
- Not merged with CBAP, but co-existed with similar partner organizations.
- UWEX led LSLRP coordination efforts.

2014

2017

Lake Superior Collaborative (LSC)

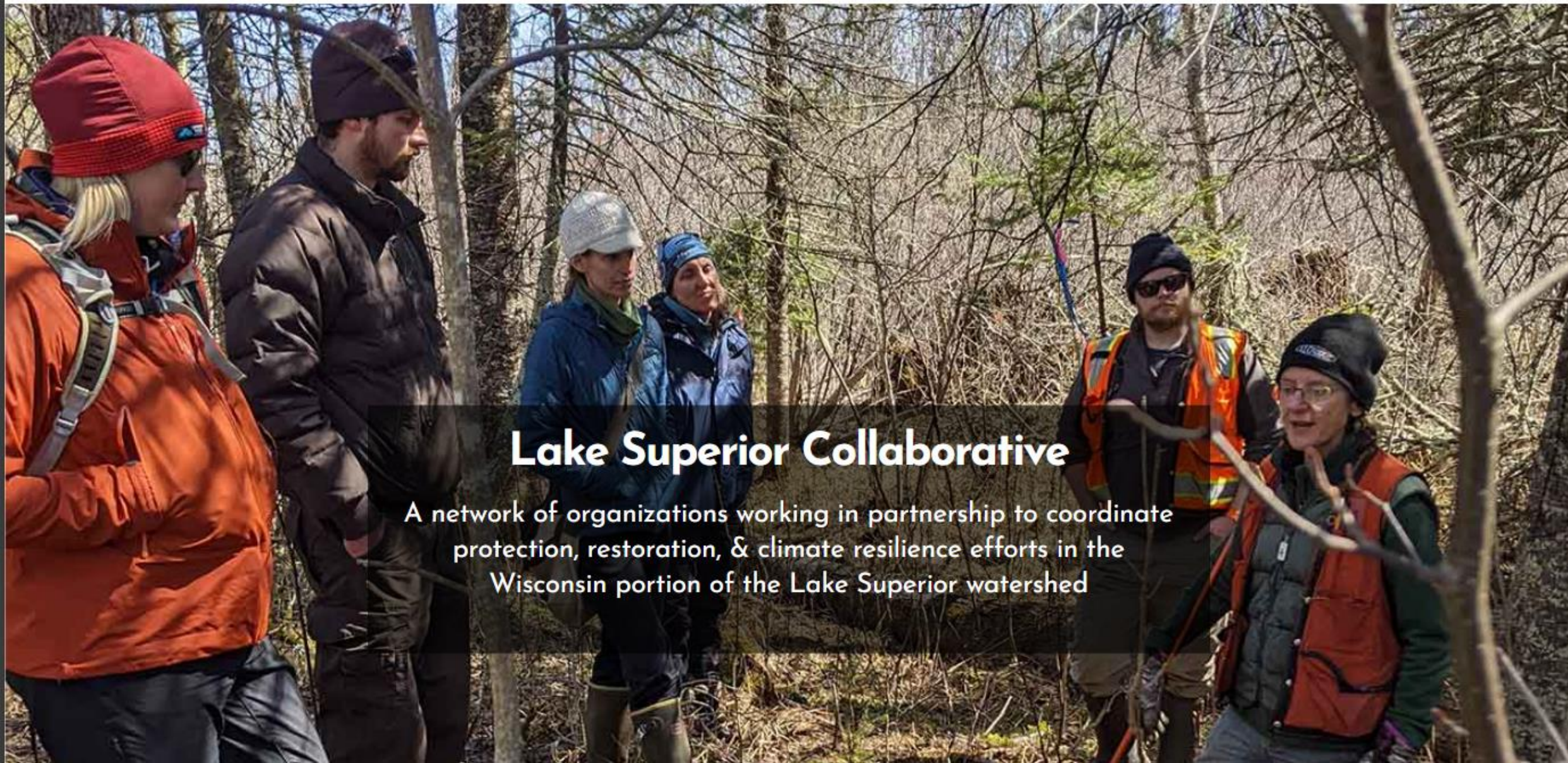
- Current iteration of a LS Basin partnership.
- Formed to facilitate partnership building to support:
 - 1) Information sharing
 - 2) Coordinated public outreach
 - 3) Training opportunities
 - 4) Collaborative projects and grants

2019



LAKE SUPERIOR COLLABORATIVE

- Evolution from the LSLRP and CBAP; Started officially in 2019
- Intent to continue collaboration, networking, & knowledge-sharing that was provided by prior regional partnerships
- Home partnership for *collaborative* initiatives, projects, programs, etc. so the infrastructure wouldn't need to be created from scratch
- [Lake Superior Collaborative \(lakesuperiorcollaborative.org\)](https://lakesuperiorcollaborative.org)



Lake Superior Collaborative

A network of organizations working in partnership to coordinate protection, restoration, & climate resilience efforts in the Wisconsin portion of the Lake Superior watershed

Check In

Wisconsin Lake Superior Basin

A vertical flowchart with four rectangular boxes of decreasing width and increasing indentation from top to bottom. The boxes are connected by downward-pointing arrows. The colors of the boxes are orange, reddish-brown, dark brown, and grey.

Drastic impacts to the region due to extreme weather events in the last decade

Long-term partnership that has ebbed and flowed for 25+ years

Now the what...

Let's Talk Planning...

- Have you heard of a Landscape Conservation Design?
- Are you a part of developing one? Please indicate the name and location in the chat.



**Recommended Practices for
Landscape Conservation Design**

Version 1.0, September 2018



Landscape Conservation Design Practices

1: Initiating
Landscape
Conservation
Design

2: Convene
Partners and
Frame the
Landscape
Conservation
Design

3: Assess
Current and
Future Desired
Conditions

4: Spatial
Design

5: Strategy
Design

[Recommended Practices for Landscape Conservation Design | Landscape Conservation Cooperative Network \(lccnetwork.org\)](https://www.lccnetwork.org/)



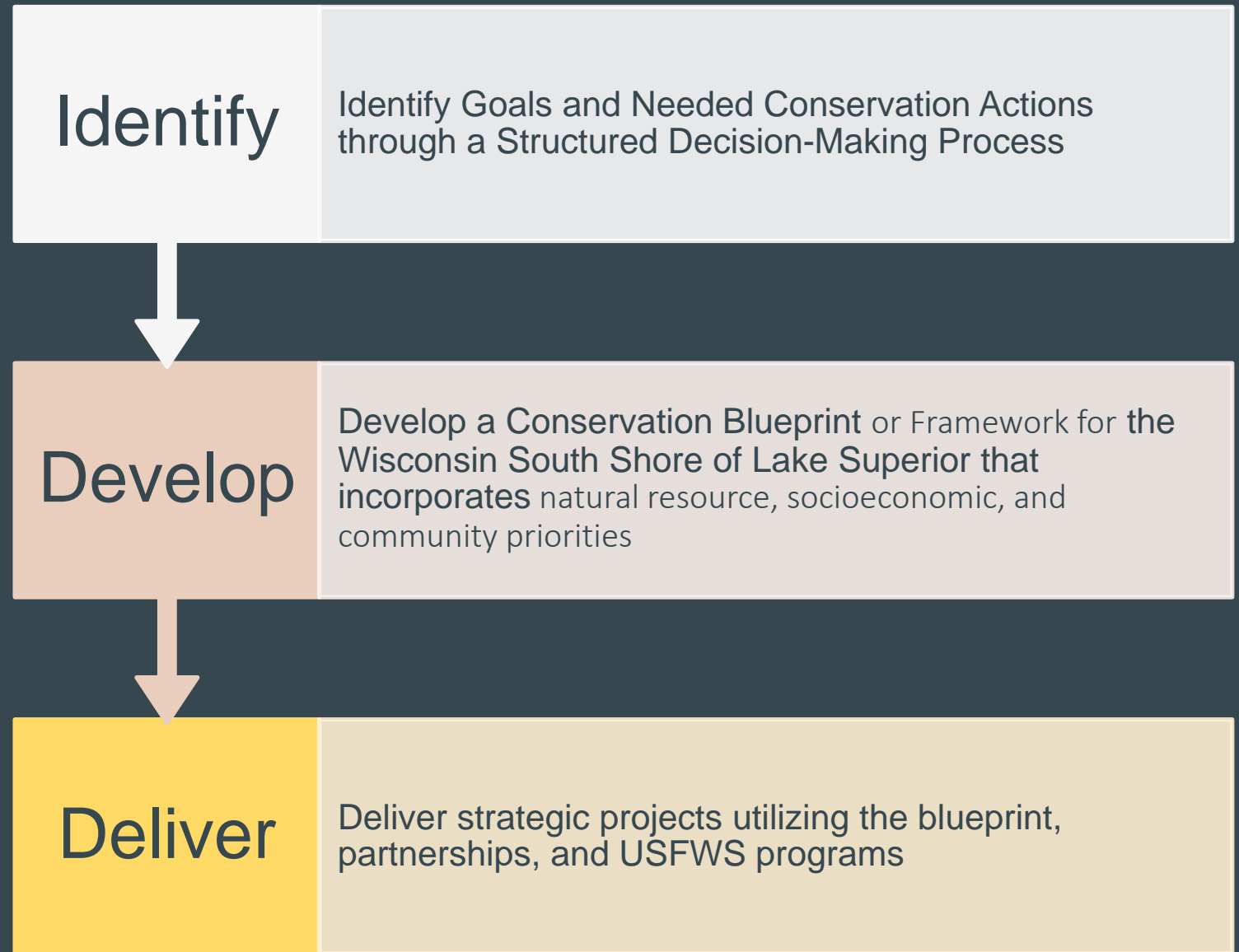
Headwaters-to-Coast (H2C) Initiative

A blueprint for continued collaborative conservation success in the Wisconsin, Lake Superior Basin



H₂C =

A collaborative approach to capturing priorities and delivering strategic projects



Bring the Partners Together

- Started with many individual conversations with ~150 contacts
- May 2023 Virtual Priority Setting Meeting – 49 participants from 23 organizations
- June 2023 Priority Setting Meeting – 44 participants from 13 organizations
- 4-day LSC Symposium featuring H2C with 78 participants from 30 different agencies
- Monthly LSC meetings
- Twice monthly Core Team Planning meetings



Conservation Priorities

Habitat Connectivity
and Functionality

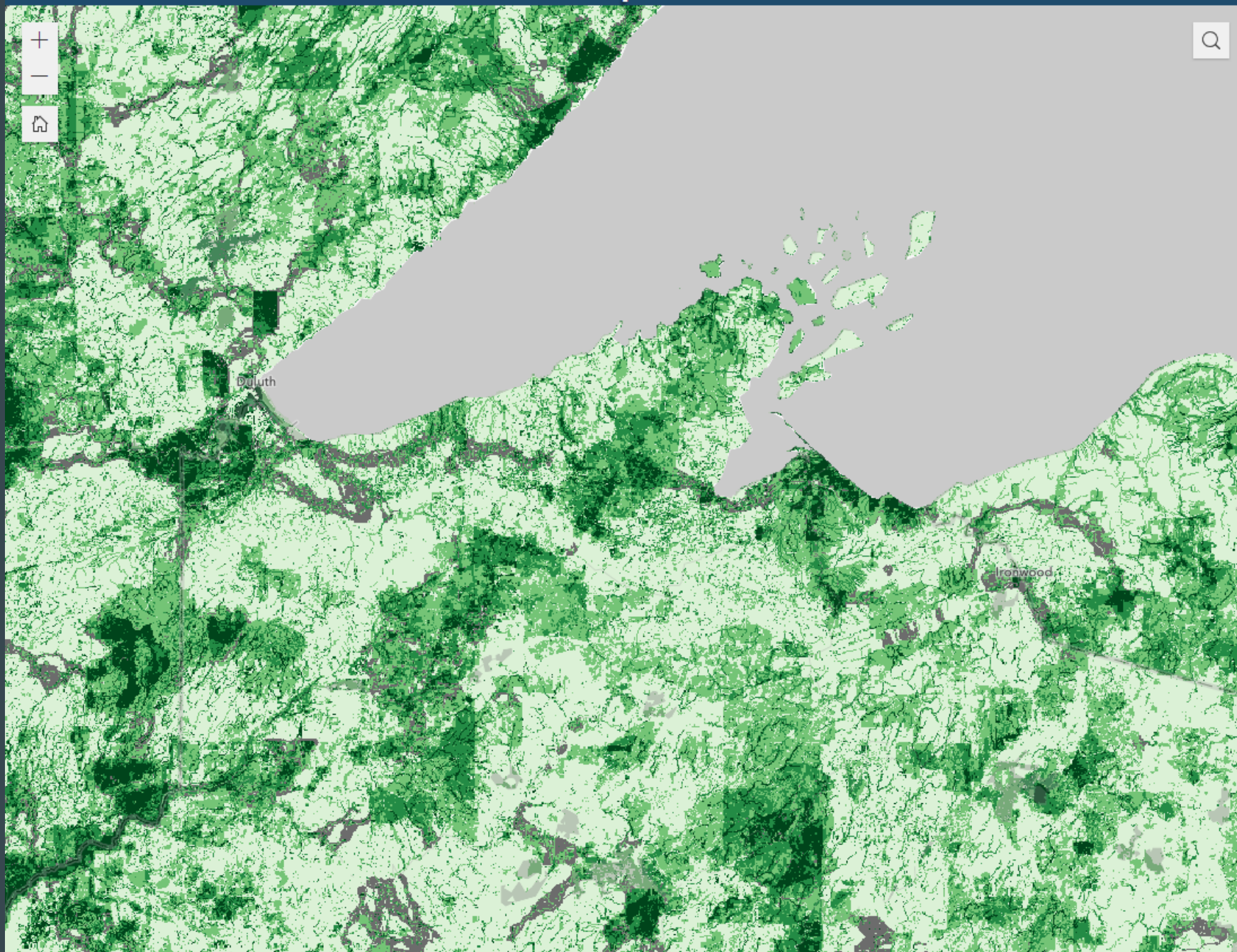
Healthy Habitats and
Biodiversity

Water Quality and
Hydrologic Integrity






Climate Resiliency

Inclusive Community
Engagement
Including Rural and
Tribal Communities

Address and Prepare
for Current and
Emerging Threats

[Legend](#)[Map Layers](#)[Change the Basemap](#)

Midwest Conservation Blueprint

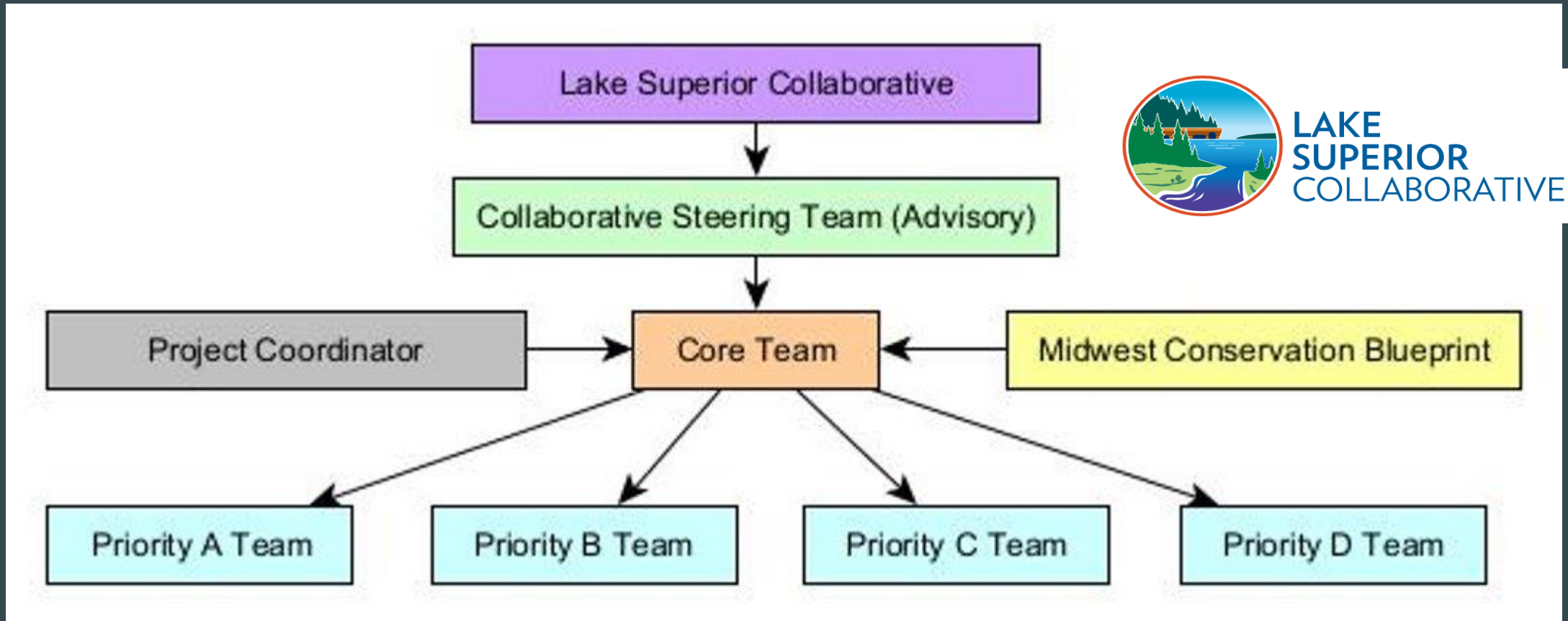
-  Priority for Conservation
-  Medium Conservation Priority
-  High Conservation Priority
-  Highest Conservation Priority
-  Important for Connectivity



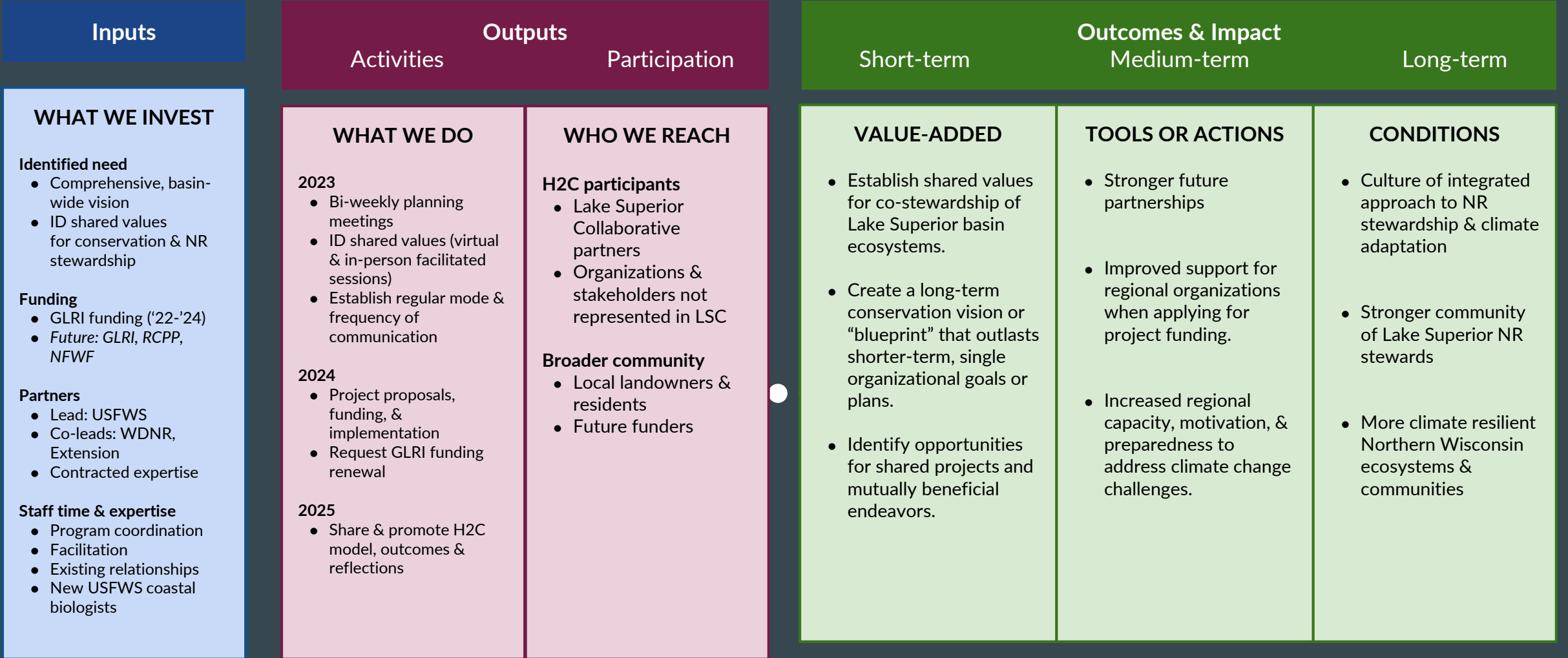
Add your data to the map! Note: Shapefiles must be uploaded in a single zipped folder and cannot exceed 2MB.

[+ Click to add data](#)

H2C Organizational Structure



Goal: Co-create a conservation & natural resource stewardship blueprint for the Lake Superior basin of Wisconsin.



Assumptions: Participants will be engaged,

External factors: Funding availability, partner & staff capacity,



The Teams

Habitat Connectivity
and Functionality

- GLRI Terrestrial Habitat Connectivity Workgroup

Healthy Habitats and
Biodiversity

- Northwest Sands Habitat Team
- Brook Trout Team
- Coastal Wetland Resiliency

Address and Prepare
for Current and
Emerging Threats

- Northwoods Cooperative Weed Management Team

Climate Resiliency

- Climate Resiliency Team

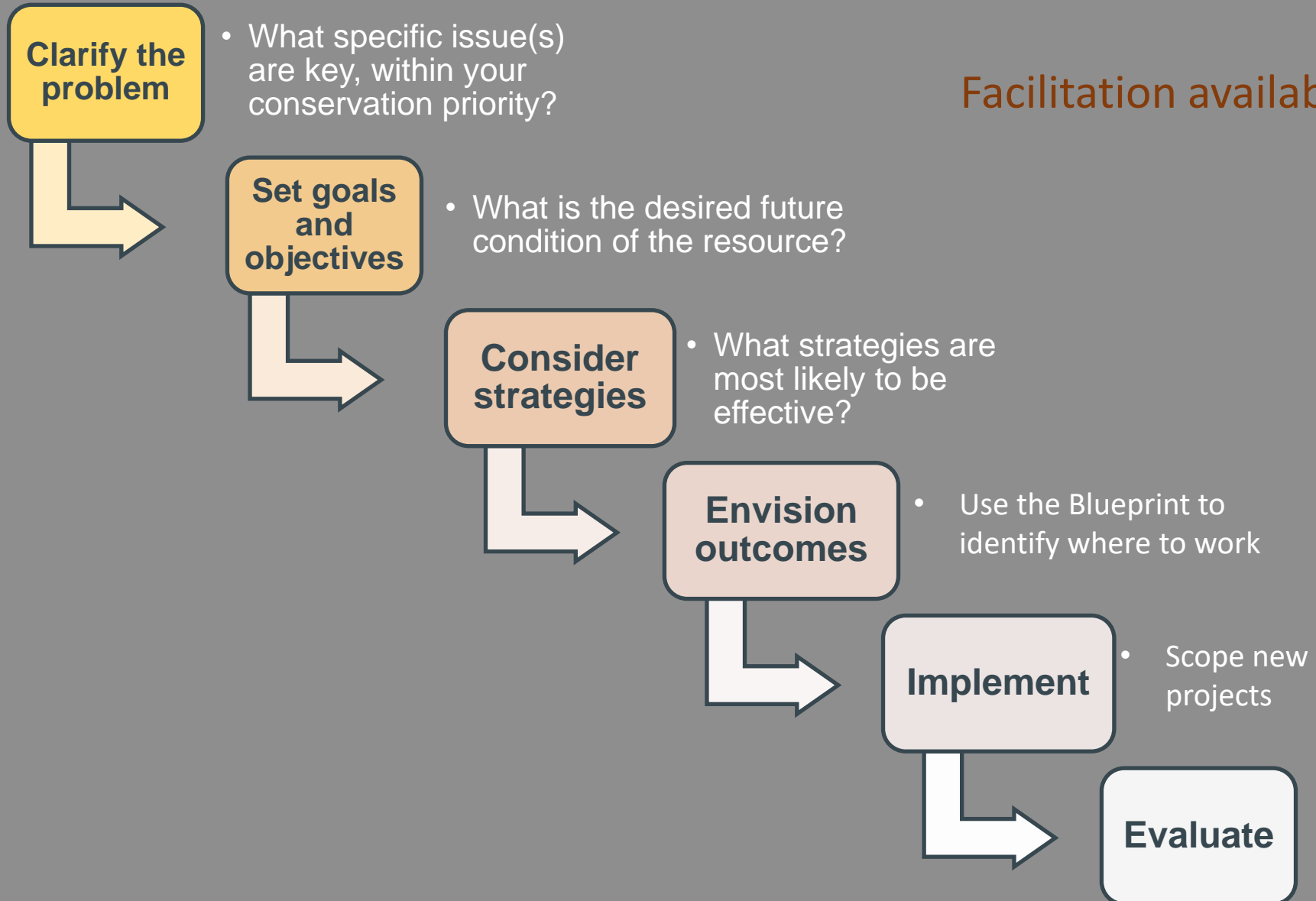
Inclusive Community
Engagement Including
Rural and Tribal
Communities

- Community Engagement Team

Water Quality and
Hydrologic Integrity

- Slow the Flow Workgroup
- Slow the Flow Forestry Workgroup
- Near-shore Monitoring Workgroup

Steps for teams to work through



Timeline



Identify priorities

- May/June 2023
- Two workshops held
- General priorities identified

Convene teams

- February/March 2024
- Invite participants
- Begin!

Objectives and strategies

- March/April 2024
- Decide where to focus
- Set SMART objectives
- Identify and prioritize strategies

Prioritize projects

- April/May 2024
- Discuss and prioritize on-the-ground projects slated for 2025-2027
- Consider opportunities for collaborations across teams
- Prepare project ideas

Award funding

- June/July/August 2024
- Submit project ideas
- Project ideas ranked
- Funding allocated

Walk a Mile in their Shoes – Meaningful Inclusive Community Engagement Including Rural and Tribal Communities

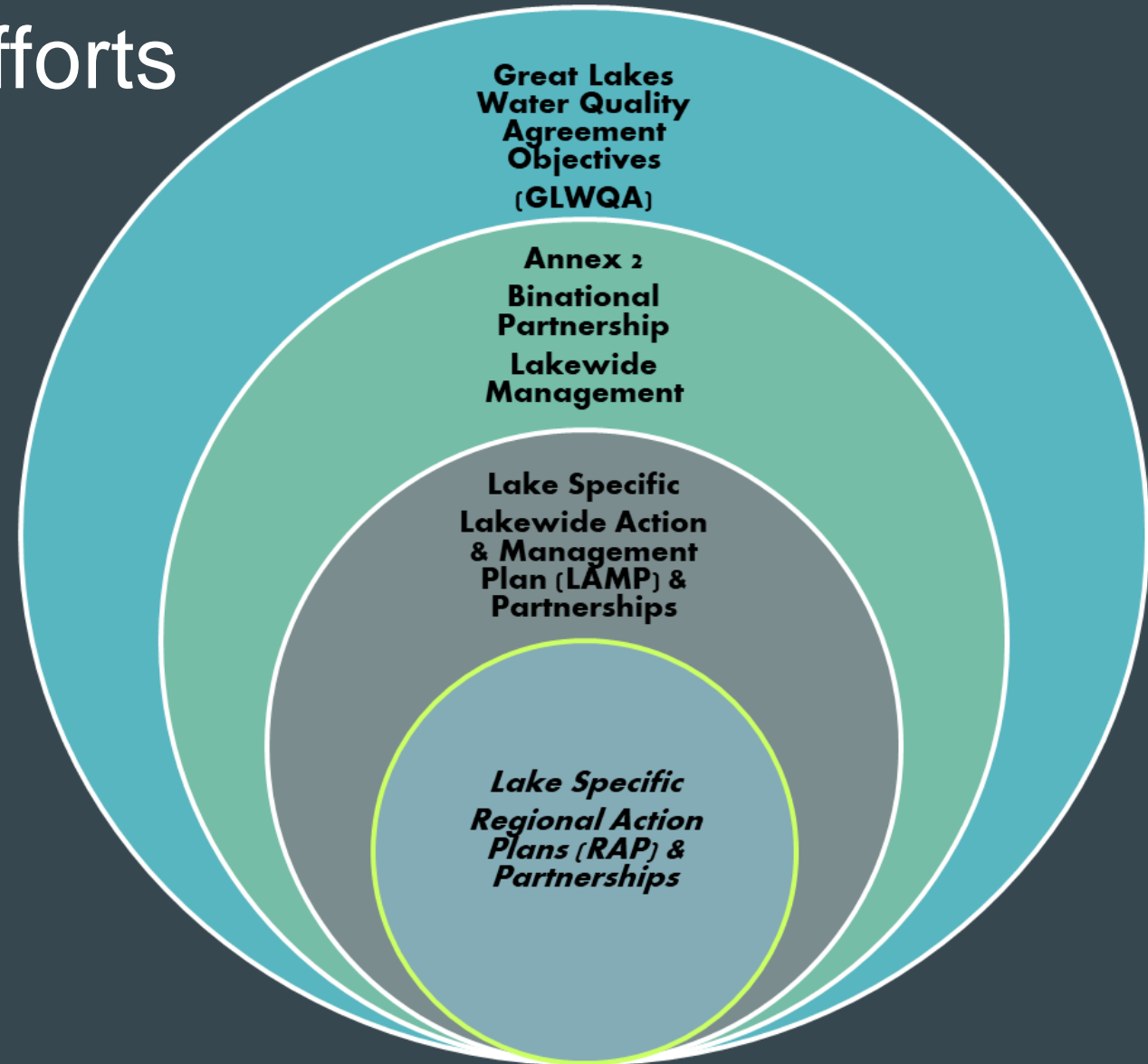
Ojibwe Treaty History: Treaties with the United States and “Chippewa”

- Treaties of 1836, 1837, 1842, 1854
- The Anishinaabe have reserved the rights to hunt, fish, and gather within the ceded territories
- They have also reserved “other usual privileges of occupancy”
 - Camping, access to state parks, docking
- Many cases have affirmed these rights:
 - People v. Jondreau (1971)
 - State of Wisconsin v. Gurnoe (1972)
 - LCO v. Voigt (1983)



Building from existing and Connecting to other efforts

Headwaters to Coast is a
Regional Action Plan
(RAP)



Discussion/Questions?

Lacey S. Hill Kastern
Western Lake Superior Coastal
Program Biologist
Certified Wildlife Biologist®
U.S. Fish and Wildlife Service
Ashland, WI
763-388-4924
lacey_hillkastern@fws.gov

