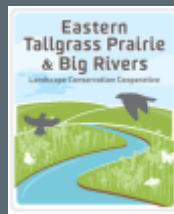
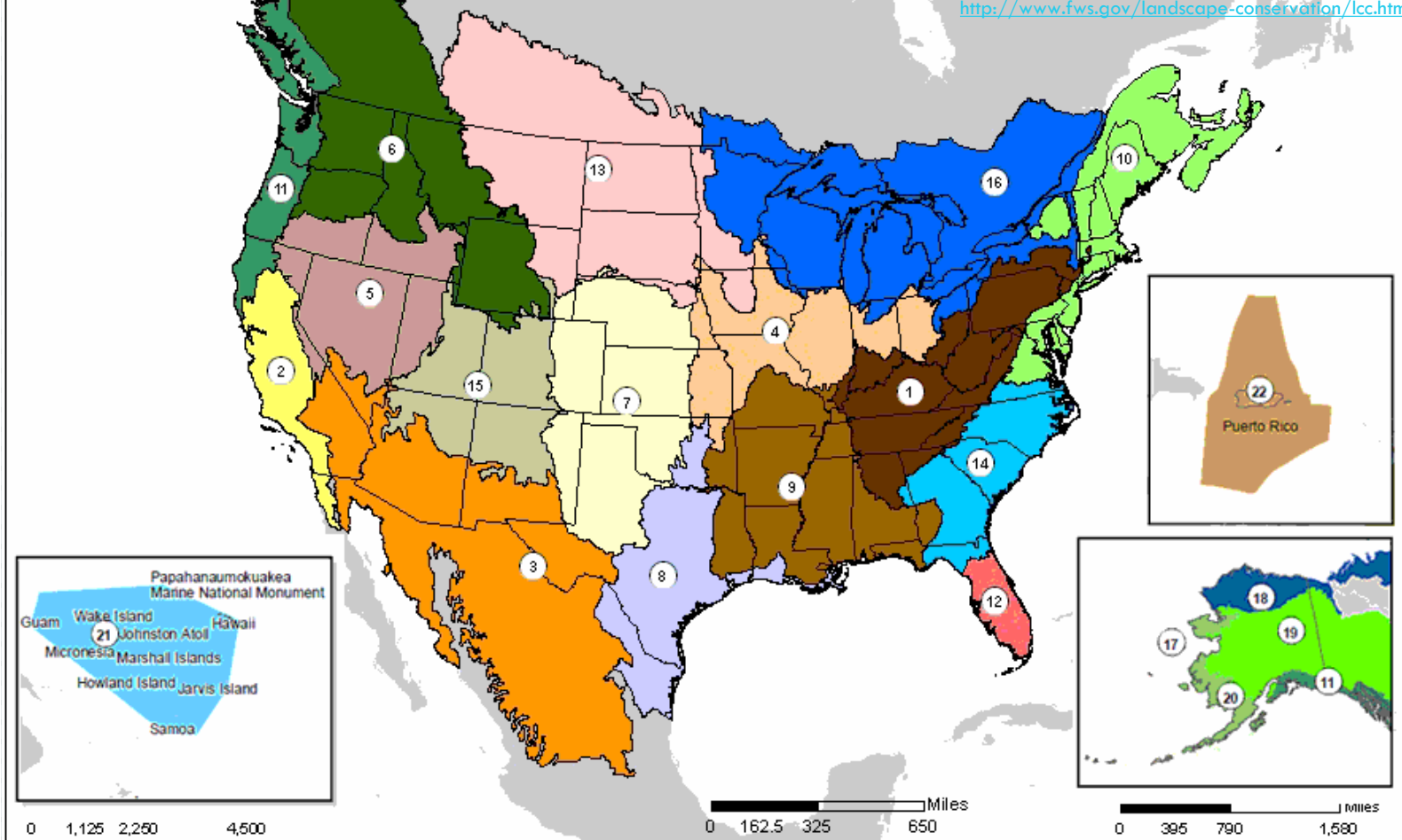


# LARGE LANDSCAPE AND URBAN CONSERVATION INITIATIVES: ECOLOGICAL PLACES IN CITIES (EPIC)

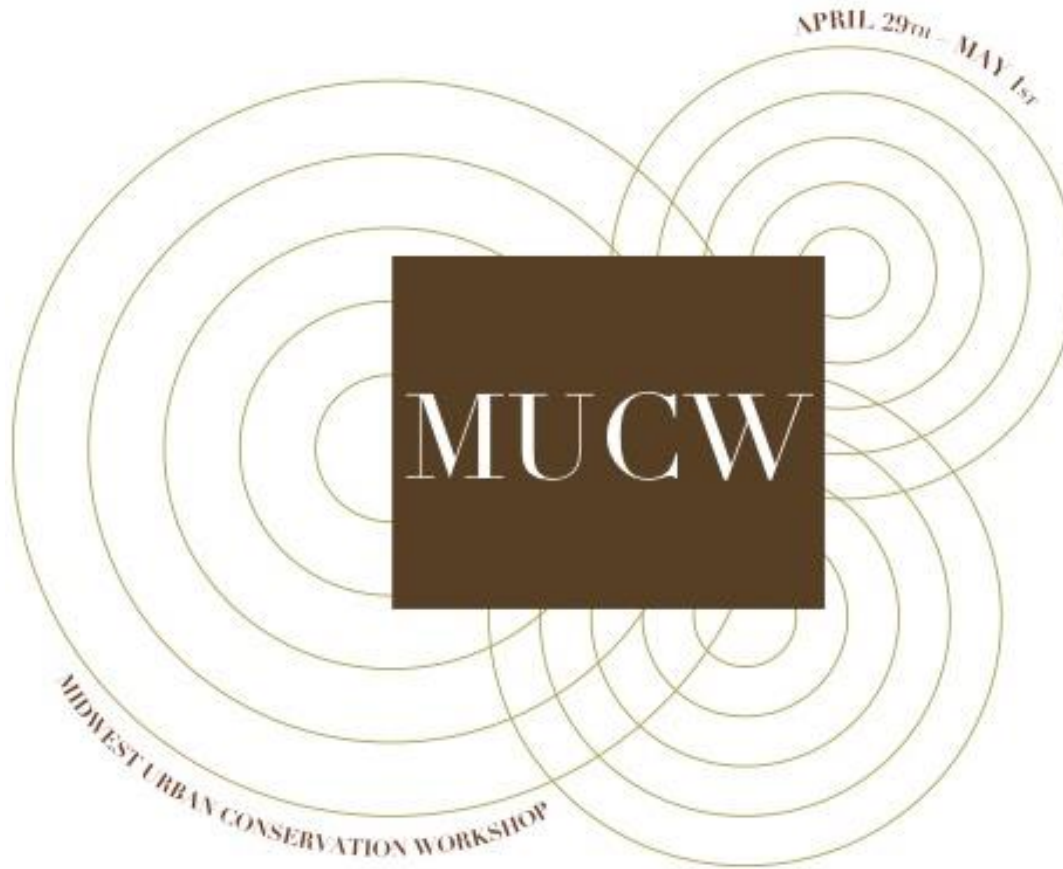


Kristin Shaw, EPIC Urban Conservation TAG  
Coordinator, ETPBR LCC, USFWS



## Landscape Conservation Cooperatives

- Applied conservation science partnerships:
  - Provide science and technical expertise needed to support conservation planning at landscape scales
  - Promote collaboration among members & create shared conservation goals



## The Midwest Urban Conservation Workshop

46 Participants...5 States (IA, IL, IN, MO, MN)...in St. Louis , MO... Take away: brainstormed how to create a larger urban conservation network, Ecological Places In Cities (EPIC).

# Collective Impact Framework

<b>Common Agenda</b>	All participants have a shared vision for change including a common understanding of the problem and a joint approach to solving it through agreed upon actions.
<b>Shared Measurement</b>	Collecting data and measuring results consistently across all participants ensures efforts remain aligned and participants hold each other accountable.
<b>Mutually Reinforcing Activities</b>	Participant activities must be differentiated while still being coordinated through a mutually reinforcing plan of action.
<b>Continuous Communication</b>	Consistent and open communication is needed across the many players to build trust, assure mutual objectives, and create common motivation.
<b>Backbone Support</b>	Creating and managing collective impact requires a separate organization(s) with staff and a specific set of skills to serve as the backbone for the entire initiative and coordinate participating organizations and agencies.

For more information on Collective Impact:

[http://www.ssireview.org/articles/entry/collective\\_impact](http://www.ssireview.org/articles/entry/collective_impact)





# Functions of EPIC

- Education and train the trainer
- Wildlife conservation
- Habitat restoration
- Community revitalization
- Landscape planning
- Research





<http://www.mymodernmet.com/profiles/blogs/mammal-society-photographer-of-the-year>



[https://news.abc.co.uk/media/images/40/435000.jpg?\\_40951062\\_wat-fisher.jpg](https://news.abc.co.uk/media/images/40/435000.jpg?_40951062_wat-fisher.jpg)

## Ecological Places in Cities

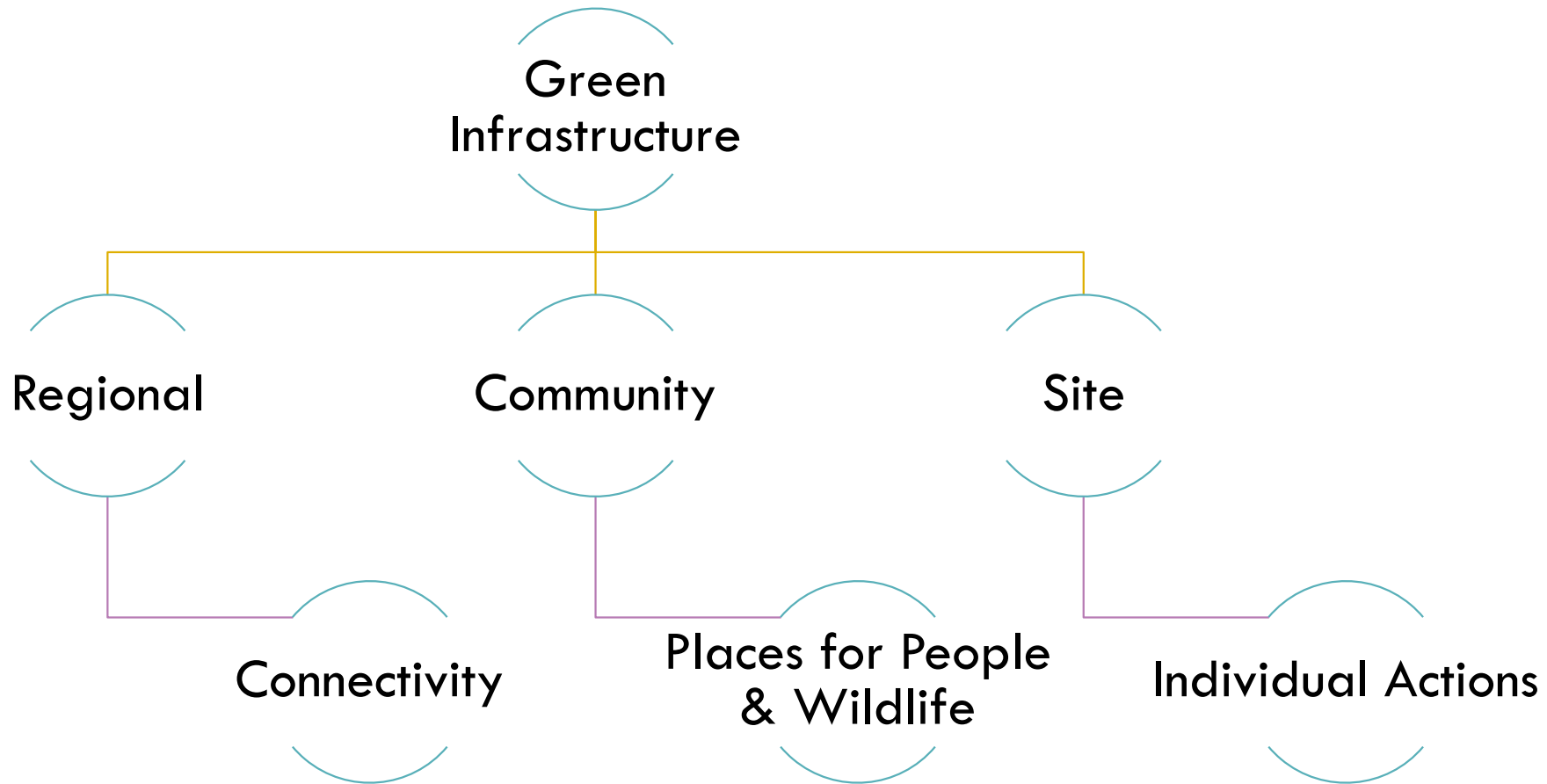
**Vision:** An interconnected network of cities and landscapes where people live in harmony with nature.

**Mission:** Provide people living in cities with resources to harmonize people, wildlife, natural and working landscapes and to cultivate the love of life and living systems.

# EPIC -- Goals

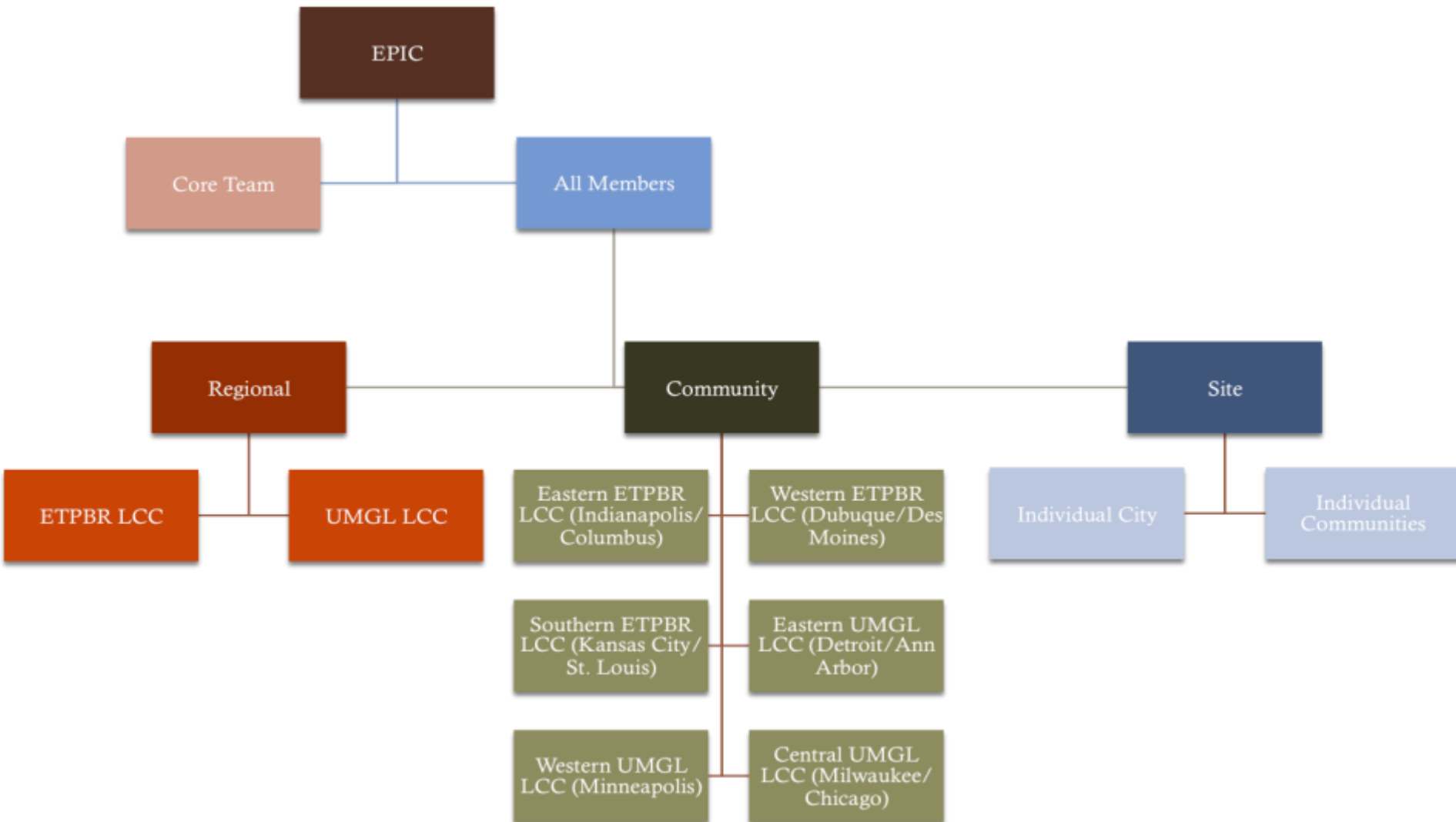
- **GOALS** \*Corresponding functional group is included at the end of the goal in (*Group*).
  1. Revitalize communities through reconnecting people with nature in urban areas (*Community Revitalization*).
  2. Champion wildlife conservation and habitat restoration to establish ecologically resilient urban communities within their larger landscapes (*Wildlife Conservation, Habitat Conservation, Landscape Planning*).
  3. Showcase how conservation and restoration promote thriving green economies and community health and cohesion (*Wildlife Conservation, Habitat Conservation, Community Revitalization*).
  4. Expand educational and professional development opportunities for those interested in urban conservation (*Education and Train the Trainer*).
  5. Facilitate conversations on the latest scientific research and practices related to the role and importance of ecological places in cities (*Research*).

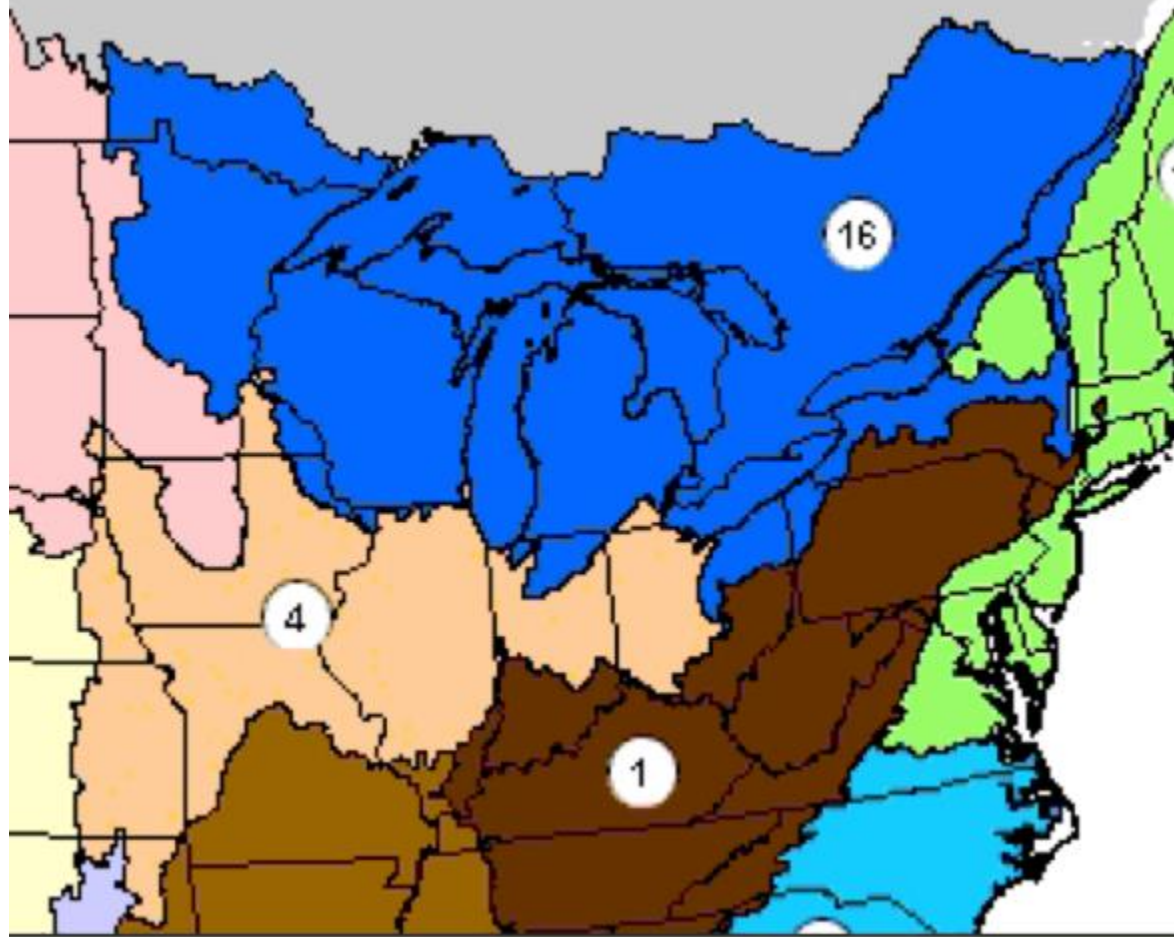
# Green Infrastructure - Theme





# Geographic Perspective





## Regional – Connectivity

14 states, 2 Countries – 250,000 feet approach to urban conservation and connecting the dots



## Community – Places for People and Wildlife

Cities within the United States- Chicago, IL; Detroit, MI; Minneapolis-St. Paul, MN; St. Louis, MO; Cincinnati, OH; Cleveland-Elyria, OH; Kansas City, MO/KS; Columbus, OH; Indianapolis-Carmel-Anderson, IN; Milwaukee-Waukesha-West Allis, WI; Louisville, KY; Buffalo, NY

Cities within Canada- Toronto, Ontario; Montreal, Quebec; Ottawa-Gatineau, Ontario/Quebec; Quebec, Quebec



## Site – Individual Action



# EPIC Monarch LCD Project

- LCD framework that any city can pick up and use to create a Monarch's View of their city at all scales
- Three total LCDs will be completed for Chicago, IL and 2 other cities (TBD)
- \$150,000 in on the ground Monarch Conservation Projects
- Urban Monarch Conservation Workshop - Fall 2016

Scale	Area	Main stakeholder group(s)
1. Backyards	0.01 acres	homeowners
2. Underutilized spaces, vacant lots, community gardens	0.1 acres	neighborhood organizations
3. Schoolyard	~1.0 acre	school boards
4. Public park or private corporate property	~10 acres	city department staff, corporations, faith-based organizations, golf courses etc.
5. Intra-city corridor	~100 acres	urban planners, mayors, city councils
6. Multi-city pathway	~100,000 acres (central flyway)	regional, state or federal planners and program managers



# Lessons Learned

- *Things move a lot slower than I thought they would*
- *Passionate people are key to success*
- *The biggest challenge so far— Geography and Messaging*
- *Challenges for upcoming year – LCC Funding, Unknowns and Communication*
- *Ties to Managing by Network – Network life cycle*





Photo: [http://people.umass.edu/terrel/urban\\_conference.html](http://people.umass.edu/terrel/urban_conference.html)

## QUESTIONS?

### **Interested in being a part of EPIC?**

Contact Kristin Shaw, EPIC Urban Conservation Coordinator ETPBR LCC

Email: [Kristin\\_Shaw@fws.gov](mailto:Kristin_Shaw@fws.gov)

812-334-4261 x1209 (o)

812-340-2759 (c)

**More Information about what the FWS is doing for Monarch Conservation:**

<http://www.fws.gov/savethemonarch/>